

No.H-39011/23/2024-Log.cell (C.No.-236807)  
Government of India  
Ministry of Road Transport & Highways  
(Logistics Section)  
Transport Bhawan, 1, Parliament Street New Delhi-110001

Dated, the 30<sup>th</sup> April, 2024

OFFICE MEMORANDUM

Subject: Mapping of jurisdiction of all PIUs/NH divisions/ROs of State PWD, MoRTH PIUs, NHAI, NHIDCL and BRO.

Ministry is in the process of mapping of jurisdiction of all PIUs/NH divisions of MoRTH, NHAI, NHIDCL and BRO on National Highways network map. In this regard, a dashboard has been prepared with link as under.

2. The detailed procedure to login and other follow up steps is enclosed herewith as Annexure. After login in the dashboard with the registered NH number may be selected in their dashboard and thereafter start point, end point and intermediate point may be marked either on the map shown on the dashboard or entering the current location or filling the latitude/longitude manually in the dashboard. Upon filling in the dashboard the data may be saved and validated.

3. All Project Directors/Executive Engineers of NH Division of MoRT&H, NHAI, NHIDCL & BRO are requested to complete this exercise by 10<sup>th</sup> May, 2024 positively. All ROs are requested to ensure this compliance by their PDs/Executive Engineers and respective ROs to validate the same by 15<sup>th</sup> May, 2024.

4. Furthermore, for any clarification in the matter, the following officials may kindly be contacted:-

- Shri Bhupender Singh (Director), MoRT&H, New Delhi ([bhupendar.ds@gov.in](mailto:bhupendar.ds@gov.in)) (Mobile No.8700678772)
- Shri Rohin Kumar Gupta (SE), MoRT&H, New Delhi ([rohin.kg@nic.in](mailto:rohin.kg@nic.in)) (Mobile No.9868374414)
- Shri Mansoorul Haque(CTO), MoRT&H ([mansoor@nic.in](mailto:mansoor@nic.in)) (Mobile No.9891978661)
- Shri Manish Sharma (CTO), Media Team ([manish.sharma@kanalytics.in](mailto:manish.sharma@kanalytics.in))(MobileNo. 9322456710,8527672097)

5. The Link as mentioned above is reproduced as below:-  
[https://media.morth.gov.in/morth\\_srs/login.php](https://media.morth.gov.in/morth_srs/login.php)

6. Please treat this matter on top priority as Secretary himself is personally monitoring and reviewing the same.

This is issued with the approval of Competent Authority.

Encl: As above

To


- All Regional Officers MoRTH/NHAI/NHIDCL
- All Project Directors/Executive Engineers of state government, BRO, MoRT&H, NHAI and NHIDCL.

Copy for information and necessary action to:

- All Pr. Secretaries / Secretaries PWD
- DG, BRO, New Delhi
- Chairman, NHAI
- MD NHIDCL
- All Project Zone Chief Engineers

Copy for information to:

- PSO to Secretary (RT&H)
- Sr. PPS to DG(RD)&SS, MoRT&H
- Sr. PPS to ADG (Monitoring), MoRT&H
- PPS to JS (Media), MoRT&H
- NIC- for uploading on Ministry's website under "what's new' Portal.

  
(Bhupender Singh)  
Director (Logistics/Media)



सड़क परिवहन और राजमार्ग मंत्रालय  
**MINISTRY OF ROAD TRANSPORT & HIGHWAYS**  
भारत सरकार Government of India

**Standard Operating Procedure (SOP)**  
**for**  
**RO / PIU Jurisdiction Data Collection**

## **Objective of SOP for GIS based Data Collection for National Highways**

The objective of this Standard Operating Procedure (SOP) is to streamline and facilitate the GIS based data collection process for all National Highways in India under the Ministry of Road Transport & Highways. The SOP aims to achieve the following goals:

**Define Responsibility Areas:** Clearly define the responsibility areas for each National Highway.

**Utilize GIS Mapping:** Utilize a GIS-based mapping system through the Media portal for defining networks and data visualization.

**Verify Data Accuracy:** Implement a verification process by the admin team to ensure data accuracy and reliability.

**Support Communication:** Use the collected data for various communication purposes related to the highway system.

**Enhance Transparency:** Improve transparency within the system by providing accurate and up-to-date information.

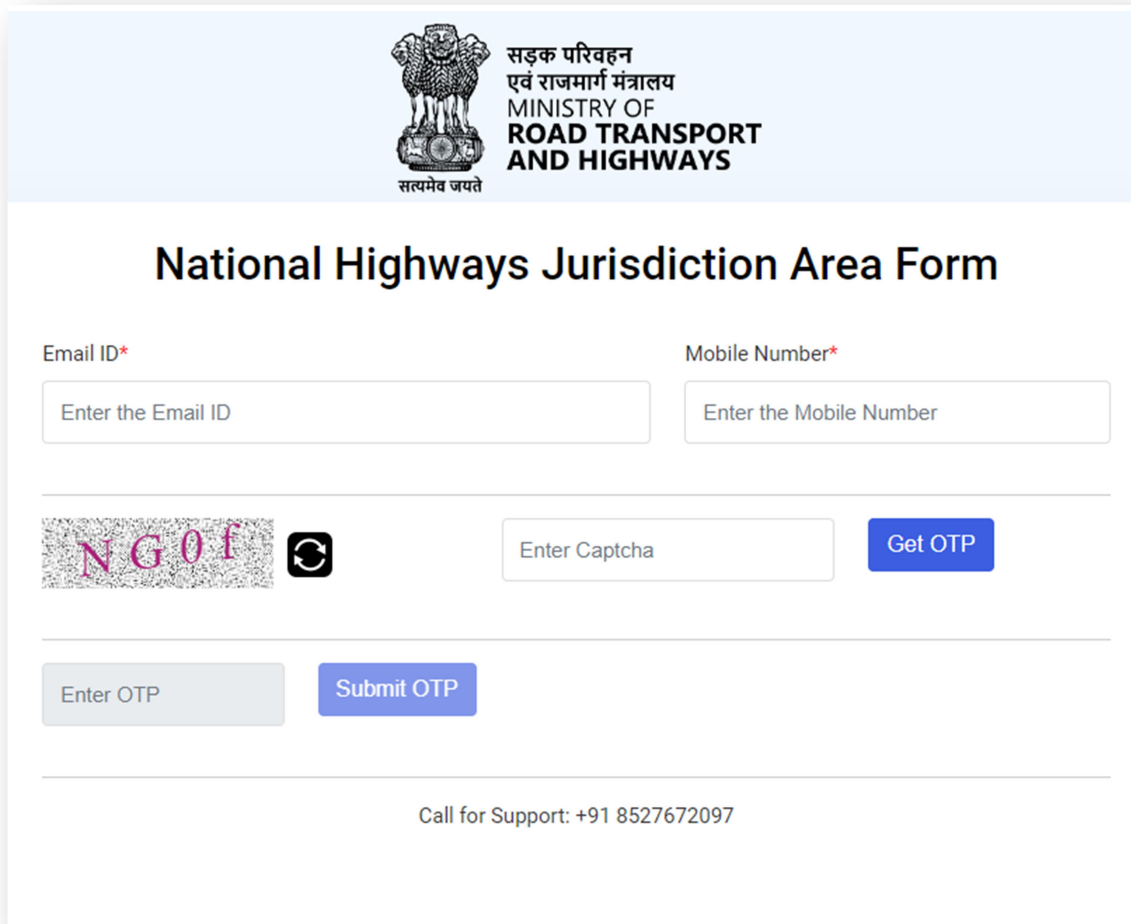
**Improve Communication Flow:** Enhance communication flow within the system by establishing a standardized data collection process.

The SOP will follow a structured approach to accomplish these objectives, ensuring efficiency, accuracy, and transparency in the data collection process for National Highways.

## Login Procedure

The login process for all Regional Offices (ROs) and Project Implementation Units (PIUs) from Ministry of Road Transport & Highways (MoRTH), National Highways Authority of India (NHAI), and National Highways and Infrastructure Development Corporation Limited (NHIDCL) is as follows:

**URL:** [https://media.morth.gov.in/morth\\_srs/login.php](https://media.morth.gov.in/morth_srs/login.php)



The screenshot shows the login interface for the National Highways Jurisdiction Area Form. At the top, there is a header with the Ministry of Road Transport and Highways logo and text in Hindi and English. The main title is "National Highways Jurisdiction Area Form". Below this, there are two input fields: "Email ID\*" and "Mobile Number\*", each with a placeholder text "Enter the Email ID" and "Enter the Mobile Number" respectively. Below these fields is a CAPTCHA section with a distorted image of the letters "NGOf", a refresh button, and an input field labeled "Enter Captcha". To the right of the CAPTCHA is a blue button labeled "Get OTP". Below the CAPTCHA section, there is an input field labeled "Enter OTP" and a blue button labeled "Submit OTP". At the bottom of the form, there is a text line: "Call for Support: +91 8527672097".

Figure 1: Login Form

**Login Credentials:** Each user is provided login credentials based on their Email ID and Closed User Group (CUG) mobile number.

The system grants access to users only if both the Email ID and mobile number match the records in the system.

**Support Contact:** In case of any login issues or queries, users can contact the call center for assistance.

**OTP Verification:** Upon entering the correct credentials, an OTP (One-Time Password) is sent to both the registered Email ID and mobile number.

Users must use this OTP to complete the login process and access the system securely.



**Data Management Protocol for Regional Offices (ROs):**

Regional Offices (ROs) have the responsibility of overseeing Project Implementation Units (PIUs) and verifying their jurisdiction through the designated form. ROs can access and review details of their profiles, including Organization, Name, Designation, and Reporting Person Name. In case of any discrepancies, ROs can contact the admin or call the support number for necessary changes.

**Managing PIUs:** ROs are tasked with managing PIUs under their purview.

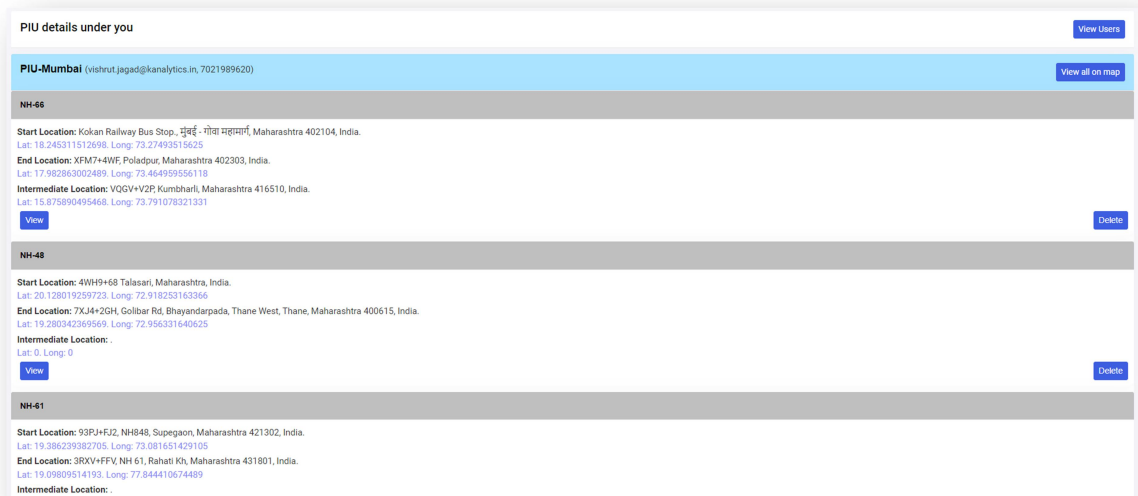


Figure 2: PIU Jurisdiction

They can view the list of PIUs under their jurisdiction, add new PIUs, and modify their details as needed by clicking on “View User” button.

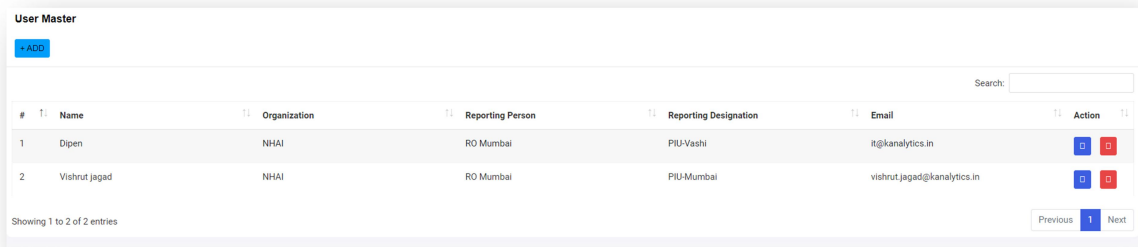


Figure 3: Manage User

**GIS Map Access:** ROs have the capability to view the jurisdiction of PIUs under them on a GIS Map for better visualization and management by clicking on “View all on Map” button.

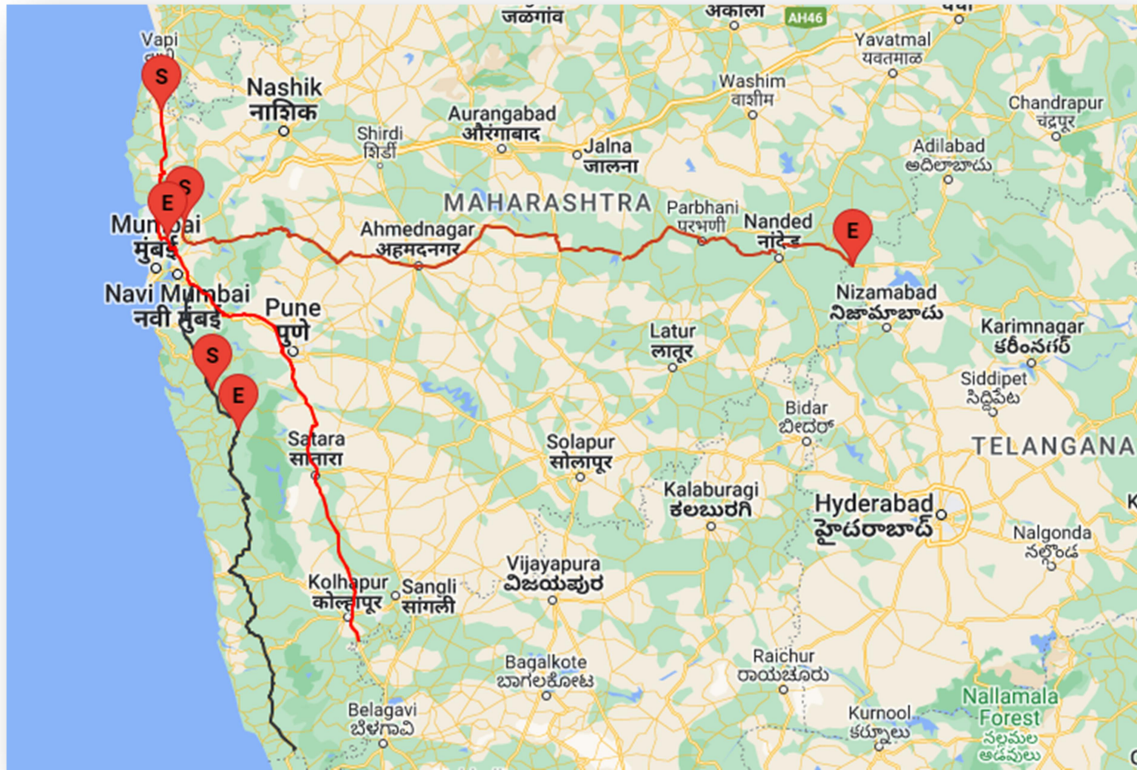


Figure 4: Highways Data on MAP

**Data Verification:** It is imperative for ROs to verify the data provided by the PIUs to ensure accuracy and alignment with organizational standards.

By effectively managing PIUs, utilizing GIS maps, and verifying data, ROs contribute significantly to maintaining a streamlined and efficient data collection process.

**Data Collection Procedure for PIUs**

PIUs are required to define their jurisdiction using the provided form. The form will include details such as Organization, Name, Designation, and Reporting Person Name. In case of any discrepancies, PIUs can contact the admin or call the support number for necessary changes.

The 'Your Details' form contains four input fields: 'Organization' with a dropdown menu showing 'NHAI', 'Name' with the text 'PIU TEST', 'Designation' with the text 'RO Mumbai', and 'Reporting Person Name' with the text 'Director'. Each field has a red asterisk indicating it is a required field.

Figure 5: Profile Details

**Procedure for Adding Highways to Your Jurisdiction:**

The 'Add highways in your Jurisdiction' form has a 'Highway' dropdown menu (currently showing '-- Select --') and a 'State' dropdown menu (also showing '-- Select --'). There is a 'Go' button next to the State dropdown. Below these are three sections for location points: 'Set Start Point', 'Set End Point', and 'Set Intermediate Point'. Each section contains input fields for 'Latitude', 'Longitude', and 'Address', followed by a 'Get Current Location' button with a location pin icon. A 'Save' button is located at the bottom left of the form.

Figure 6: Jurisdiction Form

**Selecting National Highway Number:** Users should choose the National Highway Number from the dropdown list.

This screenshot shows the 'Add highways in your Jurisdiction' form with the 'Highway' dropdown menu open. The dropdown list displays several National Highway numbers: 'NH-566', 'NH-57', 'NH-58', 'NH-59', and 'NH-6'. The 'State' dropdown menu remains closed and shows '-- Select --'. The 'Go' button is visible to the right of the State dropdown.

Figure 7: Highway Selection



If the desired National Highway is not listed, they can opt for the "Other" option to define the number.

The form is titled "Add highways in your Jurisdiction". It contains three main input areas: a "Highway \*" dropdown menu with a "-- Select --" option, a "Provide other highway name\*" text input field with the placeholder "Enter Highway", and a "State \*" dropdown menu with a "-- Select --" option. There is a checkbox labeled "Others" which is checked. A blue "Go" button is located to the right of the State dropdown.

Figure 8: Verification of NH and State

**Defining the State:** After selecting the National Highway Number, users need to specify the state and then click on the "Go" button.

**Verification and Display:** The system verifies the National Highway number with the selected state. If the verification is successful, the system displays information about the stretch of the National Highway within the state boundaries.

The form displays the verified details for Highway NH-48 in Maharashtra. The "Highway \*" dropdown now shows "NH-48" and the "State \*" dropdown shows "Maharashtra". The "Others" checkbox is now unchecked. Below the input fields, the following details are listed: Highway: NH-48, State: Maharashtra, Agency: NHAI, Completion: Already Completed, Greenfield: Brownfield, Lane Status: 6L, Road Type: National Highway, and Speed Limit: 57.84575594. The blue "Go" button remains.

Figure 9: Highway details after Verification

The route of the National Highway will also be reflected on the map.

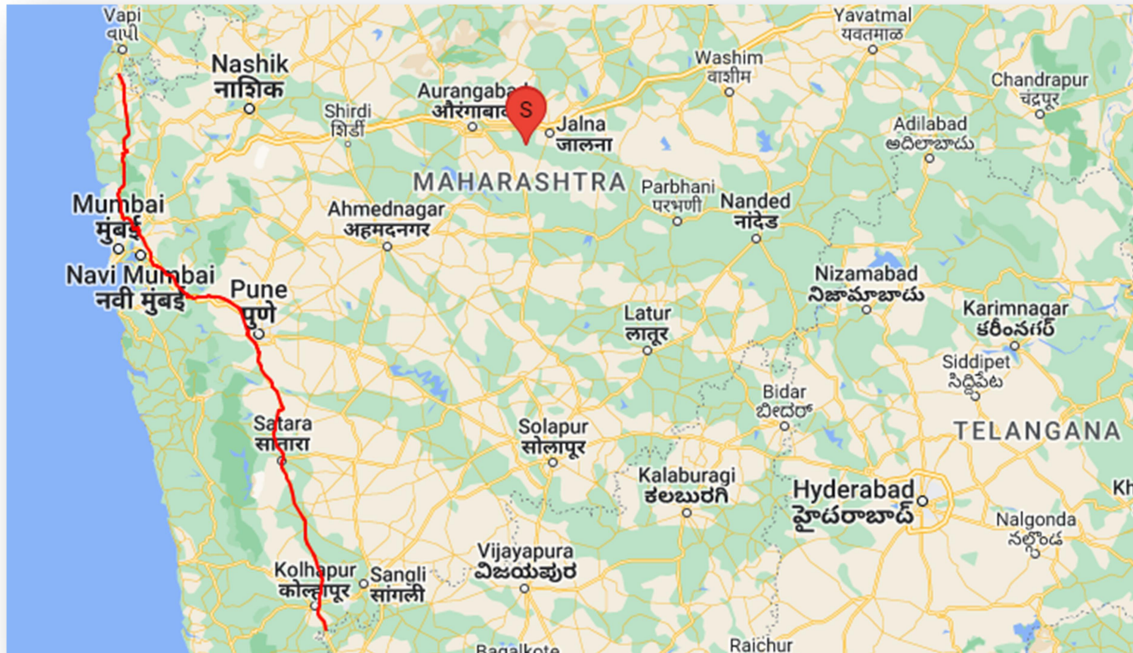


Figure 10: Points on Map

**Point Definition on Map:** Users need to define the Start Point, End Point, and Intermediate Points on the map.

They can define coordinates by either clicking the "Set Start Point" button on the map or using their current location coordinates by clicking "Get Current Location."

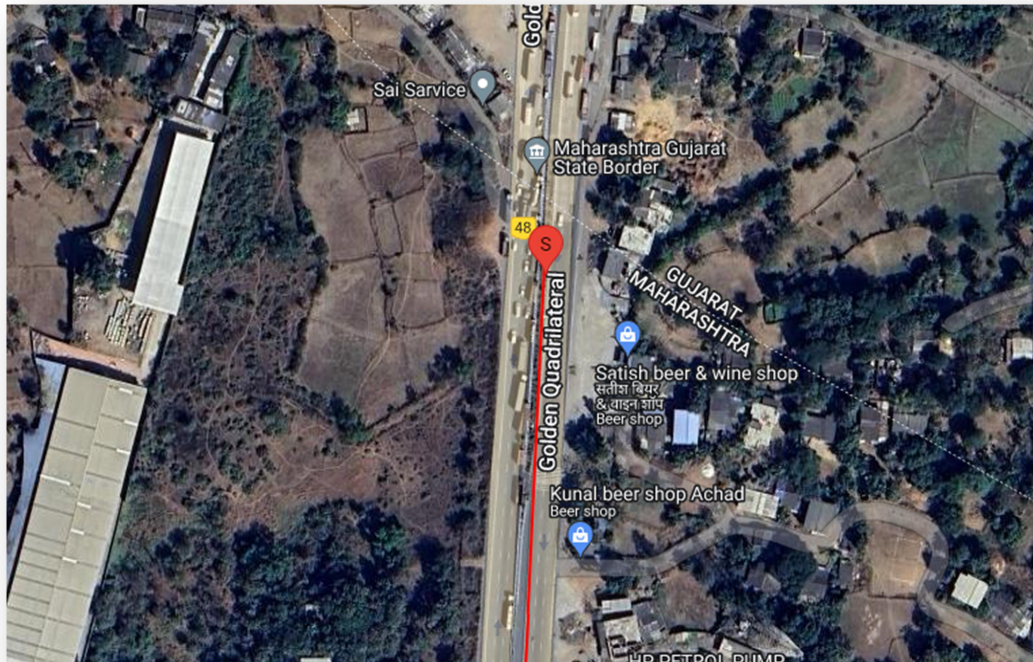


Figure 11: Setting Point on Map View

**Submitting and Editing Points:** Users can submit any point from the list at once and later edit other points by clicking the edit button.

Once all data including latitude, longitude, and location details are filled, the system verifies it with the National Highway number before saving.

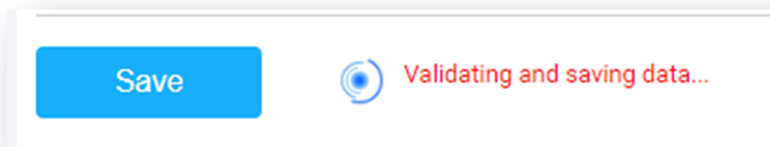


Figure 12: Verification during Data Saving

**Add highways in your Jurisdiction**

Highway \*  ☐ Others State \*

Highway: NH-48  
 State: Maharashtra  
 Agency: NHAI  
 Completion: Already Completed  
 Greenfield: Brownfield  
 Lane Status: 6L  
 Road Type: National Highway  
 Speed Limit: 57.84575594

<input type="button" value="Set Start Point"/>	<input type="text" value="20.223514321543828"/>	<input type="text" value="72.88243115803368"/>	<input type="text" value="NH 48, Achad, Achchhad, Gujarat 396105, India"/>	<input type="button" value="Get Current Location"/>
<input type="button" value="Set End Point"/>	<input type="text" value="16.554268364237853"/>	<input type="text" value="74.31793740774532"/>	<input type="text" value="AH47, Maharashtra 591229, India"/>	<input type="button" value="Get Current Location"/>
<input type="button" value="Set Intermediate Point"/>	<input type="text" value="18.84105978475574"/>	<input type="text" value="73.28122176746157"/>	<input type="text" value="NH 548A, Kalote Rayati, Maharashtra 410202, India"/>	<input type="button" value="Get Current Location"/>

Figure 13: Complete details with Coordinates

**Saved Data and Editing:** The saved list of data will be displayed above the form and can be edited until verified by the RO or frozen by the admin.

**NH-48**

**Start Location:** NH 48, Achad, Achchhad, Gujarat 396105, India.  
 Lat: 20.223514321544. Long: 72.882431158034

**End Location:** AH47, Maharashtra 591229, India.  
 Lat: 16.554268364238. Long: 74.317937407745

**Intermediate Location:** NH 548A, Kalote Rayati, Maharashtra 410202, India.  
 Lat: 18.841059784756. Long: 73.281221767462

Figure 14: Final View of Data

PIUs can submit multiple jurisdictions within their area, and the complete list can be viewed on the map.

## NH-66

**Start Location:** .

Lat: 0. Long: 0

**End Location:** Unnamed Road, Karnataka 583131, India.

Lat: 14.824853637893. Long: 75.922640234375

**Intermediate Location:** VG3W+7QR, Mumbai - Goa Hwy, Lanja, Maharashtra 416701, India.

Lat: 16.852588530229. Long: 73.547045057923

Edit

## NH-48

**Start Location:** 4WH9+68 Talasari, Maharashtra, India.

Lat: 20.128019259723. Long: 72.918253163366

**End Location:** 7XJ4+2GH, Golibar Rd, Bhayandarpada, Thane West, Thane, Maharashtra 400615, India.

Lat: 19.280342369569. Long: 72.956331640625

**Intermediate Location:** .

Lat: 0. Long: 0

Edit

Figure 15: View with Multiples Highways



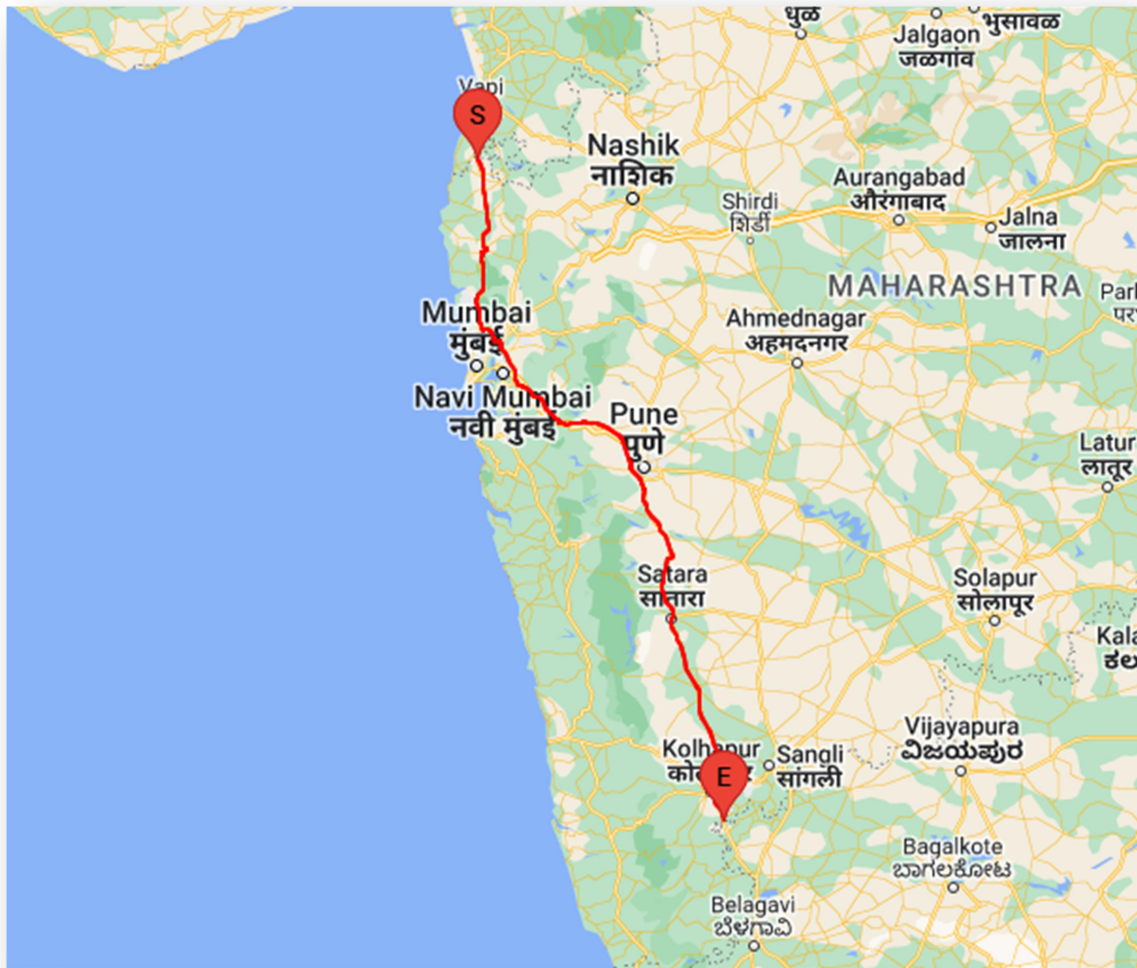


Figure 16: View on Map

### Timeline Guidelines

Project Implementation Units (PIUs) are required to submit their data within a period of 10 days.

PIUs have a window of 5 additional days to make updates to their data. However, once the data is verified by the Regional Office (RO) and subsequently frozen by the admin, no further changes will be accepted.

ROs are responsible for ensuring that the PIUs under their supervision adhere to the timeline and provide accurate data.

ROs must verify the data provided by PIUs within 2 days of its submission.