



Government of India
Ministry of Road Transport & Highways

Office of the Regional Officer, (Civil)
No. 32, 2nd Floor, KSCFL Building, Race Course Road, BENGALURU-560 001
Email: robengaluru@gmail.com; Telephone: 080-22267457, 080-22265765

No. RW/BNG/PER.CASES/KWR. DVN/2013

Dated: 02.01.2023

Notice Inviting Public Comments on proposal seeking Permission for laying of water supply along NH 69 (Old NH 206) between Km 345.500 to 370.600 through open trench method and 12 nos. crossings at Km 346.010, Km 349.270, Km 350.700, Km 352.780, Km 354.850, Km 355.730, Km 359.250, Km 363.100, Km 363.920, Km 366.820, Km 368.450 & Km 369.500 through HDD method, by KUWS&DB Division, Karwar - reg.

Reference: The Executive Engineer, NH Division, Karwar letter No.EE/NHDK/AE-1/water supply permission/2022-23/522 dated 05-11-2022.

The Executive Engineer, NH Division, Karwar vide letter cited under reference above (Annexure I), has submitted proposal seeking permission for laying of water supply along NH 69 (Old NH 206) between Km 345.500 to 370.600 through open trench method and 12 nos. crossings at Km 346.010, Km 349.270, Km 350.700, Km 352.780, Km 354.850, Km 355.730, Km 359.250, Km 363.100, Km 363.920, Km 366.820, Km 368.450 & Km 369.500 through HDD method, by KUWS&DB Division, Karwar .

2. The proposal has been examined as per Ministry's Guidelines vide letter no.RW/NH-33044/29/2015/S&R(R) dated 22.11.2016 and is generally found in order.

3. In view of above, as per Ministry's said guidelines Para 4, public comments are invited on the above proposal making claims and raising objections (on grounds of public inconvenience, safety and general public interest) if any within 30 days on public portal i.e., website of Ministry of Road Transport and Highways (morth.nic.in) in Form-A (copy enclosed) for "Accommodation of Public and Industrial Utility Services along and across National Highways".

Comment Inviting Authority


Regional Officer

Office of the Regional Officer (Civil)

No. 32, 2nd Floor, KSCFL Building, Race Course Road, BENGALURU-560 001
Email: robengaluru@gmail.com; Telephone: 080-22267457, 080-22265765

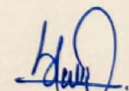
Enclosed: As above.

- Copy to: (i) ✓ The Senior Technical Director, NIC, Transport Bhawan, New Delhi- 110001 for uploading on Ministry's website.
(ii) The Executive Engineer, K.U.W.S & D Board, Karwar Division, Karwar for information.


(Sandesh K)

Asst. Engineer (C)

For Regional Officer-MoRTH


(Sandesh K)

Asst. Engineer (C)

For Regional Officer-MoRTH

FORM A

Form for seeking claims and objections (on grounds of public inconvenience, safety and general public interest) on the application for Accommodation of Public and Industrial Utility Services along and across National Highways.

Subject: Proposal seeking Permission for laying of water supply along NH 69 (Old NH 206) between Km 345.500 to 370.600 through open trench method and 12 nos. crossings at Km 346.010, Km 349.270, Km 350.700, Km 352.780, Km 354.850, Km 355.730, Km 359.250, Km 363.100, Km 363.920, Km 366.820, Km 368.450 & Km 369.500 through HDD method, by KUWS&DB Division, Karwar - Reg.

The claims and objections (on grounds of public inconvenience, safety and general public interest) by the general public needs to be given within 30 days of uploading the online application for comments.

Sl. No	Item	Details
1	Name of the person who is desiring to give claims and objections (on grounds of public inconvenience, safety and general public interest)	
2	Address of the person	
3	Details of the application for Accommodation of Public and Industrial Utility Services along and across National Highways against which claims and objections are being given (name of applicant and other details like site address etc.)	
	a) Application No.	
	b) Name of applicant (who applied to Accommodation of Public and Industrial Utility Services along and across National Highways)	
	c) Details of Application	
4	The claims and objections (on grounds of public inconvenience, safety and general public interest)	

S/- No. 35(R)

GOVERNMENT OF KARNATAKA



Public Works & I.W.T. Department { National Highways }

Phone : 08382-225283

e-mail : eenhkwr@gmail.com

Fax : 08382-225981

No.: EE/NHDK/AE-1/ Water Supply
Permission/2022-23/

Office of the

Executive Engineer,
National Highway Divn., Karwar,
Dated : 05-11-2022

annexure-1

To,
✓ The Chief Engineer - Regional Officer,
Ministry of Road Transport & Highways,
No:32, 2nd Floor, KSCFL Building,
D. Devraj Urs Road (Race course road)
Bangalore

O/o. THE CE-RO
MORT&H, BENGALURU

Diary No.: 3127

Date: 02-12-2022

Sir,

Sub:- Resubmission of proposal for permission for laying of water supply pipeline along the NH-69 (Old NH-206) from Mahime village to Honnavar town under water supply scheme to Honnavar town & enroute villages-reg.

- Ref:-
- 1) Assistant Executive Engineer, KUWS&DB, Sub-Division Karwar office Ltr. No.AEE/KEB/KWR/JE/2020-21 Dtd: 18-09-2021
 - 2) Assistant Executive Engineer, NH, Sub-Division Honnavar Ltr No. 105 Dtd: 18-09-2021
 - 3) Chief Engineer, National Highways, Bangalore office ltr no. 1987 dtd:12-11-2022
 - 4) Your Office, Ltr. No. 1553 Dtd: 23-02-2022
 - 5) Town Panchayath, Honnavar Office Ltr No.TPH: Water Supply: SR 2022-23 Dtd: 22-04-2022
 - 6) Assistant Executive Engineer, NH, Sub-Division Honnavar Ltr No. AEE/NH/SDN/HNR/WATER SUPPLY Permission/ 2021-22/42 Dtd: 23-05-2022
 - 7) Ministry of Road Transport Highways Delhi Ltr No. Enhancement/ NTC/ MoRT&H/2022/1 Dtd: 13-05-2022
 - 8) Chief Engineer, NH Zone, Bengaluru Ltr No.CENH/TA-1/ AE-4/ NOC/2022-23/903 Dtd: 16-06-2022
 - 9) AEE, KUWS&DB, Karwar office Ltr No.KWB/AEE/KWR/ AE-2/HNR-WSS/NH-69/2022-23/466 Dtd: 02-07-2022
 - 10) This office Ltr No. 94 Dtd: 29-07-2022
 - 11) AEE, KUWS&DB, Karwar office Ltr No.KWB/AEE/KWR/ AE-2/HNR-WSS/NH-69/2022-23/466 Dtd: 02-07-2022
 - 12) AEE, KUWS&DB, Karwar office Ltr No.KWB/AEE/KWR/ AE-2/HNR-WSS/NH-69/2022-23/876 Dtd: 21-09-2022
 - 13) AEE, NH, Sub Division Honnavar office Ltr No office Ltr. No. 160 Dtd: 19-10-2022

Adverting to the above subject, the proposal for laying MS pipeline along NH-69 (Old NH-206) was submitted vide ref (3). And it was returned by your office

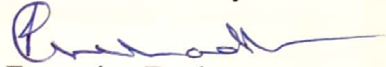
vide ref(4) stating that the water supply pipeline will become an obstruction for the future expansion of NH-69.

Hence KUWS&DB authorities have resubmitted proposal by modifying the drawings of pipeline alignment along proposed ROW of 25Mtr from Km 0.00 to Km 1.50 and PROW of 16Mtr from Km 1.50 to Km 22.50 vide ref(12). Hence all the observations have been complied and re-revised proposal is hereby re-submitted along with Check list, Drawing, Detailed estimate and Calculation of license fee as per Ministry circular No.RW/NH-33044/29/2015/S&R(R) Dtd: 22-11-2016.

The above compliance is submitted for your kind perusal & it is requested to accord approval for laying water supply pipeline from Km. 346.80 (New Km 23.70) to Km 370.60 (New Km 0.00) on NH-206 (New NH-69) Tumkur Honnavar section (Honnavar Mulabagilu) .

Encl: Proposal in 2 sets

Yours Faithfully



Executive Engineer,
National Highway, Division,
Karwar

CHAINAGE (Km)

345.500

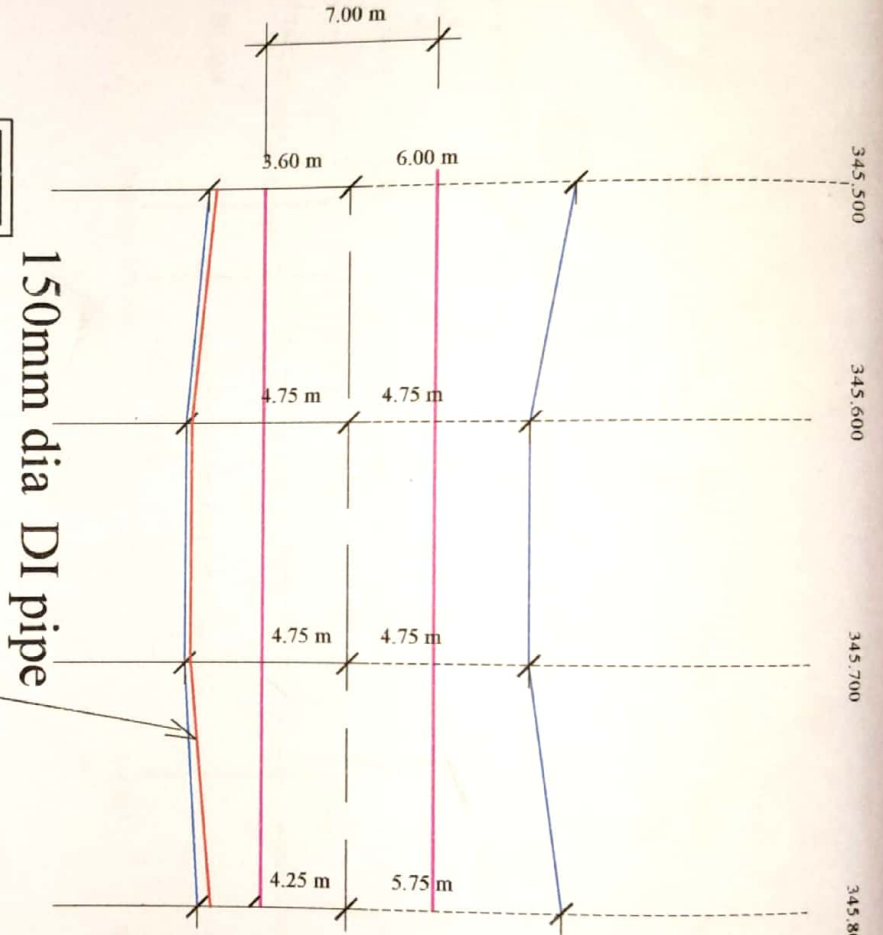
345.600

345.700

345.800

LHS

RHS



UPPON TANK 2

150mm dia DI pipe

CHAINAGE FROM 345.500 KMS TO 345.800 KMS

ASSISTANT EXECUTIVE ENGINEER
NATIONAL HIGHWAY SUB-DIVISION
HONNAVAR

LEGEND

—	NH ROW WITH KACHHA DRAIN
—	NH CARRIAGEWAY
—	PROPOSED PIPE LINE

CHAINAGE (Km)		LENGTH (mtr)		REMARKS
FROM	TO	LHS	RHS	
345.500	345.800	0.000	300	150 mm dia DI PIPELINE

EXECUTIVE ENGINEER
NATIONAL HIGHWAY DIVISION
KARWAR

KARNATAKA URBAN WATER SUPPLY & DRAINAGE BOARD

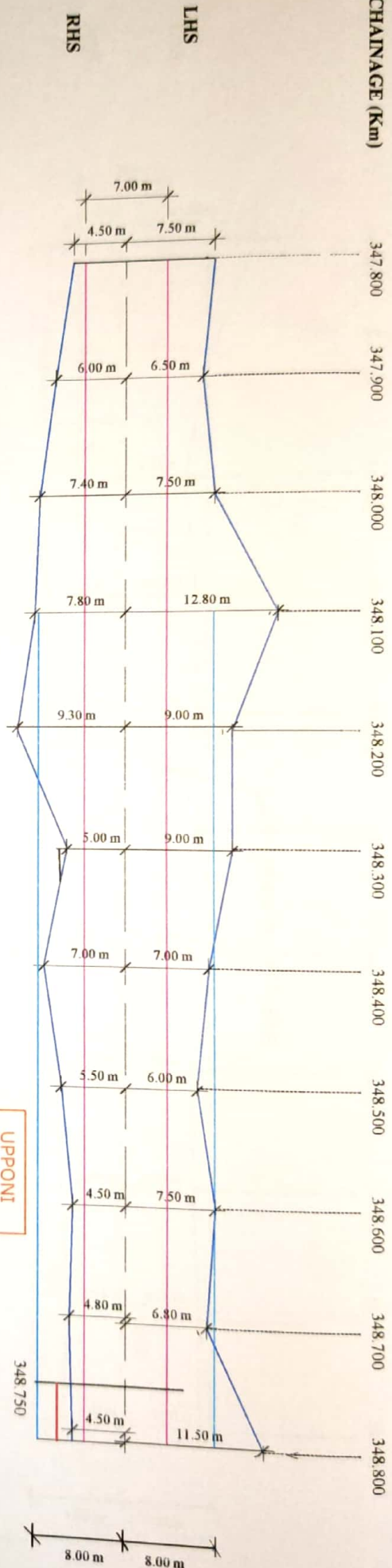
LAYING OF WATER SUPPLY PIPE LINE ALONG NH 69
(OLD NH 206) FROM MAHIME VILLAGE TO HONNAVAR

Sheet No : 01

ASSISTANT EXECUTIVE ENGINEER
KUWS&DB, SUB DIVISION
KARWAR

EXECUTIVE ENGINEER
KUWS&DB, DIVISION
KARWAR

CHAINAGE (Km)



CHAINAGE FROM 347.800 KMS TO 348.800 KMS

ASSISTANT EXECUTIVE ENGINEER
NATIONAL HIGHWAY SUB-DIVISION
HONNAVAR

LEGEND

	NH PROW
	NH ROW WITH KACHHA DRAIN
	NH CARRIAGEWAY
	PROPOSED PIPE LINE

CHAINAGE (Km)		LENGTH (mtr)		REMARKS
FROM	TO	LHS	RHS	
348.750	348.800		50	457 mm dia MS PIPELINE

EXECUTIVE ENGINEER
NATIONAL HIGHWAY DIVISION
KARWAR

KARNATAKA URBAN WATER SUPPLY & DRAINAGE BOARD

LAYING OF WATER SUPPLY PIPE LINE ALONG N.H.69
(OLD NH 206) FROM MAHIME VILLAGE TO HONNAVAR

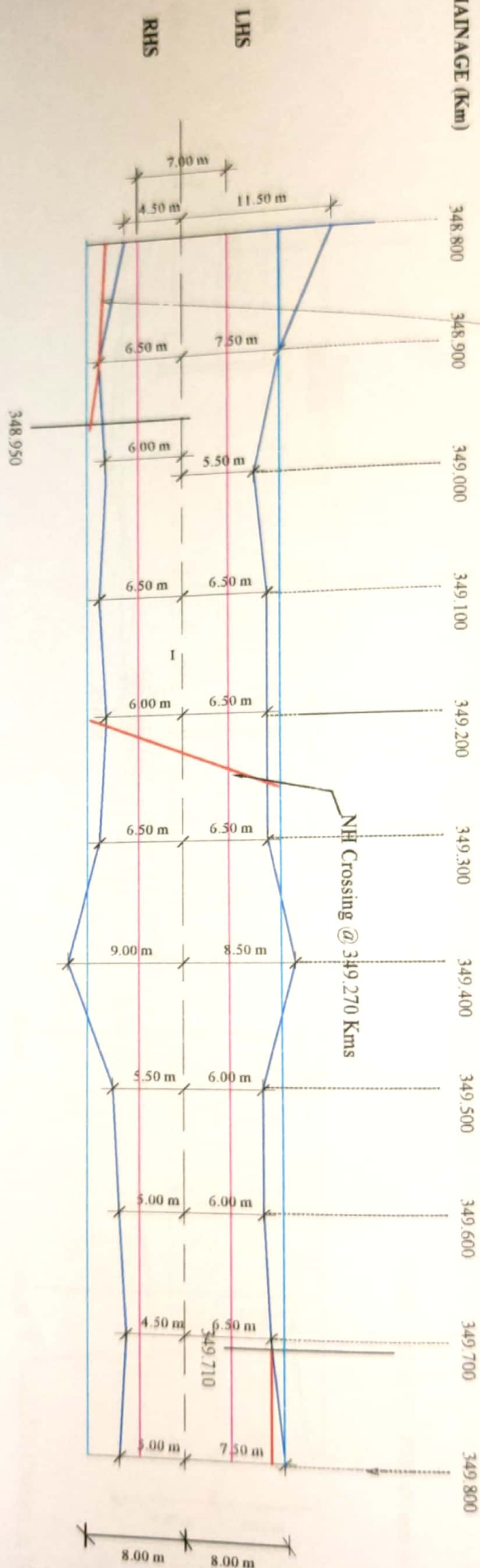
Sheet No : 03

ASSISTANT EXECUTIVE ENGINEER
K.U.W.S.&D.B. SUB DIVISION
KARWAR

EXECUTIVE ENGINEER
K.U.W.S.&D.B. DIVISION
KARWAR

CHAINAGE (Km)

RAISING MAIN M.S PIPE 457mm dia



CHAINAGE FROM 348.800 KMS TO 349.800 KMS

ASSISTANT EXECUTIVE ENGINEER
NATIONAL HIGHWAY SUB-DIVISION
HONNAVAR

LEGEND

—	NH FROW
—	NH ROW WITH KACHHA DRAIN
—	NH CARBLAGWAY
—	PROPOSED PIPE LINE

CHAINAGE (Km)		LENGTH (mtr)		REMARKS
FROM	TO	LHS	RHS	
348.800	348.950		1.50	457 mm dia MS PIPELINE
349.710	349.800	90		457 mm dia MS PIPELINE
@	349.270	18		NH CROSSING

EXECUTIVE ENGINEER
NATIONAL HIGHWAY DIVISION
KARWAR

KARNATAKA URBAN WATER SUPPLY & DRAINAGE BOARD

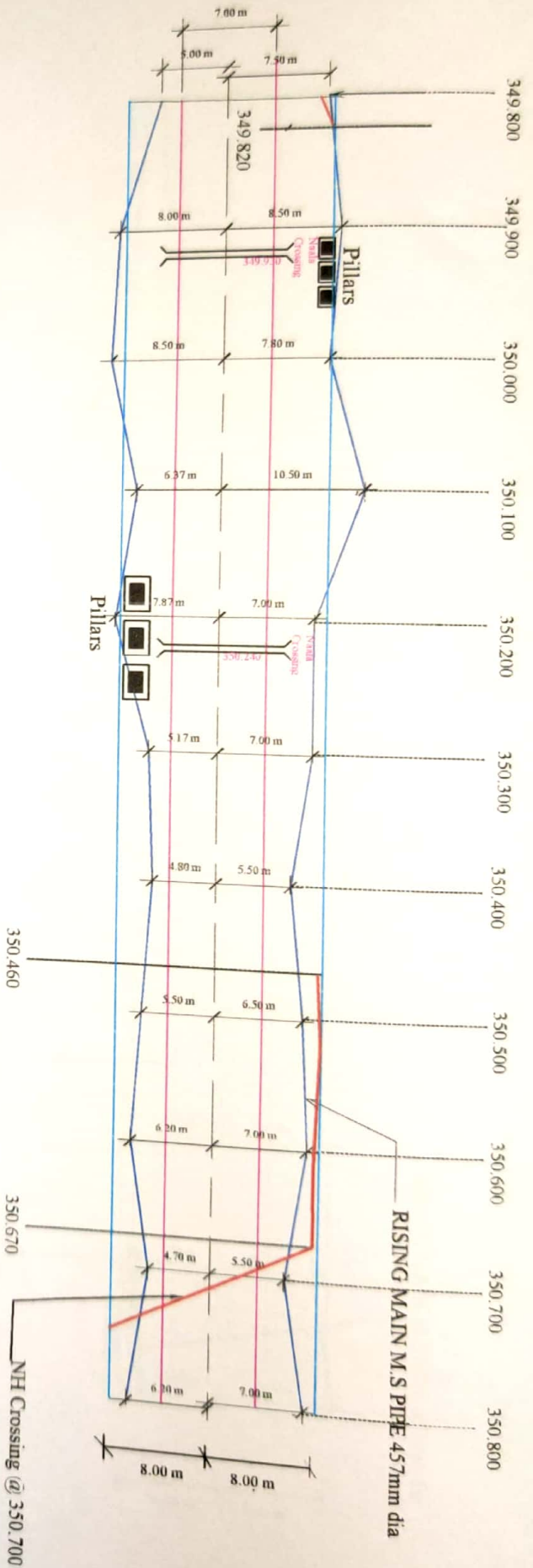
LAYING OF WATER SUPPLY PIPE LINE ALONG NH 69
(OLD NH 206) FROM MAHIME VILLAGE TO HONNAVAR

Sheet No : 04

ASSISTANT EXECUTIVE ENGINEER
KUWS&DB, SUB DIVISION
KARWAR

EXECUTIVE ENGINEER
KUWS&DB, DIVISION
KARWAR

CHAINAGE (Km)



CHAINAGE FROM 349.800 KMS TO 350.800 KMS

ASSISTANT EXECUTIVE ENGINEER
NATIONAL HIGHWAY SUB-DIVISION
HONNAVAR

LEGEND

	NH FROM
	NH ROW WITH KACHHA DRAIN
	NH CARBLAGWAY (7.00 m)
	PROPOSED PIPE LINE

CHAINAGE (Km)		LENGTH (mtr)		REMARKS
FROM	TO	LHS	RHS	
349.800	349.820	20		457 mm dia MS PIPELINE
@	350.700	18		NH CROSSING
350.460	350.670	210		457 mm dia MS PIPELINE

EXECUTIVE ENGINEER
NATIONAL HIGHWAY DIVISION
KARWAR

KARNATAKA URBAN WATER SUPPLY & DRAINAGE BOARD

LAYING OF WATER SUPPLY PIPE LINE ALONG N.H.69
(OLD NH 206) FROM MAHIME VILLAGE TO HONNAVAR

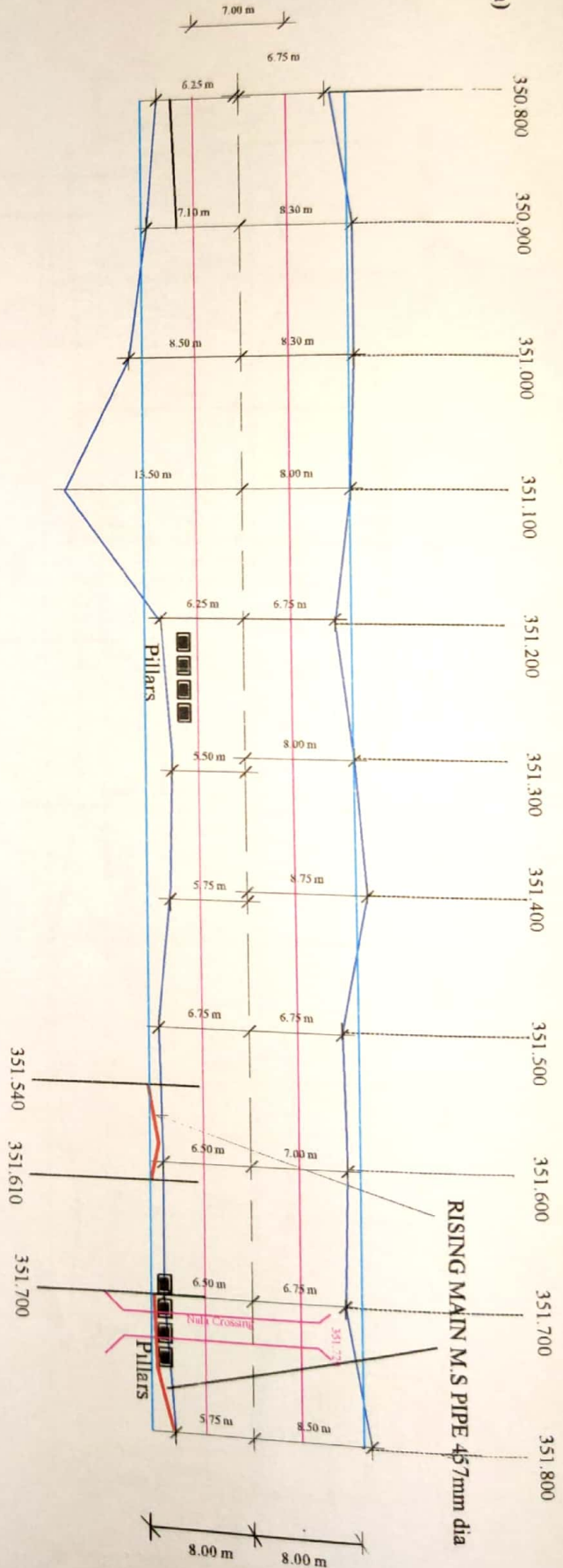
Sheet No : 05

ASSISTANT EXECUTIVE ENGINEER
KUWS&DB, SUB DIVISION
KARWAR

EXECUTIVE ENGINEER
KUWS&DB, DIVISION
KARWAR

CHAINAGE (Km)

LHS
RHS



CHAINAGE FROM 350.800 KMS TO 351.800 KMS

ASSISTANT EXECUTIVE ENGINEER
NATIONAL HIGHWAY SUB-DIVISION
HONNAVAR

LEGEND

—	NH PROW
—	NH ROW WITH KACHHA DRAIN
—	NH CARBLAGWAY (7.00 m)
—	PROPOSED PIPE LINE

CHAINAGE (Km)		LENGTH (mtr)		REMARKS
FROM	TO	LHS	RHS	
351.540	351.610		70	457 mm dia MS PIPELINE
351.700	351.800		100	457 mm dia MS PIPELINE

EXECUTIVE ENGINEER
NATIONAL HIGHWAY DIVISION
KARWAR

KARNATAKA URBAN WATER SUPPLY & DRAINAGE BOARD

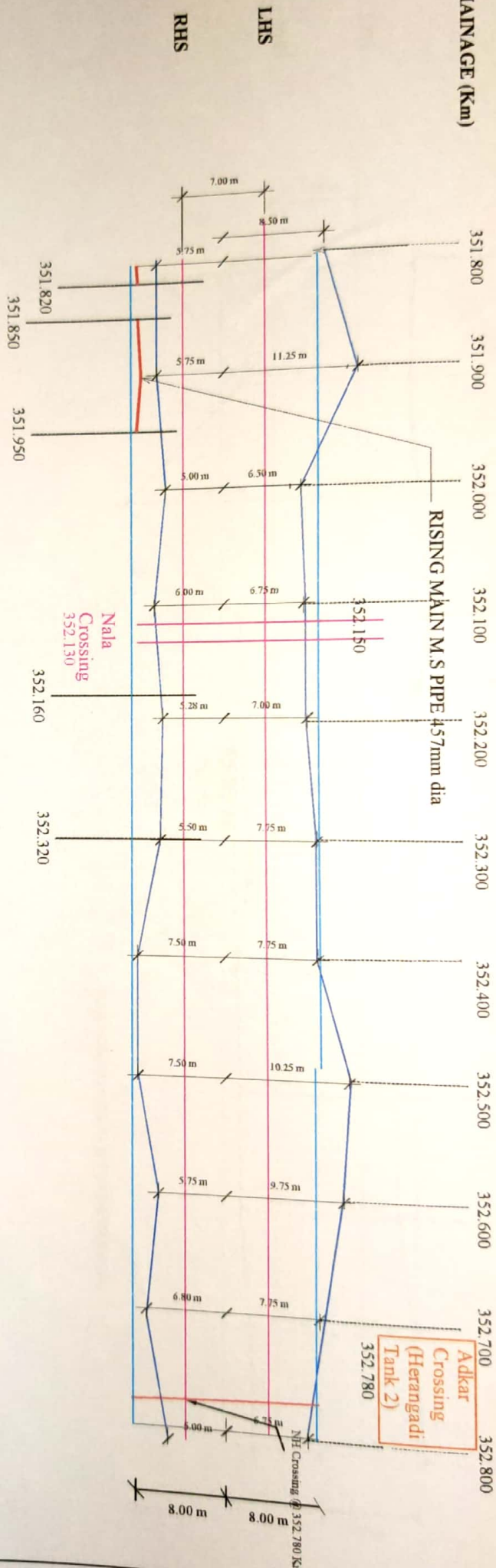
LAYING OF WATER SUPPLY PIPE LINE ALONG N.H.69
(OLD NH 206) FROM MAHIME VILLAGE TO HONNAVAR

Sheet No : 06

ASSISTANT EXECUTIVE ENGINEER
KUWS&DB, SUB DIVISION
KARWAR

EXECUTIVE ENGINEER
KUWS&DB, DIVISION
KARWAR

CHAINAGE (Km)



CHAINAGE FROM 351.800 KMS TO 352.800 KMS

ASSISTANT EXECUTIVE ENGINEER
NATIONAL HIGHWAY SUB-DIVISION
HONNAVAR

LEGEND

—	NH PROW
—	NH ROW WITH KACHHA DRAIN
—	NH CARRIAGEWAY (7.00 m)
—	PROPOSED PIPE LINE

CHAINAGE (Km)	FROM	TO	LENGTH (mtr)		REMARKS
			LHS	RHS	
	351.800	351.820		20	457 mm dia MS PIPELINE
	351.850	351.950		100	457 mm dia MS PIPELINE
@	352.780		18		NH CROSSING

KARNATAKA URBAN WATER SUPPLY & DRAINAGE BOARD

LAYING OF WATER SUPPLY PIPE LINE ALONG NH 69
(OLD NH 206) FROM MAHIME VILLAGE TO HONNAVAR

Sheet No : 7

ASSISTANT EXECUTIVE ENGINEER
KUWS&DB, SUB DIVISION
KARWAR

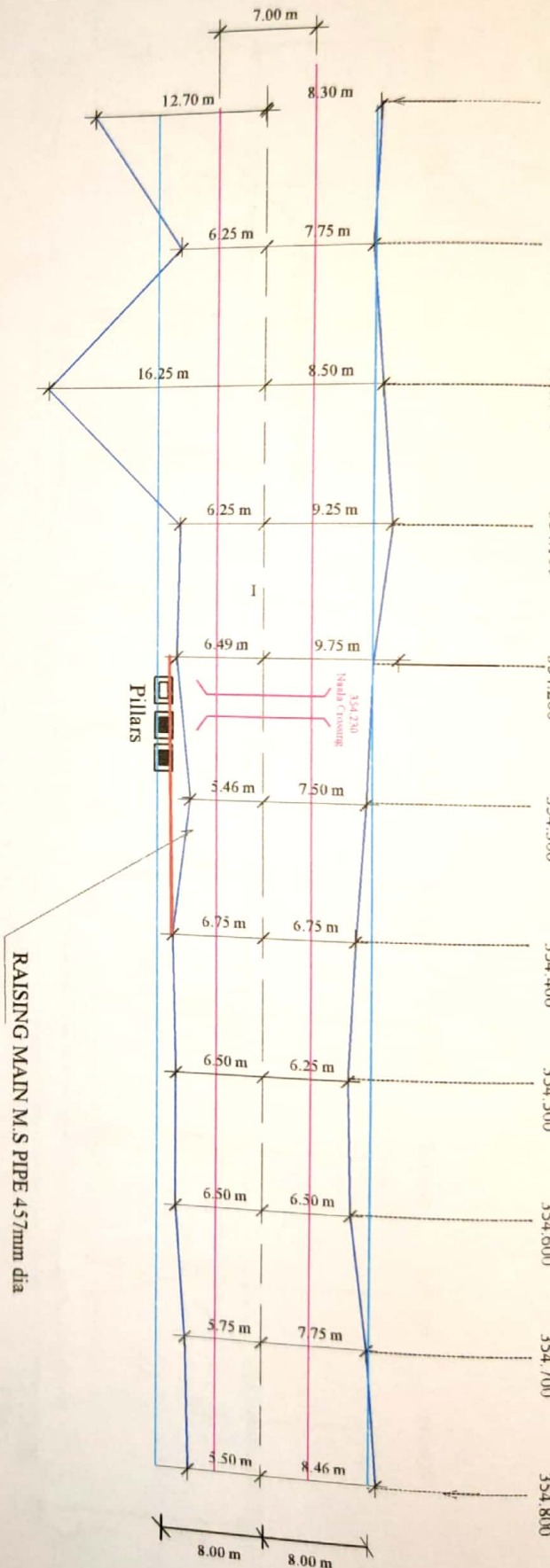
EXECUTIVE ENGINEER
KUWS&DB, DIVISION
KARWAR

CHAINAGE (Km)

353.800 353.900 354.000 354.100 354.200 354.300 354.400 354.500 354.600 354.700 354.800

LHS

RHS



CHAINAGE FROM 353.800 KMS TO 354.800 KMS

ASSISTANT EXECUTIVE ENGINEER
NATIONAL HIGHWAY SUB-DIVISION
HONNAVAR

LEGEND

—	NH PROW
—	NH ROW WITH KACHHA DRAIN
—	NH CARRIAGEWAY (7.00 m)
—	PROPOSED PIPE LINE

CHAINAGE (km)		LENGTH (mm)		REMARKS
FROM	TO	LHS	RHS	
354.200	354.400		200	457 mm dia MS PIPELINE

KARNATAKA URBAN WATER SUPPLY & DRAINAGE BOARD

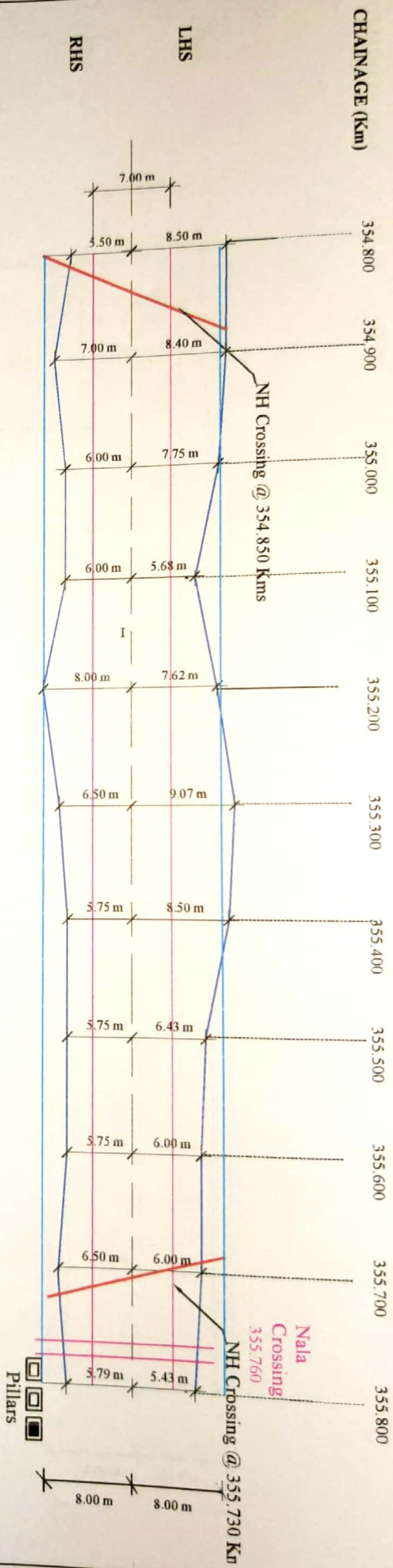
EXECUTIVE ENGINEER
NATIONAL HIGHWAY DIVISION
KARWAR

LAYING OF WATER SUPPLY PIPE LINE ALONG NH 69
(OLD NH 206) FROM MAHIME VILLAGE TO HONNAVAR

Sheet No : 8

ASSISTANT EXECUTIVE ENGINEER
KUMS&DB, SUB DIVISION
KARWAR

EXECUTIVE ENGINEER
KUMS&DB, DIVISION
KARWAR



CHAINAGE FROM 354.800 KMS TO 355.800 KMS

ASSISTANT EXECUTIVE ENGINEER
NATIONAL HIGHWAY SUB-DIVISION
HONNAVAR

LEGEND

NH PROW
NH ROW WITH KACHHA DRAIN
NH CARRIAGEWAY (7.00 m)
PROPOSED PIPE LINE

CHAINAGE (Km)		LENGTH (mt)		REMARKS
FROM	TO	LHS	RHS	
@	354.850	18.00		NH CROSSING
@	355.730	18.00		NH CROSSING

EXECUTIVE ENGINEER
NATIONAL HIGHWAY DIVISION
KARWAR

KARNATAKA URBAN WATER SUPPLY & DRAINAGE BOARD

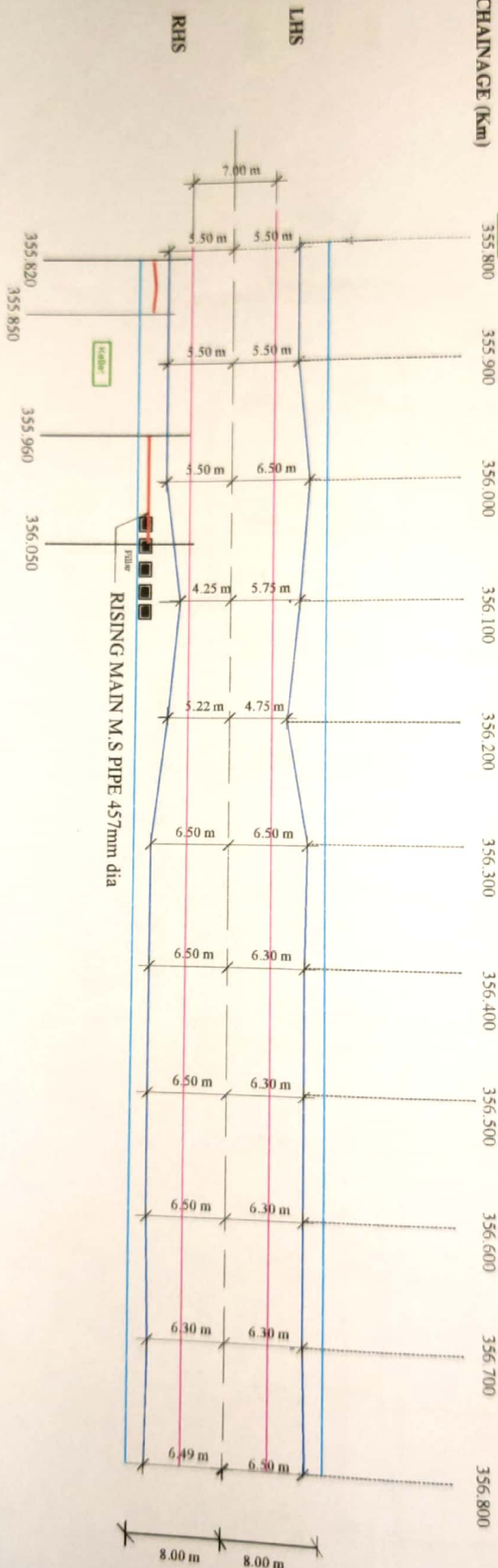
LAYING OF WATER SUPPLY PIPE LINE ALONG NH 69
(OLD NH 206) FROM MAHIME VILLAGE TO HONNAVAR

Sheet No : 9

ASSISTANT EXECUTIVE ENGINEER
KUWS&DB, SUB DIVISION
KARWAR

EXECUTIVE ENGINEER
KUWS&DB, DIVISION
KARWAR

CHAINAGE (Km)



ASSISTANT EXECUTIVE ENGINEER
NATIONAL HIGHWAY SUB-DIVISION
HONNAVAR

LEGEND

	NH PROW
	NH ROW WITH KACHHA DRAIN
	NH CARBLAGWAY (7.00 m)
	PROPOSED PIPE LINE

CHAINAGE FROM 355.800 KMS TO 356.800 KMS

CHAINAGE (Km)		LENGTH (m)		REMARKS
FROM	TO	LHS	RHS	
355.820	355.850		30	457 mm dia M.S PIPELINE
355.960	356.050		90	457 mm dia M.S PIPELINE

EXECUTIVE ENGINEER
NATIONAL HIGHWAY DIVISION
KARWAR

KARNATAKA URBAN WATER SUPPLY & DRAINAGE BOARD

LAYING OF WATER SUPPLY PIPE LINE ALONG NH 69
(OLD NH 206) FROM NAHIME VILLAGE TO HONNAVAR

Sheet No : 10

ASSISTANT EXECUTIVE ENGINEER
K.U.W.S.&D.B. SUB DIVISION
KARWAR

EXECUTIVE ENGINEER
K.U.W.S.&D.B. DIVISION
KARWAR

CHAINAGE (Km)

357.800

357.900

358.000

358.100

358.200

358.300

358.400

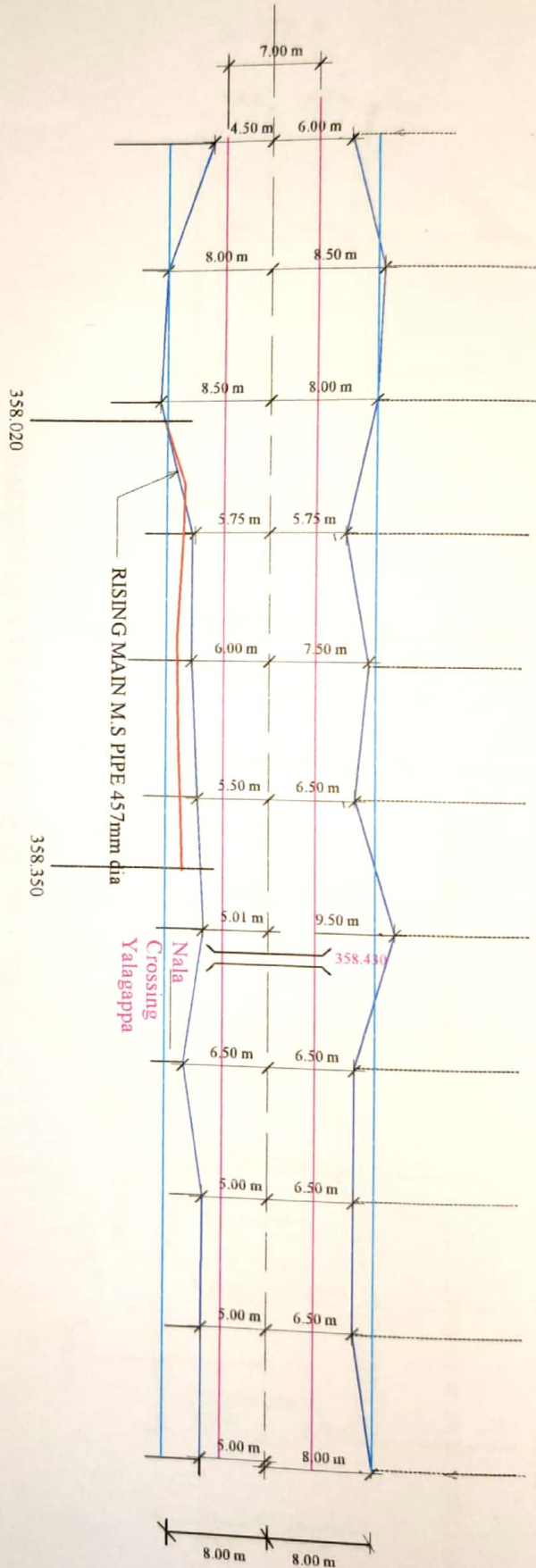
358.500

358.600

358.700

358.800

LHS
RHS



CHAINAGE FROM 357.800 KMS TO 358.800 KMS

ASSISTANT EXECUTIVE ENGINEER
NATIONAL HIGHWAY SUB-DIVISION
HONNAVAR

LEGEND

—	NH PROW
—	NH ROW WITH KACHHA DRAIN
—	NH CARRIAGEWAY (7.00 m)
—	PROPOSED PIPE LINE

CHAINAGE (Km)		LENGTH (mtr)		REMARKS
FROM	TO	LHS	RHS	
358.020	358.350		330	457 mm dia MS PIPELINE

EXECUTIVE ENGINEER
NATIONAL HIGHWAY DIVISION
KARWAR

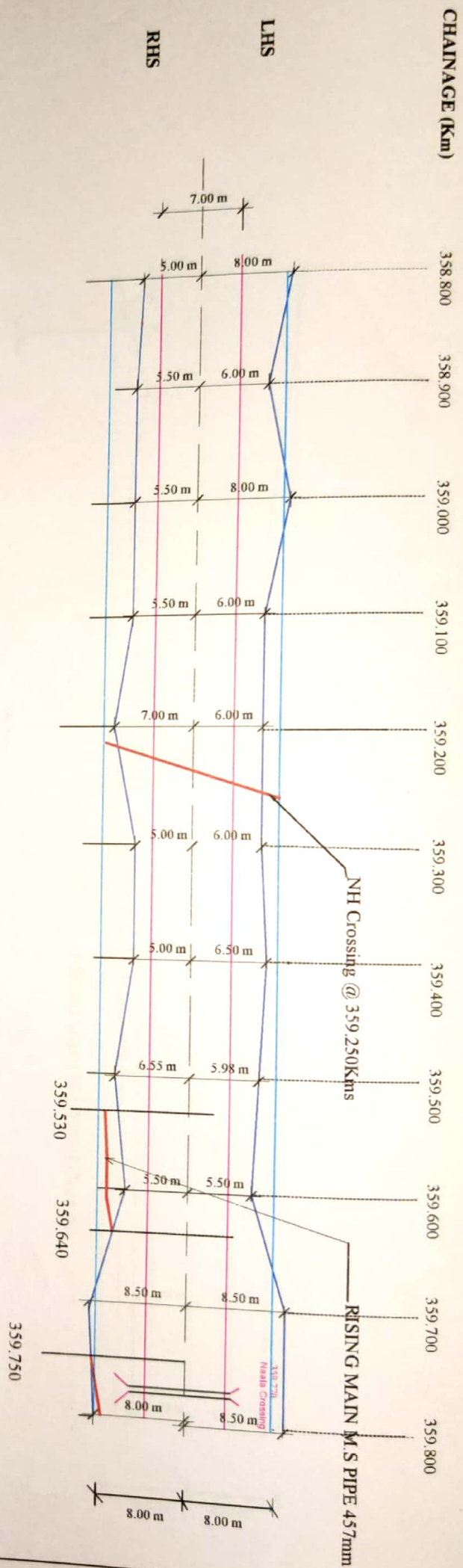
KARNATAKA URBAN WATER SUPPLY & DRAINAGE BOARD

LAYING OF WATER SUPPLY PIPE LINE ALONG NH 69
(OLD NH 206) FROM MAHIME VILLAGE TO HONNAVAR

Sheet No : 11

ASSISTANT EXECUTIVE ENGINEER
KIWS&DR, SUB DIVISION
KARWAR

EXECUTIVE ENGINEER
KIWS&DR, DIVISION
KARWAR



CHAINAGE FROM 358.800 KMS TO 359.800 KMS

ASSISTANT EXECUTIVE ENGINEER
NATIONAL HIGHWAY SUB-DIVISION
HONNAVAR

LEGEND

—	NH PROW
—	NH ROW WITH KACHHA DRAIN
—	NH CARLAGEWAY (7.00 m)
—	PROPOSED PIPE LINE

CHAINAGE (Km)		LENGTH (m)		REMARKS
FROM	TO	LHS	RHS	
@	359,250	18		CROSSING
359,530	359,640	110		457 mm dia MS PIPELINE
359,750	359,800	50		457 mm dia MS PIPELINE

KARNATAKA URBAN WATER SUPPLY & DRAINAGE BOARD

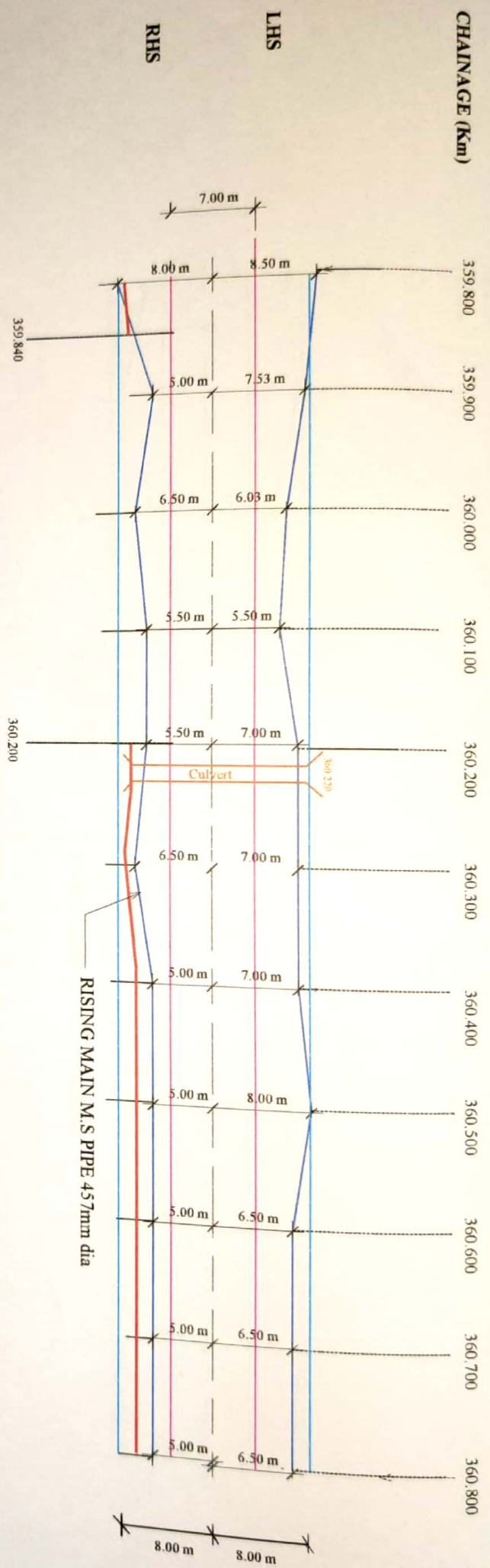
LAYING OF WATER SUPPLY PIPE LINE ALONG NH 69
(OLD NH 206) FROM MAHIME VILLAGE TO HONNAVAR

Sheet No : 12

ASSISTANT EXECUTIVE ENGINEER
KIWS&DB, SUB DIVISION
KARWAR

EXECUTIVE ENGINEER
KIWS&DB, DIVISION
KARWAR

EXECUTIVE ENGINEER
NATIONAL HIGHWAY DIVISION
KARWAR



CHAINAGE FROM 359.800 KMS TO 360.800 KMS

ASSISTANT EXECUTIVE ENGINEER
NATIONAL HIGHWAY SUB-DIVISION
HONNAVAR

LEGEND

NH PROW
NH ROW WITH KACHHA DRAIN
NH CARLAGEWAY (7.00 m)
PROPOSED PIPE LINE

CHAINAGE (km)		LENGTH (m)		REMARKS
FROM	TO	LHS	RHS	
359.800	359.840		40	457 mm dia MS PIPELINE
360.200	360.800		600	457 mm dia MS PIPELINE

EXECUTIVE ENGINEER
NATIONAL HIGHWAY DIVISION
KARWAR

KARNATAKA URBAN WATER SUPPLY & DRAINAGE BOARD
LAYING OF WATER SUPPLY PIPE LINE ALONG N.H. 69
(OLD NH 206) FROM MAHIME VILLAGE TO HONNAVAR

Sheet No : 13

ASSISTANT EXECUTIVE ENGINEER
K.U.W.S.&D.B. SUB DIVISION
KARWAR

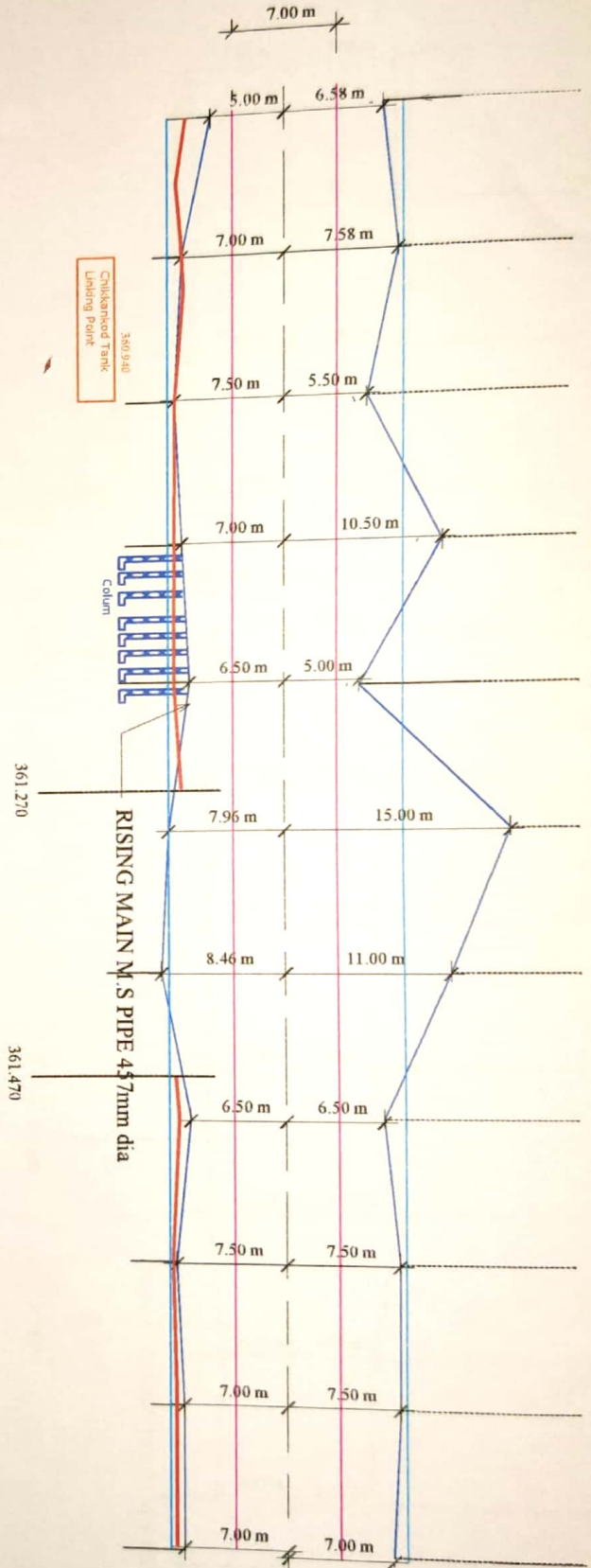
EXECUTIVE ENGINEER
K.U.W.S.&D.B. DIVISION
KARWAR

CHAINAGE (Km)

360.800 360.900 361.000 361.100 361.200 361.300 361.400 361.500 361.600 361.700 361.800

LHS

RHS



CHAINAGE FROM 360.800 KMS TO 361.800 KMS

ASSISTANT EXECUTIVE ENGINEER
NATIONAL HIGHWAY SUB-DIVISION
HONNAVAR

LEGEND

—	NH PROW
—	NH ROW WITH KACHHA DRAIN
—	NH CARRIAGEWAY (7.00 m)
—	PROPOSED PIPE LINE

CHAINAGE (Km)		LENGTH (mtr)		REMARKS
FROM	TO	LHS	RHS	
360.800	361.270		470	457 mm dia MS PIPELINE
361.470	361.800		330	457 mm dia MS PIPELINE

EXECUTIVE ENGINEER
NATIONAL HIGHWAY DIVISION
KARWAR

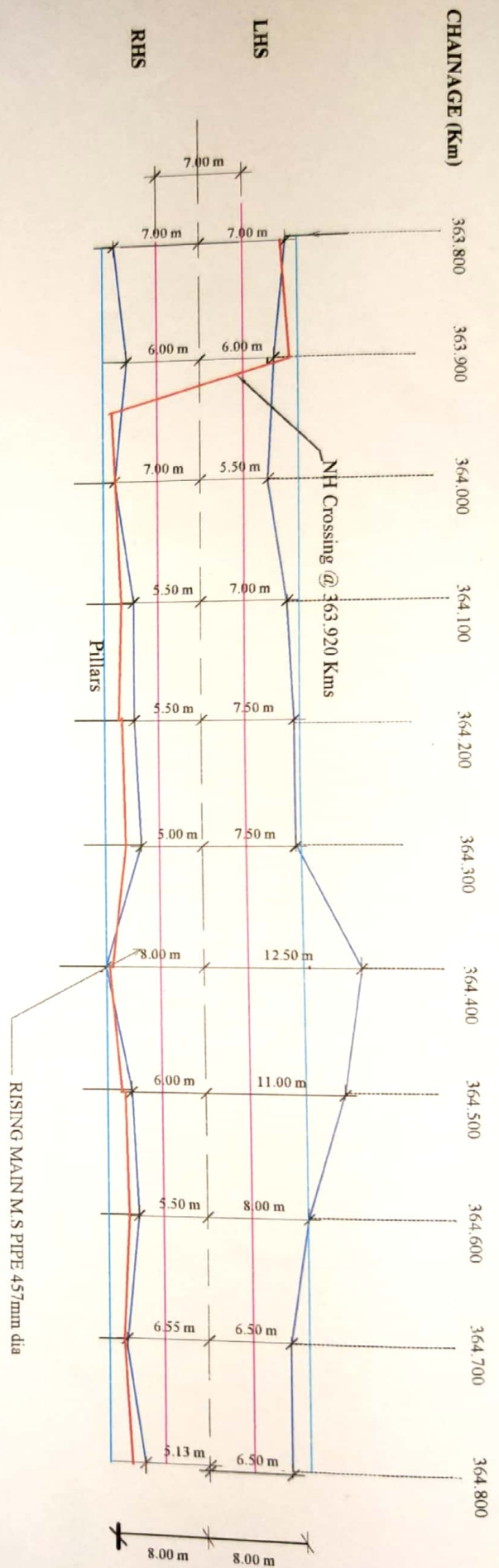
KARNATAKA URBAN WATER SUPPLY & DRAINAGE BOARD

LAYING OF WATER SUPPLY PIPE LINE ALONG NH 69
(OLD NH 206) FROM MAHIME VILLAGE TO HONNAVAR

Sheet No : 14

ASSISTANT EXECUTIVE ENGINEER
KUWS&DB, SUB DIVISION
KARWAR

EXECUTIVE ENGINEER
KUWS&DB, DIVISION
KARWAR



CHAINAGE FROM 363.800 KMS TO 364.800 KMS

ASSISTANT EXECUTIVE ENGINEER
NATIONAL HIGHWAY SUB-DIVISION
HONNAVAR

LEGEND

NH PROW
NH ROW WITH KACHHA DRAIN
NH CARRIAGEWAY (7.00 m)
PROPOSED PIPE LINE

CHAINAGE (Km)	LENGTH (mtr)		REMARKS
	FROM	TO	
363.800	363.920	130	457 mm dia MS PIPELINE
363.920	364.800	870	457 mm dia MS PIPELINE
@	363.920	18	CROSSING

EXECUTIVE ENGINEER
NATIONAL HIGHWAY DIVISION
KARWAR

KARNATAKA URBAN WATER SUPPLY & DRAINAGE BOARD

LAYING OF WATER SUPPLY PIPE LINE ALONG N.H.69
(OLD NH 206) FROM MAHIME VILLAGE TO HONNAVAR

Sheet No : 17

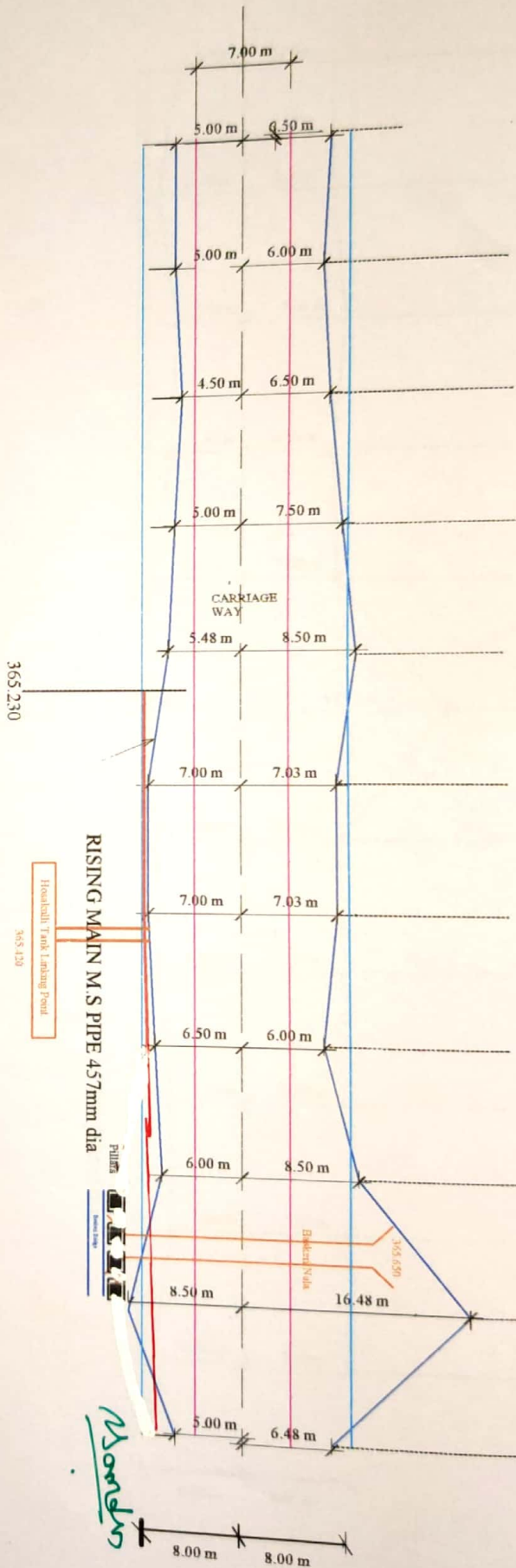
ASSISTANT EXECUTIVE ENGINEER
KUMS&DB, SUB DIVISION
KARWAR

EXECUTIVE ENGINEER
KUMS&DB, DIVISION
KARWAR

CHAINAGE (Km)

364.800 364.900 365.000 365.100 365.200 365.300 365.400 365.500 365.600 365.700 365.800

LHS
RHS



CHAINAGE FROM 364.800 KMS TO 365.800 KMS

ASSISTANT EXECUTIVE ENGINEER
NATIONAL HIGHWAY SUB-DIVISION
HONNAVAR

LEGEND

NH FROW
NH ROW WITH KACHHA DRAIN
NH CARRIAGEWAY (7.00 m)
PROPOSED PIPE LINE

CHAINAGE (Km)		LENGTH (mtr)		REMARKS
FROM	TO	LHS	RHS	
365.230	365.800		570	457 mm dia MS PIPELINE

EXECUTIVE ENGINEER
NATIONAL HIGHWAY DIVISION
KARWAR

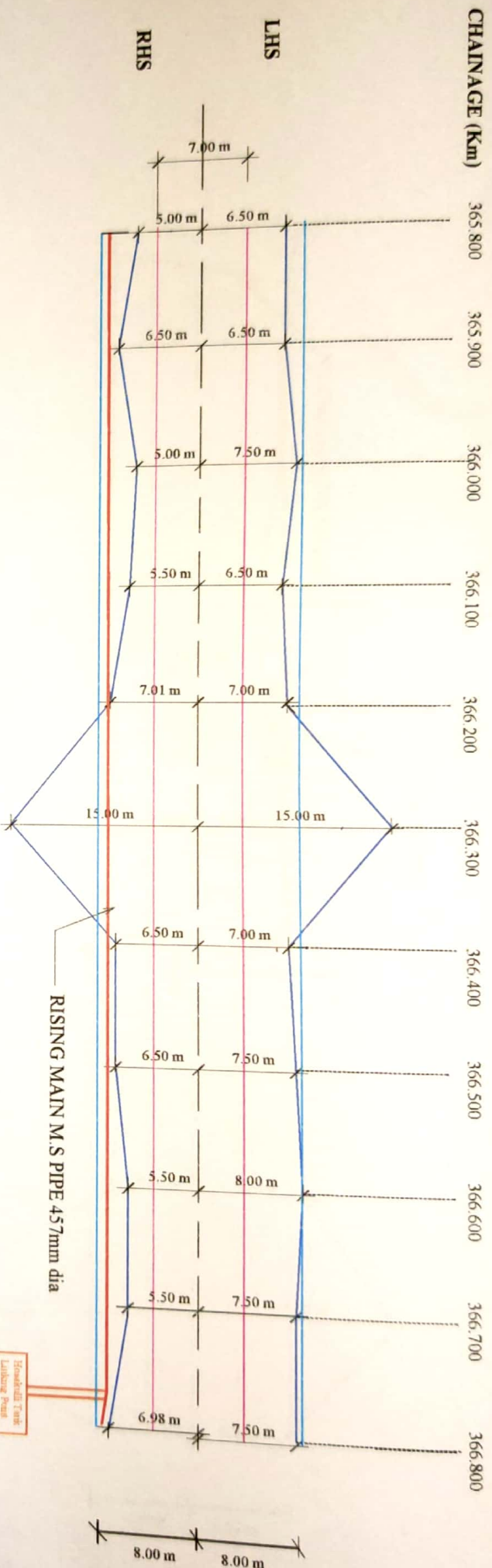
KARNATAKA URBAN WATER SUPPLY & DRAINAGE BOARD

LAYING OF WATER SUPPLY PIPE LINE ALONG NH 69
(OLD NH 206) FROM MAHIME VILLAGE TO HONNAVAR

Sheet No : 18

ASSISTANT EXECUTIVE ENGINEER
KUWS&DB, SUB DIVISION
KARWAR

EXECUTIVE ENGINEER
KUWS&DB, DIVISION
KARWAR



CHAINAGE FROM 365.800 KMS TO 366.800 KMS

ASSISTANT EXECUTIVE ENGINEER
NATIONAL HIGHWAY SUB-DIVISION
HONNAVAR

LEGEND

NH PROW
NH ROW WITH KACHHA DRAIN
NH CARRIAGEWAY (7.00 m)
PROPOSED PIPE LINE

CHAINAGE (km)		LENGTH (m)		REMARKS
FROM	TO	LHS	RHS	
365,800	366,800		1000	457 mm dia MS PIPELINE

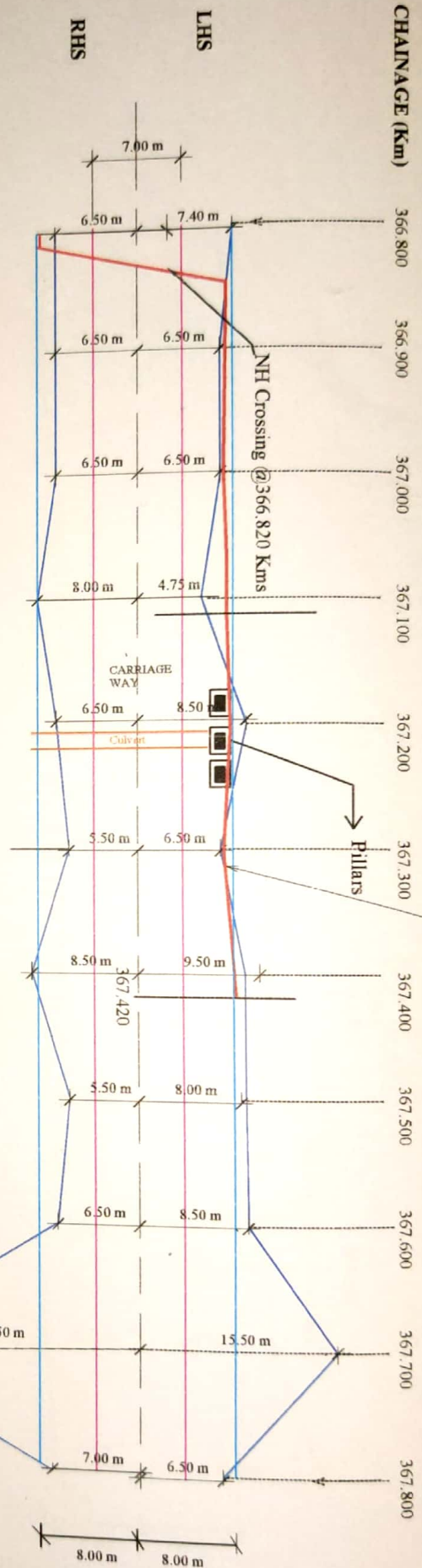
EXECUTIVE ENGINEER
NATIONAL HIGHWAY DIVISION
KARWAR

KARNATAKA URBAN WATER SUPPLY & DRAINAGE BOARD
LAYING OF WATER SUPPLY PIPE LINE ALONG N.H.69
(OLD NH 206) FROM MAHIME VILLAGE TO HONNAVAR
Sheet No : 19

ASSISTANT EXECUTIVE ENGINEER
K.U.W.S.&D.B. SUB DIVISION
KARWAR

EXECUTIVE ENGINEER
K.U.W.S.&D.B. DIVISION
KARWAR

RIISING MAIN M.S PIPE 457mm dia



CHAINAGE FROM 366.800 KMS TO 367.800 KMS

ASSISTANT EXECUTIVE ENGINEER
NATIONAL HIGHWAY SUB-DIVISION
HONNAVAR

LEGEND

—	NH PROW
—	NH ROW WITH KACHHA DRAIN
—	NH CARRIAGEWAY (7.00 m)
—	PROPOSED PIPE LINE

CHAINAGE (km)		LENGTH (m)		REMARKS
FROM	TO	LHS	RHS	
@	366.820	18		CROSSING
366.800	366.820		20	457 mm dia MS PIPELINE
366.820	367.420	600		457 mm dia MS PIPELINE

EXECUTIVE ENGINEER
NATIONAL HIGHWAY DIVISION
KARWAR

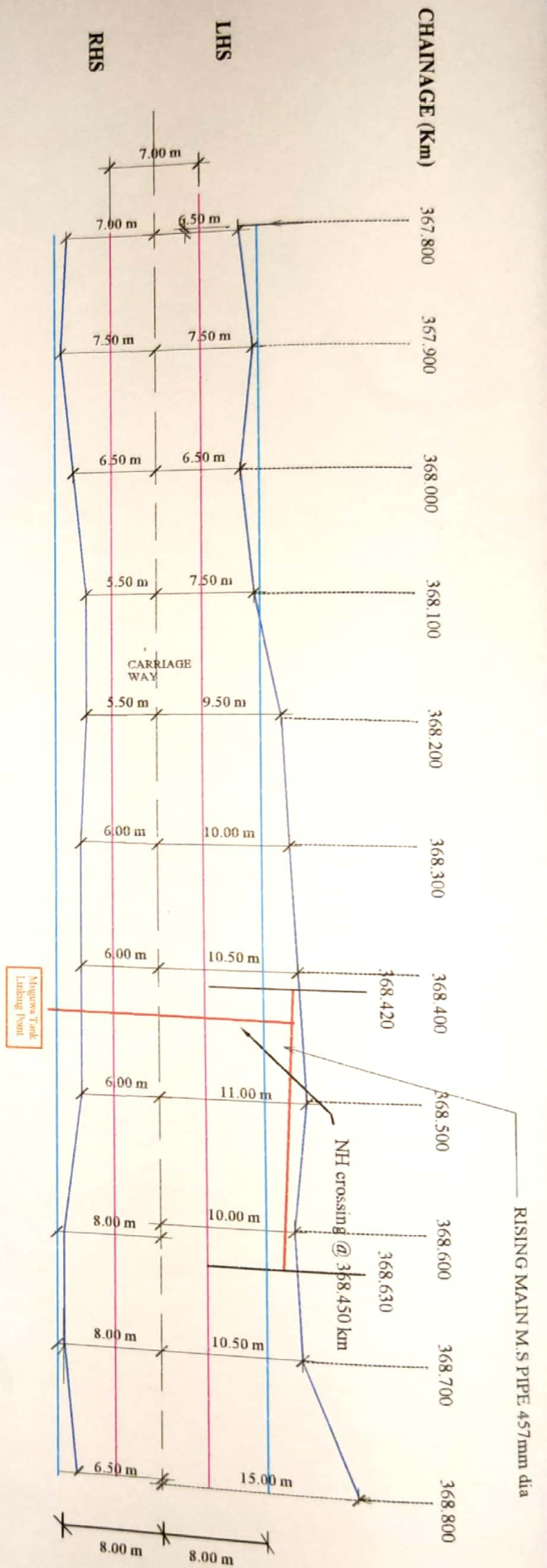
KARNATAKA URBAN WATER SUPPLY & DRAINAGE BOARD

LAYING OF WATER SUPPLY PIPE LINE ALONG N.H.69
(OLD NH 206) FROM MAHIME VILLAGE TO HONNAVAR

Sheet No : 20

ASSISTANT EXECUTIVE ENGINEER
KUVS&DB, SUB DIVISION
KARWAR

EXECUTIVE ENGINEER
KUVS&DB, DIVISION
KARWAR



CHAINAGE FROM 367.800 KMS TO 368.800 KMS

ASSISTANT EXECUTIVE ENGINEER
NATIONAL HIGHWAY SUB-DIVISION
HONNAVAR

LEGEND

—	NH PROW
—	NH ROW WITH KACHHA DRAIN
—	NH CARRIAGEWAY (7.00 m)
—	PROPOSED PIPE LINE

CHAINAGE (Km)		LENGTH (mtr)		REMARKS
FROM	TO	LHS	RHS	
368.420	368.630	210		457 mm dia MS PIPELINE
@	368.450	25		CROSSING

KARNATAKA URBAN WATER SUPPLY & DRAINAGE BOARD

LAYING OF WATER SUPPLY PIPE LINE ALONG NH 69
(OLD NH 206) FROM MAHIME VILLAGE TO HONNAVAR

Sheet No : 21

EXECUTIVE ENGINEER
NATIONAL HIGHWAY DIVISION
KARWAR

ASSISTANT EXECUTIVE ENGINEER
KUWS&DB, SUB DIVISION
KARWAR

EXECUTIVE ENGINEER
KUWS&DB, DIVISION
KARWAR

CHAINAGE (Km)

368.800

368.900

369.000

369.100

369.200

369.300

369.400

369.500

369.600

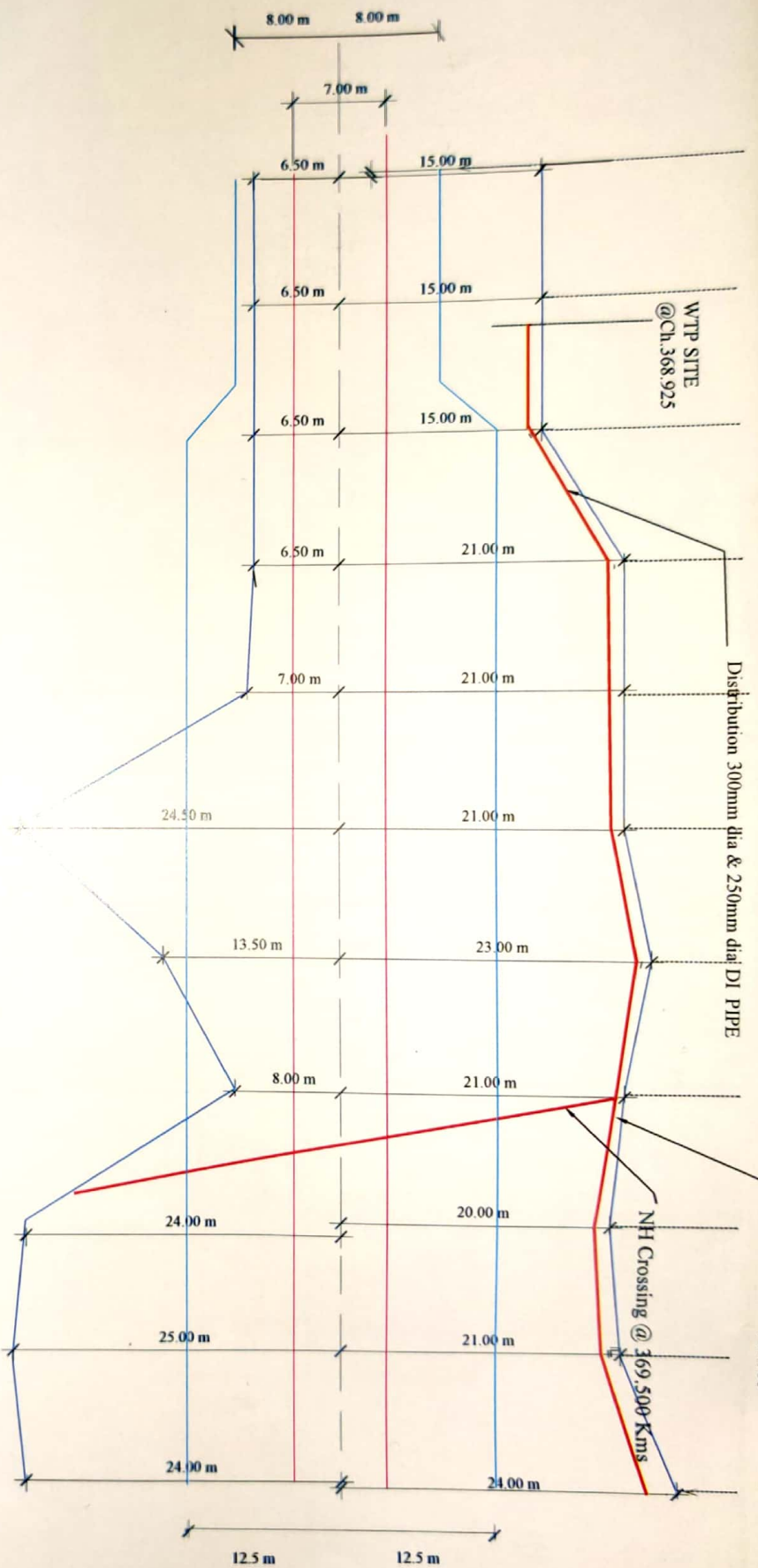
369.700

369.800

Distribution 300mm dia DI PIPE

WTP SITE
@Ch. 368.925

NH Crossing @ 369.500 Kms

LHS
RHS

CHAINAGE FROM 368.800 KMS TO 369.800 KMS

LEGEND

NH PROW

NH ROW WITH KACHHA DRAIN

NH CARRIAGEWAY (7.00 m)

PROPOSED PIPE LINE

ASSISTANT EXECUTIVE ENGINEER
NATIONAL HIGHWAY SUB-DIVISION
HONNAVAR

EXECUTIVE ENGINEER
NATIONAL HIGHWAY DIVISION
KARWAR

CHAINAGE (Km)		LENGTH (mtr)		REMARKS
FROM	TO	LHS	RHS	
368.925	369.800	875		300 mm dia Dipipeline, 250 mm DI
@	369.500	35		CROSSING

KARNATAKA URBAN WATER SUPPLY & DRAINAGE BOARD

LAYING OF WATER SUPPLY PIPE LINE ALONG N.H 69
(OLD NH 206) FROM MAHIME VILLAGE TO HONNAVAR

Sheet No : 22

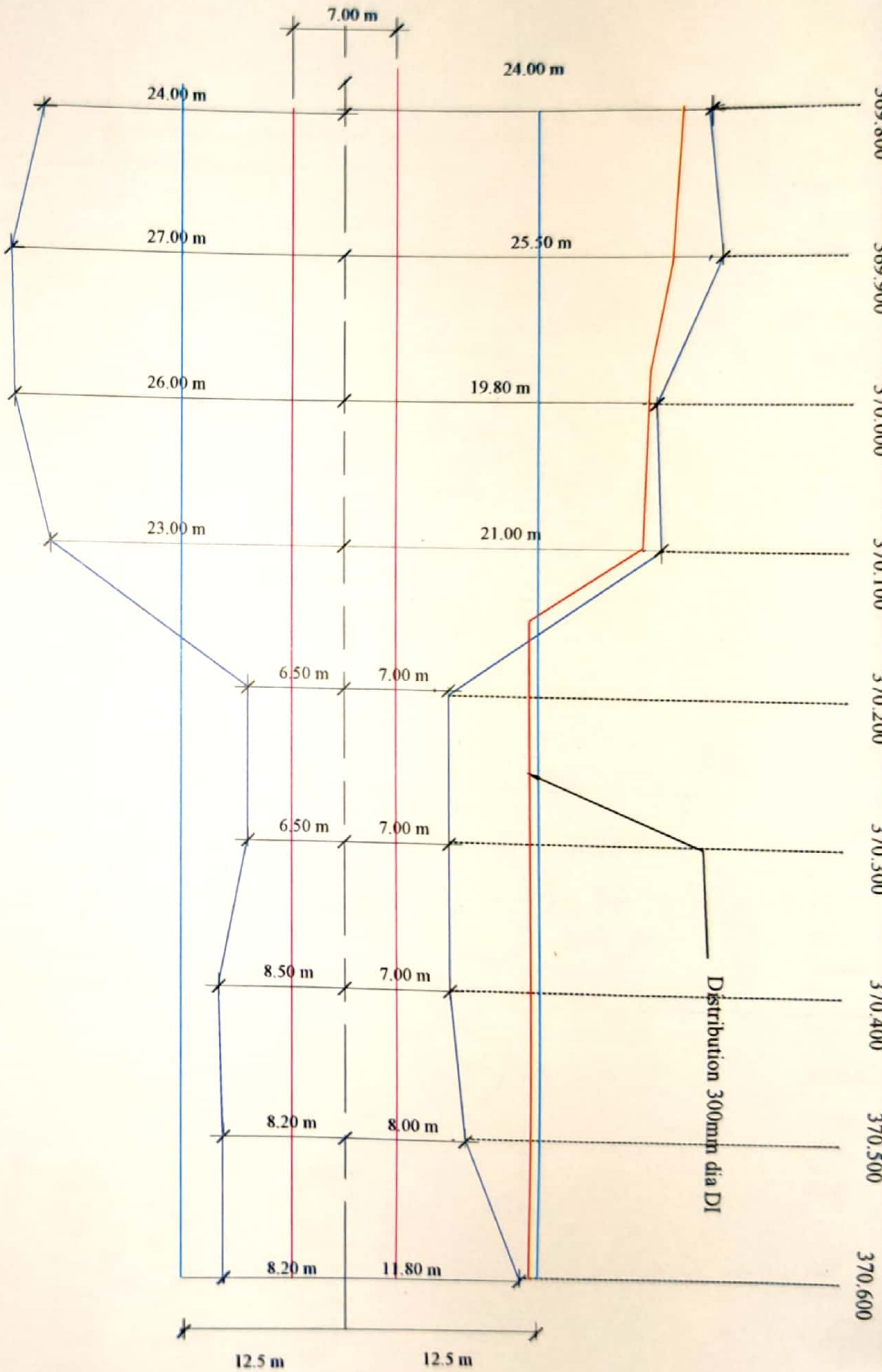
ASSISTANT EXECUTIVE ENGINEER
KUWS&DB, SUB DIVISION
KARWAR

EXECUTIVE ENGINEER
KUWS&DB, DIVISION
KARWAR

CHAINAGE (Km)

369.800 369.900 370.000 370.100 370.200 370.300 370.400 370.500 370.600

LHS
RHS



CHAINAGE FROM 369.800 KMS TO 370.600 KMS

LEGEND

ASSISTANT EXECUTIVE ENGINEER
NATIONAL HIGHWAY SUB-DIVISION
HONNAVAR

EXECUTIVE ENGINEER
NATIONAL HIGHWAY DIVISION
KARWAR

CHAINAGE (Km)		LENGTH (mtr)		REMARKS
FROM	TO	LHS	RHS	
369 800	370 600	800		300 mm dia DI pipeline

KARNATAKA URBAN WATER SUPPLY & DRAINAGE BOARD

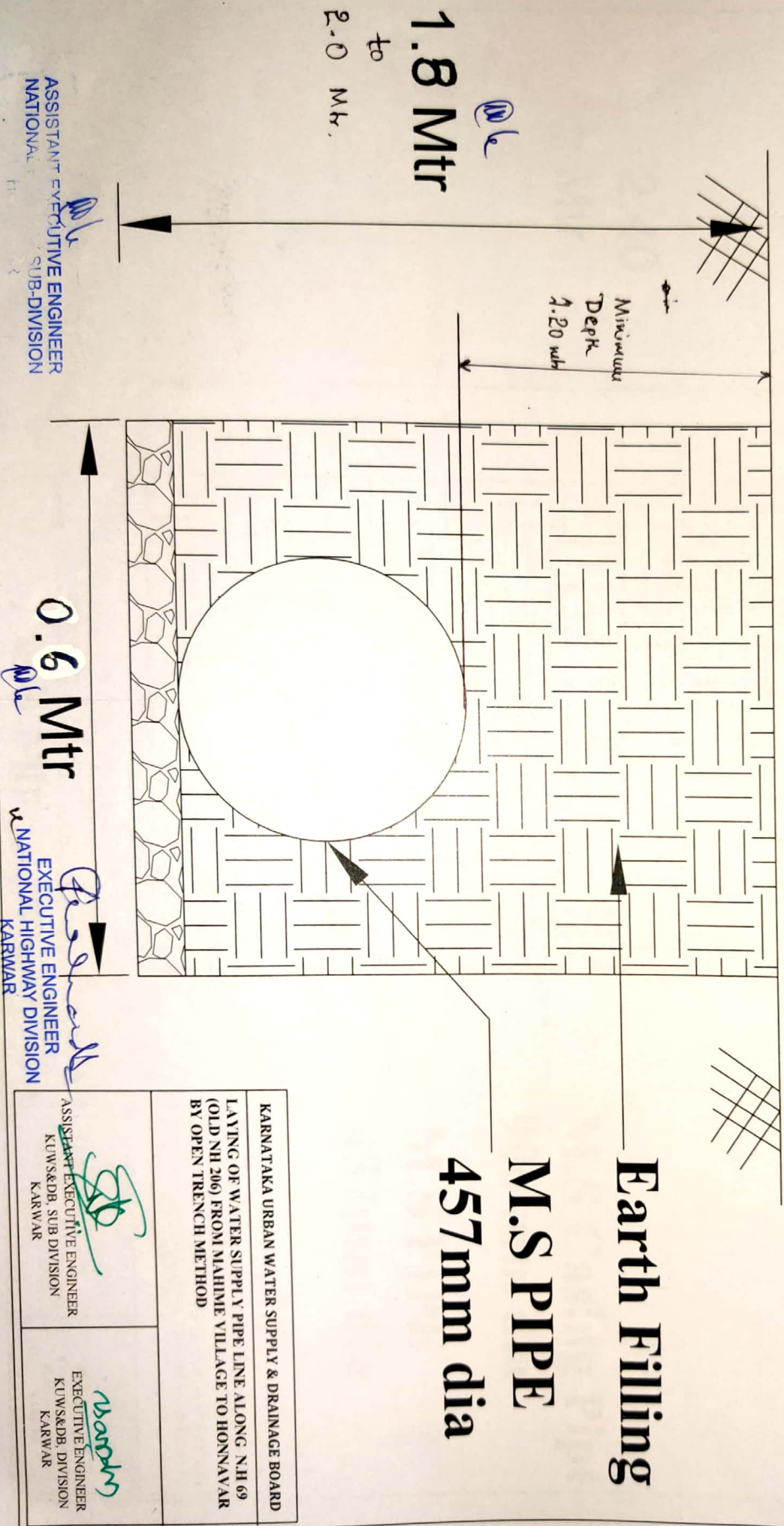
LAYING OF WATER SUPPLY PIPE LINE ALONG N.H 69
(OLD NH 206) FROM MAHIME VILLAGE TO HONNAVAR

Sheet No : 23

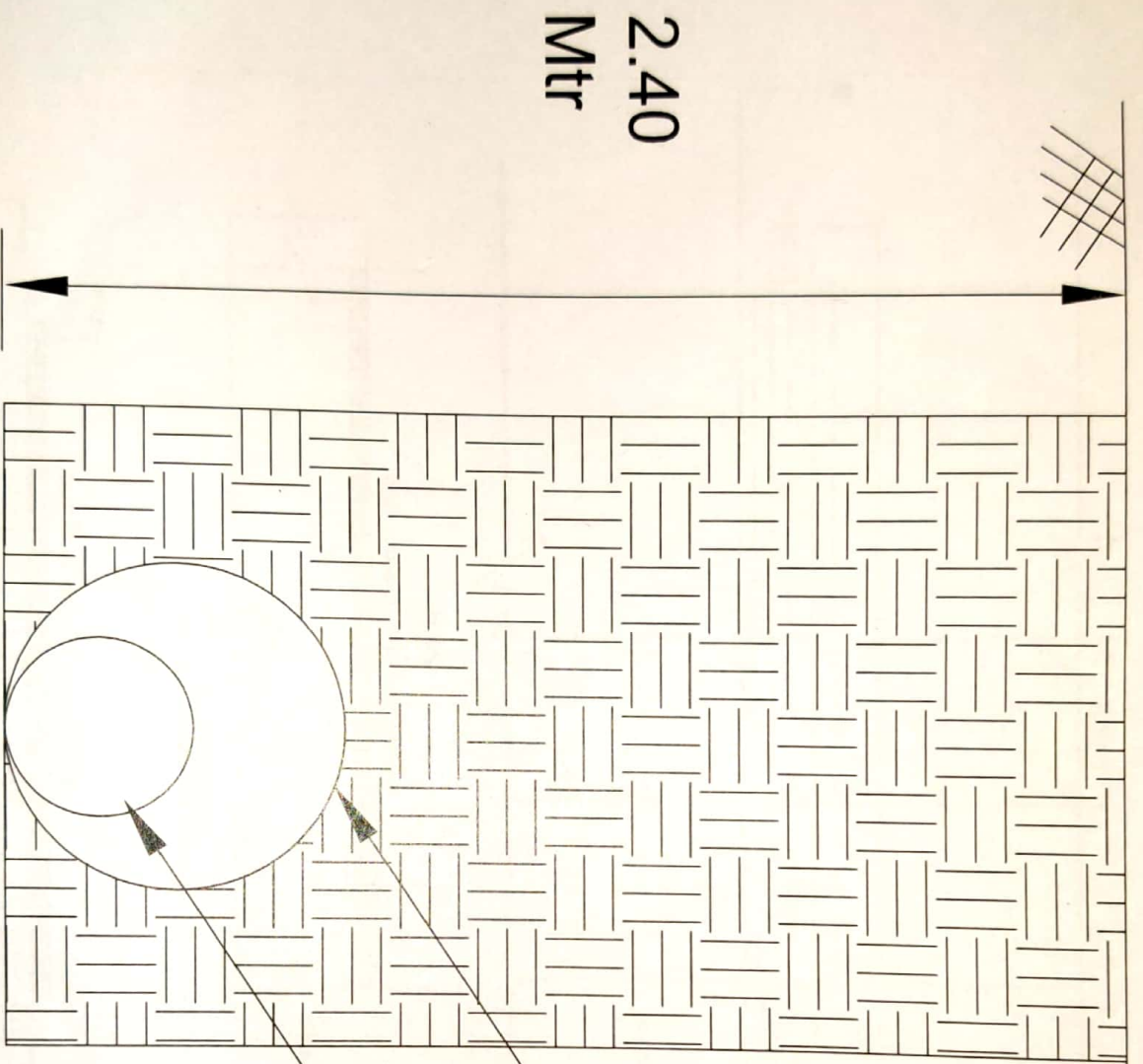
ASSISTANT EXECUTIVE ENGINEER
KUWS&DB, SUB DIVISION
KARWAR

EXECUTIVE ENGINEER
KUWS&DB, DIVISION
KARWAR

Typical C/S of Open Trench Method for MS pipe Laying



Typical C/S of Trenchless Method for MS pipe Laying



2.40
Mtr

**M.S Casing Pipe
900 mm dia**

**M.S PIPE
457mm dia**

KARNATAKA URBAN WATER SUPPLY & DRAINAGE BOARD
LAYING OF WATER SUPPLY PIPE LINE ACROSS N.H.69
(OLD NH 206) FROM MAHIME VILLAGE TO HONNAVAR
BY TRENCHLESS METHOD

ASSISTANT EXECUTIVE ENGINEER
NATIONAL HIGHWAY SUB-DIVISION
HONNAVAR

0.6 Mtr

EXECUTIVE ENGINEER
NATIONAL HIGHWAY DIVISION
KARWAR

ASSISTANT EXECUTIVE ENGINEER K.U.W.S.&D.B. SUB DIVISION KARWAR	EXECUTIVE ENGINEER K.U.W.S.&D.B. DIVISION KARWAR
--	--