



# FUJI SILVERTECH

Presentation For MORTH



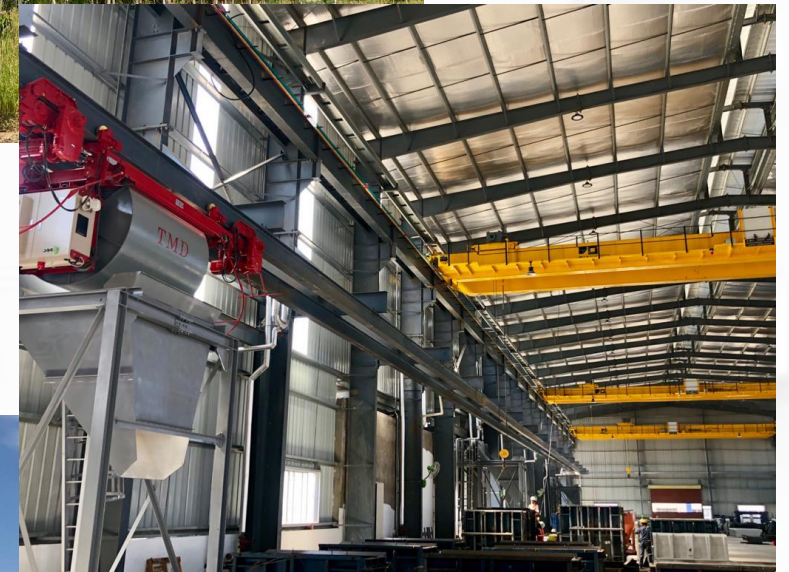
# PRECAST CONCRETE PLANT AND QUALITY CONTROL



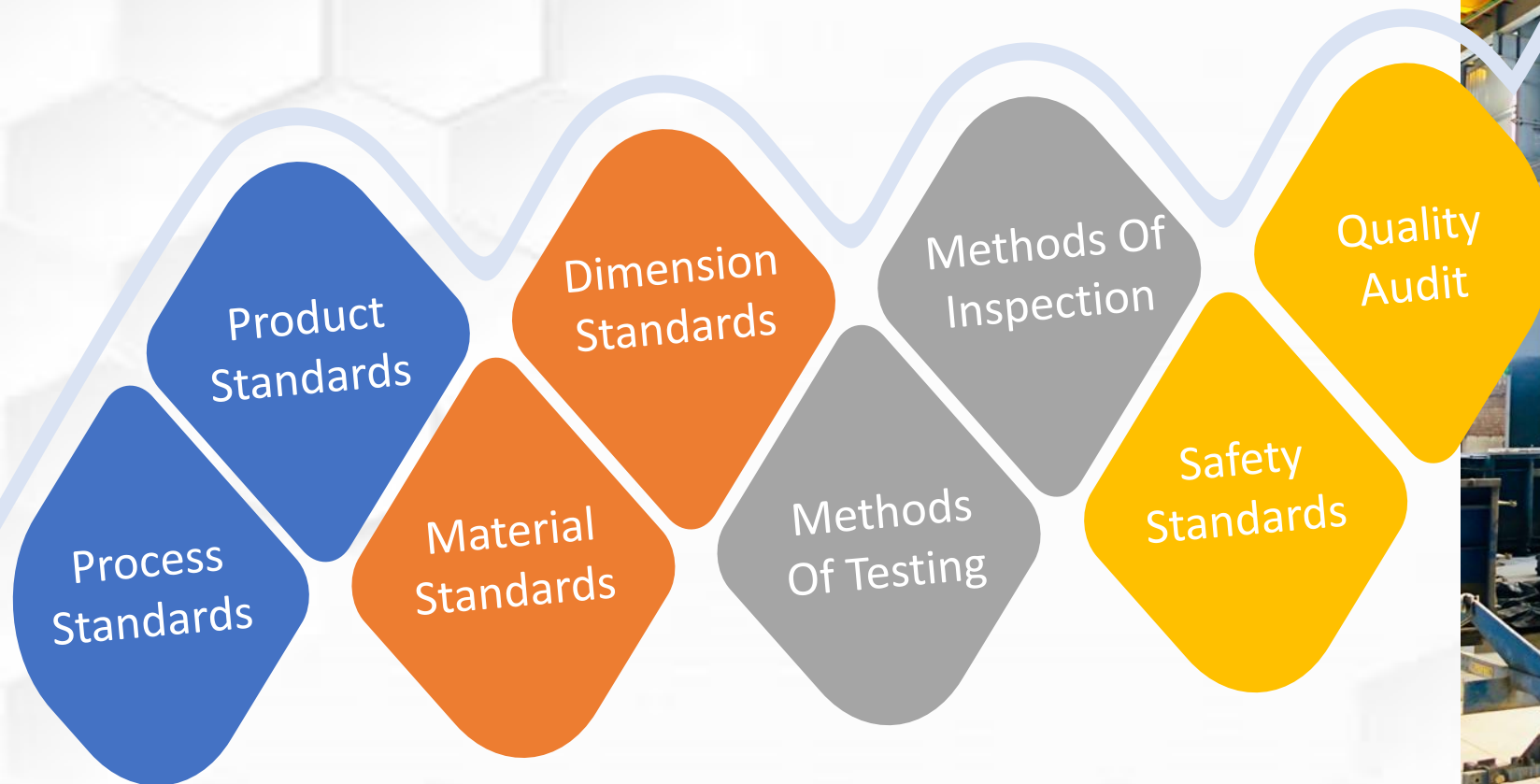


# PRECAST FACTORY SET UP

- FULLY AUTOMATIC BATCHING PLANT
- MECHANICAL HANDLING OF FINISHED PRODUCTS
- STEAM CURING
- BAR BENDING MACHINE
- R.O. WATER IF TDS IS  $> 200$
- STACKING YARD
- FULLY EQUIPED QUALITY CONTROL LABORATORY



# FACTORY STANDARDS





# MANDATORY CERTIFICATIONS FOR PRECAST FACTORY

Bureau Veritas Certification



## FUJI SILVERTECH CONCRETE PRIVATE LIMITED



**HEAD OFFICE:** 4TH FLOOR, HOUSE NO. 5, MAGNET CORPORATE PARK, NEAR SOLA FLYOVER, SG ROAD, THALTEJ, AHMEDABAD – 380 054, GUJARAT, INDIA

This is a multi-site certificate, additional site(s) are listed on the next page(s)  
Bureau Veritas Certification Holding SAS – UK Branch certifies that the Management System of the above organization has been audited and found to be in accordance with the requirements of the Management System standards detailed below.

Standards

**ISO 9001:2015, ISO 14001:2015 & ISO 45001:2018**

Scope of certification

**DESIGN, MANUFACTURING AND DISPATCH OF PRECAST CONCRETE INFRASTRUCTURE PRODUCTS**

Original cycle start date: **06 April 2021**  
Expiry date of previous cycle: **Not Applicable**  
Certification Audit date: **30 January 2021**  
Certification cycle start date: **06 April 2021**

Subject to the continued satisfactory operation of the organization's Management System, this certificate expires on: **05 April 2024**

Certificate No. **IND.21.1914/IM/U** Version : 1 Revision date: **06 April 2021**

*Jagdeesh N. Manian*  
Signed on behalf of BVCH SAS – UK Branch  
Jagdeesh N. MANIAN  
Head – CERTIFICATION, South Asia  
Commodities, Industry & Facilities Division



Certification body address: 5th Floor, 66 Prescot Street, London, E1 8HG, United Kingdom.  
Local office: Bureau Veritas (India) Private Limited (Certification Business)  
72 Business Park, Marol Industrial Area, MIDC Cross Road "C", Andheri (East), Mumbai – 400 093, India

Further clarifications regarding the scope of this certificate and the applicability of the management system requirements may be obtained by consulting the organization.  
To check this certificate validity please call +91 22 6274 2000.

Pg 1 of 2

- ISO 9001 Quality management
- ISO 14001 Environmental management system
- ISO 45001 Occupational health and safety



Bureau Veritas Certification

## FUJI SILVERTECH CONCRETE PRIVATE LIMITED



Standards

**ISO 9001:2015, ISO 14001:2015 & ISO 45001:2018**

SITE	ADDRESS	SCOPE
HEAD OFFICE	4TH FLOOR, HOUSE NO. 5, MAGNET CORPORATE PARK, NEAR SOLA FLYOVER, SG HIGHWAY, THALTEJ, AHMEDABAD – 380 054, GUJARAT, INDIA.	DESIGN OF PRECAST CONCRETE INFRASTRUCTURE PRODUCTS
FACTORY	SURVEY NO 345-346, BAGODARA-VIRAMGAM STATE HIGHWAY, BAGODARA, AHMEDABAD – 382 230, GUJARAT, INDIA.	MANUFACTURING AND DISPATCH OF PRECAST CONCRETE INFRASTRUCTURE PRODUCTS

Certificate No. **IND.21.1914/IM/U** Version: 1 Revision date: **06 April 2021**

*Jagdeesh N. Manian*  
Signed on behalf of BVCH SAS UK Branch  
Jagdeesh N. MANIAN  
Head – CERTIFICATION, South Asia  
Commodities, Industry & Facilities Division



Certification body address: 5th Floor, 66 Prescot Street, London, E1 8HG, United Kingdom.  
Local office: Bureau Veritas (India) Private Limited (Certification Business)  
72 Business Park, Marol Industrial Area, MIDC Cross Road "C", Andheri (East), Mumbai – 400 093, India

Further clarifications regarding the scope of this certificate and the applicability of the management system requirements may be obtained by consulting the organization.  
To check this certificate validity please call +91 22 6274 2000.

Pg 2 of 2



# QUALITY CONTROL

The background of the slide is a photograph of numerous concrete blocks stacked in neat rows. The blocks are light gray and have a rectangular shape with a central rectangular cutout. They are arranged in a perspective that recedes into the distance. The top of the image is partially covered by a blue banner.

## SPECIFICATION OF RAW MATERIAL

- CEMENT
- FINE AGGREGATE
- COARSE AGGREGATE
- FILLER
- ADMIXTURES
- WATER



# QUALITY CONTROL

## IN-PROCESS MATERIAL SPECIFICATIONS

- CONCRETE
- REINFORCEMENT BARS
- REINFORCEMENT CAGE
- LIFTING INSERTS
- ROTATION INSERTS
- SPACERS
- COUPLERS
- EMBEDDED PLATES
- CORBELS
- WALL SHOES
- LOOP BOXES
- ANCHOR BOLTS



# QUALITY CONTROL

## FINAL PRODUCT SPECIFICATIONS

- DRAINS
- CHAMBERS
- BOX CULVERTS
- RETAINING WALL
- WATER TANKS
- WALLS
- COLUMNS
- BEAMS
- SLABS
- SEPTIC TANKS
- MANHOLES
- OTHER



# BAR CODING

- PRODUCT TYPE
- PRODUCT SIZE
- PRODUCT CODE
- PRODUCT WEIGHT
- STEEL WEIGHT
- PRODUCT DESIGN CODE
- PRODUCT DESIGN ENGINEER
- PRODUCT MOULD CODE
- PLANT DETAILS WHERE PRODUCT MANUFACTURED
- SHIFT DETAIL WHEN PRODUCT MANUFACTURED
- DATE OF CASTING
- DATE OF STORAGE
- DATE OF DISPATCH
- PRODUCTION ENGINEER
- QUALITY ENGINEER
- QUALITY MANAGER



# ESTIMATED COST FOR PRECAST FACTORY

S.N	Description	Total Cost
<b>CIVIL WORK AND PRE-ENGINEERED BUILDING</b>		
1	Land (Sq Mtr) including , aread grading and boundary wall	45,00,00,000
2	Concrete and Rebar Plant (Civil Work)	6,00,00,000
	Pre Engineered Building (Concrete & Rebar Plant)	7,50,00,000
3	Batching Plant civil foundation, Raw material storage, and other Utility	1,75,00,000
4	Internal RCC Road	3,50,00,000
5	RCC Finish Stockyard and loading area	10,00,00,000
6	Water tank and pump room and external water supply line	1,50,00,000
7	Storm water and sewer	1,00,00,000
8	Admin. Building (civil foundation, PEB, walls, floor, false celing, toilets, interior and furniture)	1,50,00,000
9	Canteen Building, store for daily consumable (civil foundation, walls, floor, interior and furniture)	1,00,00,000
10	Quality Lab. And material testing Building (civil foundation, water tank for testing,walls, floor, interior)	1,50,00,000
11	Utility Building D.G set, Main panel, metering unit, LDO store, DG shed, (civil foundation, walls, floor)	1,50,00,000
12	Fire Fighting (External and Internal)	1,50,00,000
13	Electrical work (External and Internal, Panel, CCTV, Computer wiring, fire alarm)	4,50,00,000
16	Structural consultancy charges and lasoning for getting connection	90,00,000
<b>Total A</b>		<b>88,65,00,000</b>



# ESTIMATED COST FOR PRECAST FACTORY

MACHINERY & EQUIPMENT SUMMARY		
1	Overhead EOT & Gantry Cranes	4,50,00,000
3	Rebar Machinery	3,50,00,000
4	Handling & Demoulding Equipments	1,50,00,000
5	Automated production line, TMD	5,00,00,000
6	Forklifts, Hydra and Loading Equipments	2,50,00,000
7	DG set with Sync. Panel	75,00,000
8	Boilers (incl. Piping Cost)	1,75,00,000
9	Compressor	70,00,000
10	Batching Plant	2,60,00,000
11	Lab Equipments	80,00,000
12	Moulds	25,00,00,000
13	RO + ETP / STP	25,00,000
14	L Shape Cranes / Measurement machine & other equipments	2,50,00,000
Total B		51,35,00,000
	Total of Civil and machinery	1,40,00,00,000



# Product Cost Analysis

<b>Material Cost</b>	<b>Cost / CUM</b>
Concrete (M-50)	6,700
Rebar	8,000
Curing Cost	1,470
Inserts / Clamps / Other Consumables	1,300
Handling and Loading Cost	750
<b>Total Material Cost</b>	<b>18,220</b>

Overhead Cost (20%)	3,644
Mould Cost (15%)	1,822
Packaging Cost	729
Profit (10%)	2,441
<b>Total Product Cost / CUM</b>	<b>26,856</b>



# GAPS BETWEEN IS CODES AND INTERNATIONAL CODES FOR PRECAST

- Reduction in cover requirement for precast
- Tack welding of reinforcement bar
- Higher strength and performance grade of concrete
- Allowing use of 4 mm and 6 mm wire mesh and bars for precast.
- Reduction in element thickness is rational in precast.





# RECOMMENDATIONS TO MORTH

1

Precast Policy  
Need To Be Issued  
In Line With  
International  
Practices To Bridge  
The Gap Between  
IS Codes And  
International  
Codes



2

Standardization Of  
Precast Products  
To Take Advantage  
Of Volumes



3

Set Up Quality  
Standards For  
Plant Setup And  
Precast Products





# RECOMMENDATIONS TO MORTH

4

Increase The  
Catchment  
Area Of Precast  
Factory From  
100 Km To 500  
Km To Make  
The Investment  
Viable



5

Reduction In GST  
On Precast  
Products  
(Presently It Is  
18%)





# Loading/Unloading





# Stacking



# Installation of Precast Drain





# Installed Drain





# Precast RCC Boxes





# Laying of Precast RCC boxes





# Unloading of Retaining Wall





# Installed Retaining Wall



# Contact Us

*We will be glad to assist you with best of our Services, always...*



Mr. Anurag Sachan  
(Director)



+91 079 - 40210000



[anuragsachan@fujisilverttech.com](mailto:anuragsachan@fujisilverttech.com)



[www.fujisilverttech.com](http://www.fujisilverttech.com)



**Fuji Silverttech Concrete Pvt. Ltd.**

4th floor, House No. 5, Magnet Corporate Park, Nr Sola  
Flyover, SG Road Thaltej, Ahmedabad – 380054 Gujarat  
INDIA

## Thank you!

