

**Amendment No. 2 (5<sup>th</sup> December 2018)**  
**To**  
**AIS-140: Intelligent Transportation Systems (ITS) - Requirements for Public**  
**Transport Vehicle Operation**

**1. Page 3, Clause No 2.2.1,**

Substitute following text for existing text:

**Device Approval:** Approval provided at Device level for compliance to this standard. These approved devices can be fitted / retro-fitted by manufacturer/ dealer/ permit holder/system integrator in any vehicle model provided it shall meet installation requirements as mentioned in Clause No. 5 of this standard.

**2. Page 4 , First paragraph**

Substitute following text for existing text:

Table below (Table 4A) contains the listing of fields that the vehicle tracking devices would be required to send to the Backend Control Centre. The first 3 fields (Start character, Header for VLT with Emergency Buttons and Vendor ID, who has supplied the device) must be fixed in position as well as format (Header part of frame). Rest all other fields are required to be present in the location data sent by the devices to the backend, but can be in any sequence and with any separator between fields. The data value can be either in American Standard Code for Information Interchange (ASCII) or in HEX format. Device must transmit the Login message whenever it establishes (re-establishes after disconnection) its connectivity with Server with the specified fields. Login Message will carry following information:

**3. Page 5, Clause 3.1.1.1, Sub clause ‘a’**

Substitute the following text for the existing text:

- a.** Device shall be capable for operating in L and/or S band and include support for NAVIC/IRNSS (Indian Regional Navigation Satellite System) for devices installed on vehicles on or after 1st April 2019. However VLT devices shall be compliant as per other GNSS constellation in the interim period.

**4. Page 16, Clause 5.0**

Substitute following text for existing text:

**CONSTRUCTION AND INSTALLATION**

**5. Page 16, Clause 5.1**

Substitute the following test for the existing text:

**Requirements on vehicle interface for VLT with Emergency Button**

(This requirement is only a guideline for fitment and shall not be checked during component approval or on vehicle)

Connector for Power

The requirements for interface shall be as agreed between vehicle manufacturer and device manufacturer

**6. Page 16, Clause 5.2**

Substitute the following test for the existing text:

**Requirement of Emergency System**

(To be verified on component level)

Emergency button shall be one time press type. Separate release action from authorized server shall be required to bring back the emergency button to normal mode or clear emergency flag.

**7. Page 16, Clause 5.3**

Substitute the following text for the existing text:

**Physical Mounting**

(This requirement is only a guideline for fitment and shall not be checked during component approval or on vehicle)

The VLT system shall be mounted in a suitable location such a way that it is not easily accessible /exposed to passengers.

This requirement shall not be applicable in case of combined systems VLT with HMI (Human Machine Interface) display in front of driver.

Emergency button(s) shall be fitted in such a way that every passenger including driver shall be able to access the Emergency button(s).

Passenger Car shall have at least one emergency buttons on each passenger row easily accessible by each of the passenger. There shall also be one dedicated emergency button for the driver row.

Passenger Transport bus shall have emergency buttons at locations easily visible & accessible to all the passengers such as every 2 meters on both the sides on passenger seating area. For seats reserved for ladies there shall be a dedicated panic button for each row.

It shall be permissible to have a single emergency button for two successive ladies' rows on both sides of the vehicle provided each lady passenger in either rows are able to reach and operate the emergency button.

In case of passenger transport bus which has a glass window covered between two pillars having pitch 2m or more, the emergency buttons shall be provided on each pillar

National Permit Trucks, shall have one dedicated emergency button for the driver row.

**8. Page 17, Clause 5.4**

Substitute the following test for the existing text:

**Power Supply**

(The requirements related to vehicle are only a guideline for fitment and shall not be checked during component approval or on vehicle)

The vehicle tracking device will be installed on vehicles in which the power supply voltage from vehicle battery is widely varying (12V, 24V etc.) and also the power supply is not as stable as that in case of fixed locations, especially during engine start-up and braking when the voltage can fall to as low as 9V. Typically electronic devices are very sensitive to power surges and spikes, and equipment may fail if they do not receive stable power supply. The devices will need to have a resilient power supply unit that can withstand such fluctuations and the devices also need to have power backup so that they continue to function for some duration when the vehicle battery is not functional or is disconnected from the devices.

Vehicle power interface shall have

- One common ground linked to vehicle chassis
- One permanent power Supply (12/24V) connected to the vehicle battery (+Vbat).
- One non-permanent power line (12/24V) connect to the battery after ignition (IGN).

**9. Page 17, Clause No 6.1, 6.1.1, 6.1.2**

Delete these clauses and renumber subsequent clauses.

**10. Page 18, Clause No 6.2.1.3**

Substitute following text for existing text:

The system shall transmit Emergency request information to one IP and PVT information to other IP of backend Control Center at user configurable frequency (minimum 5 seconds) via GSM/Cellular

**11. Page 18**

Add following new clause 6.2.1.6 and 6.2.1.7 after clause 6.2.1.5 :

- 6.2.1.6 System shall communicate to control center on the occurrence of the alerts captured in Communication Protocol Section 4.
- 6.2.1.7 When Emergency Button is pressed, emergency request message shall be sent from the system and received at the control center.

**12. Page 31 ,Clause No 7.0**

Add Below Text at the end of first paragraph

The Communication from Device to backend should happen on a Secure channel over TCP/IP protocol preferably on socket based connections where sessions are managed to send commands over the same connection to the device and are authenticated, identifiable, so as to prevent spoofing on IMEI/ Unique ID.

**13. Page 33**

Add following new clause 8.0 after clause 7.0:

**8.0 CODE OF PRACTICE for Implementation of Vehicle Location Tracking (VLT) Device, Emergency Button(s) and Command and Control Centres**

This Code of Practice for AIS-140 has been formulated for facilitating smooth Implementation of Vehicle Location Tracking (VLT) Device, Emergency Button(s) and Command and Control Centres for the guidance of the stakeholders concerned.

**8.1 General**

- a. The VLT device manufacturers will get their devices tested and certified from the testing agencies referred to in rule 126 of the CMVR for compliance to the rule 125 H of CMVR
- b. The Backend System shall mean the backend Command and Control Centre set up/ authorized by State/UT or VLT manufacturers, providing interface to various stakeholders/systems such as State emergency response centre, the transport department or Regional Transport Offices, Ministry of Road Transport and Highways and its designated agency, Vahan (or any other State/UT system used for registration of vehicles and/or issuance of permits), VLT device manufacturers and their authorised dealers, testing agencies, permit holders, etc. In the absence of State/UT backend system, the registration, activation, health check and alert updates of VLT devices shall be through a common layer for updation in Vahan.

The details of each VLT device (VLT device manufacturer code, device serial number, IMEI number, IccID number and other details as notified by the Central Government/State Government) shall be uploaded on the Vahan directly or through backend system by the VLT device manufacturer using its secure authenticated access.

The VLT device manufacturers or their authorised dealers shall install the VLT devices in vehicles and register/activate the devices along with details

of vehicle and permit holder on the corresponding backend systems in real-time as per the process set out below.

The backend system/common layer will update the details of device in the Vahan system against the respective vehicle record at the time of installation and registration/activation of VLT device.

- c. The VLT device manufacturers or their authorised dealers, at the time of installation of VLT device in vehicles, shall configure the IP address and SMS gateway details in the device for sending emergency alerts to the emergency response system of the State/UT concerned.
- d. The VLT device manufacturers or their authorised dealers, at the time of installation of VLT device in vehicles, shall configure the configuration parameters mentioned in AIS-140 in the device such as IP address and SMS gateway details for sending required data to the backend system.
- e. The VLT device manufacturers shall ensure that a control mechanism is established for the secure data transfer from VLT to the backend system and that only the authorized devices transfer data to the backend system. The VLT device manufacturers shall also ensure that the mechanism for authenticating the vehicle owner and devices is followed as per the protocol specified in AIS-140 or such additional requirements as specified by the States/UTs. Authentication of vehicle shall be done through an OTP sent on vehicle owner's mobile number from the corresponding backend system.
- f. In case of press of an emergency button, the VLT device will send data directly to the emergency response system of the respective State/UT. In addition, the backend system will send the alert to the respective permit holder, as decided by the State/UT.
- g. VLT device manufacturers shall get their devices tested for conformity of production every year from the date of first certification, from the testing agencies referred to in rule 126 of the CMVR.
- h. VLT device manufacturers shall get their backend systems certified for the States/UTs from the testing agencies referred to in rule 126 of the CMVR/STQC/NIC.
- i. The VLT device manufacturers or their authorised dealers, at the time of installation of VLT devices in vehicles, shall configure the VLT device to send a secure authenticated activation message directly to the State/UT backend system/common layer as per the details provided in this section 8
- j. The VLT device manufacturers shall ensure that the Health Check parameters are configured in the VLT device to send Health Check messages, on request from the State/UT backend system/common layer, to the respective backend system through SMS as per reference protocol mentioned in this section 8
- k. VLT device manufacturers or their authorised dealers shall provide comprehensive warranty/maintenance support for the VLT device and facilitate cellular connectivity in accordance with the guidelines issued by

central government vide Motor Vehicles (Vehicle Location Tracking Device and Emergency Button) Order, 2018 as amended from time to time.

- l. The testing agencies will verify the conformity of production for the VLT devices as prescribed in section 8.5.

## **8.2 Installation, Registration, Activation and Service Process for VLT Device**

- a. VLT device manufacturers or their authorised dealers shall install VLT devices on permit holder's vehicles (only tested and approved model).
- b. VLT device manufacturers shall ensure necessary uploading/integration of the installation/activation data to the backend system/Vahan.
- c. In case of any problem in updating Vahan, it will be VLT device manufacturer's responsibility to resolve the same.
- d. VLT device manufacturers or their authorised dealers will also provide necessary print of installation/activation report to permit holder from the respective backend system.
- e. Regional Transport Offices shall be able to verify the registration/activation/functional status of VLT device in the Vahan/corresponding backend system at the time of fitness testing.
- f. The permit holder will have option to check the installation and device working status in the Vahan.
- g. The VLT device manufacture may offer value added services, in addition to the mandatory performance requirements to the permit holders as per the mutual agreement between them. Mandatory performance requirements shall mean the following:
  - i. Uploading device data in Vahan
  - ii. Updating registration and activation data of VLT device
  - iii. Sending device health status to the backend system
  - iv. Sending emergency alerts to the corresponding State/UT emergency response system
  - v. Sending over speeding alerts to the backend system
  - vi. Other performance requirements as per AIS 140 and as notified by central government vide Motor Vehicles (Vehicle Location Tracking Device and Emergency Button) Order, 2018 as amended from time to time.

- h. The VLT device manufacturers may create their own system to monitor their supplied devices, emergency button/s & connectivity working / non-working status for managing warrantee / AMC and Cellular services.
- i. The VLT device manufacturers or their dealers will update the SIM numbers and their validity/renewal details in the backend system.

### **8.3 VLT Device Manufacturers Backend Application/System Requirements**

In case VLT device manufacturer offers to provide its backend system for State/UT, the same will need to meet the following requirements, in addition to those specified in Clause 7 of AIS 140:

- a) The application will provide the ability to locate a vehicle at a given time.
- b) Facility to track defined vs. actual movement of vehicles, capture deviations if any. (For vehicles where scheduled movement can be defined on GIS map)
- c) The application should provide ability to track vehicle location on map. The map engine and data should comply with applicable regulations including guidelines as set out by Survey of India from time to time.
- d) Facility for users to access and view position / location information on GIS maps near real-time through web interface with historic data displayed on maps.
- e) Facility for providing current information location on demand.
- f) Facility for playing back the recorded details of the vehicle movement along the authorized route (where applicable).
- g) Provide facility of alert generation
  - i. Ability to define new alerts on specific events
  - ii. From the on-board devices in case of tampering
  - iii. Speed exceeds the permissible limit
  - iv. Vehicle moves out of its designated route or area
  - v. Data feed not received from the on-board device
- h) Provide facility to define rules for alerts/ notification and their delivery mode like SMS, email, pop-up etc.
- i) Management of notifications to various stakeholders by way of email or SMS e.g. permit holders, RTO about device not working, over-speed etc.
- j) Notification to the permit-holder through SMS in case any device stops functioning/sending data to the application.

- k) Capability to update the on-board devices' firmware from the backend.
- l) Capability to configure on-board device parameters from the backend.
- m) The tracking data will be kept live in the system for at least 90 days. Utilities will be provided to support archive and restore functions for older data. Alerts/reporting shall be available for one year in the backend.
- n) The backend will store VTS time-related data at the same resolution as received in the live application. The archived data after 90 days can also be restored using utilities provided.
- o) From a security perspective, the devices will not communicate to any IP address located outside India whether it be the manufacturer's application or for purposes of configuration or firmware updates.
- p) Firmware of the device needs to be available for auditing to notified testing agencies. Firmware binary should be made available with version matching one in the device as well as binary size & modification timestamp and/ or checksum should match for the binary provided and one installed on device. Backend System should be able to remotely read the existing version number of the firmware via an OTA configuration read command. A new version of the firmware should be pushed over the air from the VLT manufacturer's application. This shall be verified by the backend system remotely reading the new version number of the firmware in the device via and OTA configuration read command.
- q) The device will communicate only to whitelisted set of IP addresses located in India and will receive communication and commands also from whitelisted set of IP addresses located in India.
- r) The application and all key components like device management, firmware control, GIS map shall be hosted at a data centre/ cloud in India and it will be available for auditing by regulatory agencies.
- s) The system shall provide > 99% availability and adhere to Infrastructure Security, Vulnerability Assessment and Penetration Testing guidelines as set out by Ministry of Electronics, Information and Technology, GoI.
- t) No data should flow out of the country under any circumstances in compliance with applicable laws/regulations/guidelines.
- u) The common layer shall be got tested from the testing agencies specified in CMVR Rule 126/STQC/NIC for the following minimum functionalities:
  - i. Registration and activation of the device(s) fitted on the vehicle, including the details of vehicle registration number, engine number, chassis number, vehicle make and model, device make and model, and connectivity details (telecom service provider's name, ICCid, SIM Nos., IMSI, date of validity, etc.).

- ii. Publish VLT device details in the Vahan/ any other State/UT system used for registration of vehicles and/or issuance of permits
- iii. Re-registration/re-activation of the device(s) fitted on the vehicle in case of any change in device or telecom service provider, etc.
- iv. Periodic health check of the device(s) fitted on the vehicle through SMS, as per section 8.4.
- v. Receiving alerts from VLT devices in case of defined deviations by vehicle such as over-speeding, etc. Publish alerts and health check received from VLT device in the Vahan/ any other State/UT system used for registration of vehicles and/or issuance of permits.
- vi. Provide interface to Vahan, respective State/UTs, RTOs, testing agencies, VLT device manufacturer's and their dealers.

#### **8.4 Activation message and Health Check Message Protocol**

The protocols for activation message and health check message are given below. Device shall send the activation and health check messages on request as specified below directly to the backend system (i.e. backend Command and Control Centre set up/ authorized by State/UT or a Common Layer system providing interface to VLT device manufacturers' backend applications).

##### **A. Activation SMS Format from Backend System to Device**

For completion of the installation process, the VLT device shall undergo Activation process as per below:

- Activation Message Request Format from the Backend System to the Device (Through SMS): ACTV, Random Code, Reply SMS Gateway no.
- Activation Message Reply Format from Device to the Backend System (Through SMS) as per Table 1 below:

<b>Table-1: Activation &amp; Health Check Response SMS Format from Device to Backend System</b>			
<b>Field Name</b>	<b>Characters</b>	<b>Activation Example</b>	<b>Health Check Example</b>
Header	5	ACTVR	HCHKR
Separator	1	,	,
Random code	6	343434	474747

Separator	1	,	,
Vendor ID	4		
Separator	1	,	,
Firmware version	6	V1.6.1	V1.6.1
Separator	1	,	,
IMEI	15	012345678912345	012345678912345
Separator	1	,	,
Alert ID	2	1	1
Separator	1	,	,
Latitude	12	14.034533	14.034533
Separator	1	,	,
direction	1	N	N
Separator	1	,	,
Longitude	12	79.32045	79.32045
Separator	1	,	,
Direction	1	E	E
Separator	1	,	,
GPS fix	1	1	1
Separator	1	,	,
Date and Time	15	16112018 120317	16112018 120317
Separator	1	,	,
Heading	6	263.19	263.19
Separator	1	,	,
Speed	4	25.4	25.4
Separator	1	,	,
GSM Strength	2	23	23
Separator	1	,	,
Country Code (MCC)	3	404	404
Separator	1	,	,
Network Code (MNC)	4	10	10
Separator	1	,	,
LAC	4	d6d6	d6d6
Separator	1	,	,
Main Power	1	1	1
Separator	1	,	,
IGN Status	1	1	1
Separator	1	,	,

Battery Voltage	4	24.6	24.6
Separator	1	,	,
Frame Number	6	100000	100000
Separator	1	,	,
Vehicle mode	2	ID	ID
<b>Total Characters</b>	<b>139</b>		

## **B. Health Check Random Messages from Backend System to Device**

Frequency: Twice Daily (Recommended),  
Health Check Message Request Format from the Backend System to the Device (Through SMS): HCHK, Random Generated ID, Reply SMS Gateway no.  
Health Check Message Reply Format from Device to Backend System (Through SMS): As per Table 1 above.

## **C. Publish Data to Common Layer by VLT Device Manufacturers' Applications (Sample)**

### **Requirement to be complied with by VLT device manufacturers' applications**

Application shall publish the data to common layer in a specified frequency and format as mentioned below

### **Services to publish data to the common layer**

#### **a. Push Offence Details**

Type	REST web service
Data Type	JSON Array
Frequency	1 Hour

A single request may contain JSON Array of maximum 500 JSON Objects of the following format.

SI No	Key	Value Length in bytes	Description
<b>In Parameters</b>			
1.	oftyp	2	Offence Type OS= Overspeed
2.	vno	16	Vehicle number without any delimiter like hyphen (-) or space.
3.	imei	15	IMEI number.
4.	date	8	Date in format DDMMYYYY
5.	time	6	UTC in format hhmmss

6.	lat	12	Latitude,decimal not less than 6 places
7.	latd	1	Latitude Direction. N=North, S=South
8.	lon	12	Longitude,decimal not less than 6 places
9.	lond	1	Longitude Direction. E=East, W=West
10.	spd	6	Speed in km/hrs, Upto One Decimal Value.
11.	loc		Location (Reverse Geo-coded)
12.	rto		RTO Code
13.	state		State Code
<b>Response</b>			
14.	resp		OK/ Error

<b>b. Push Alert Details</b>	
Type	REST web service
Data Type	JSON Array
Frequency	1 Hour

A single request may contain JSON Array of maximum 500 JSON Objects of the following format.

Sl No	Key	Value Length in bytes	Description
<b>In Parameters</b>			
1.	alrtid	2	Alert ID as per AIS-140
2.	vno	16	Vehicle number without any delimiter like hyphen (-) or space.
3.	imei	15	IMEI number.
4.	date	8	Date in format DDMMYYYY
5.	time	6	UTC in format hhmmss
6.	lat	12	Latitude,decimal not less than 6 places
7.	latd	1	Latitude Direction. N=North, S=South
8.	lon	12	Longitude,decimal not less than 6 places

9.	lond	1	Longitude Direction. E=East, W=West
10.	spd	6	Speed in km/hrs, Upto One Decimal Value.
11.	loc		Location (Reverse Geo-coded)
12.	rto		RTO Code
13.	state		State Code
<b>Response</b>			
14.	resp		OK/ Error

### 8.5 Conformity of Production - Testing Parameters

- a. The VLT device manufacturers will get their devices tested and certified for conformity of production from the testing agencies referred to in rule 126 of the CMVR for compliance to the rule 125 H of CMVR every year from the date of first certification. The parameters for testing shall be as specified in Table 1 of this section.
- b. The VLT device manufacturers shall get their backend applications audited from the testing agencies referred to in rule 126 of the CMVR/STQC/NIC or by the agencies specified by States/UTs every year from the date of first certification. The parameters for auditing shall be as specified in Table 2 of this annexure.
- c. The testing agencies shall provide the details of the VLT devices and backend applications certified by them to the States/UTs by uploading the same on the respective backend systems or any other means.

<b>Table 1:</b>	
<b>Test for COP of VLT Device and Emergency Buttons</b>	
<b>Sl. No.</b>	<b>Test Details (As per AIS-140)</b>
1.	Emergency button functionality (Clause No. 3.1.2.4)
2.	SMS fall back (Clause 3.1.5)
3.	Table 6A: Functional Testing (Sr. No. 1-9, Clause 6.3.1)
4.	Performance Parametric Test of Table 6B (Clause 6.3.2, Sr. No.10)
5.	Protocol & alerts verification as per -Clause No 4.1 and Table no 4A, -Clause No 4.2 and Table no 4B, 4C -Clause No 3.1.4 & Table no 3B - OTA Commands verification
6.	Ingress Protection (IP) Test as per Sr. No. 3 of Table 6B

<b>Table 2:</b> <b>Test Parameters for Auditing of VLT Device Manufacturer's Backend Application/System</b>	
<b>Sl. No.</b>	<b>Test Details</b>
1.	Firmware over the air update. Backend application should be able to remotely read the existing version number of the firmware via an OTA configuration read command. A new version of the firmware should be pushed over the air. This should be verified by reading the new version number of the new firmware in the device via and OTA configuration read command.
2.	Application availability test to be conducted over a 7 days' period by periodic check of availability randomly or at specified intervals in an automated or manual manner.
3.	Test functionality of application to allow user to map & un-map a device to a vehicle.
4.	Test functionality to track a vehicle on a map over a period of 8 hours given either a device ID or vehicle registration number. The device ID and vehicle should be mapped beforehand.
5.	Test replay of a vehicles location by specifying a start and end date and time and device ID or vehicle registration number. The start and end date and time should be from within the last 3 months at date of test. In case 3 months of historical data is not available, the VLT manufacturer can pre-populate test data for the duration.
6.	Firmware binary should be made available with version matching one in the device as well as binary size & modification timestamp and/ or checksum should match for the binary provided and one installed on device.
7.	Test to confirm geographical location of IP addresses, the device communicates with by IP Geolocation for all IPs configured into the device to confirm they are in India. The IPs configured should be read from the firmware configuration via configuration read command and also separately confirmed against a list of IPs provided by the VLT manufacturer.
8.	VLT manufacturer to provide a certificate, statement or affidavit certifying the location of data centre/ cloud hosting region in India for user, device and vehicle data.
9.	VLT manufacturer to provide a Vulnerability Analysis and Penetration Testing report from a 3 <sup>rd</sup> party test agency authorised by CERT-In/STQC.

**14. Page 34 ANNEXURE A**

Delete clause no 6.2

**15. Page 35 ANNEXURE B**

**Substitute the following test for the existing text:**

**ANNEXURE B: CRITERIA FOR EXTENSION OF TYPE APPROVAL**

B1.0 In case of following changes, Functional, Performance, Durability and Environmental Tests which are necessary for establishing compliance are listed below

	<b>Changes in System</b>	<b>Tests to be conducted</b>
B1.1	Change in Make, Model, Type, accompanied with or without a Part No of Vehicle Location Tracking (VLT) and Vehicle Health Monitoring.	Applicable tests as per Section 6 and Functional verification at system integration level or component level as applicable
B1.2	Change in software of ITS System	Functional verification at system integration level.
B1.3	Change in wiring harness	Wiring harness requirements specified in this standard

PRINTED BY

THE AUTOMOTIVE RESEARCH ASSOCIATION OF INDIA  
P. B. NO. 832, PUNE 411 004  
ON BEHALF OF

AUTOMOTIVE INDUSTRY STANDARDS COMMITTEE  
UNDER

CENTRAL MOTOR VEHICLES RULES - TECHNICAL STANDING COMMITTEE  
SET-UP BY

MINISTRY OF ROAD TRANSPORT & HIGHWAYS  
(DEPARTMENT OF ROAD TRANSPORT & HIGHWAYS)  
GOVERNMENT OF INDIA

5<sup>th</sup> December 2018

**Amendment 1 (11<sup>th</sup> December 2017)**

**To**

**AIS-140: Intelligent Transportation Systems (ITS) - Requirements for Public Transport Vehicle Operation**

**1. Page 2**

Replace Clause 1.B.7, Substitute the following text for the existing text:

- 1.B.7     **“Global Navigation Satellite System (GNSS)”** refers to a space-based radio navigation system. It provides positioning, navigation and timing services to military and civilian user on a continuous basis.

**2. Page 2**

Add new sub clause 1.B.12:

- 1.B.12     **“SIM/UICC”** refers to Subscriber Identification Module (SIM)/ Universal integrated circuit card (UICC) as per GSMA guidelines / DoT (TEC) Guidelines. Embedded SIM/UICC is a PCB soldered SIM/UICC/eUICC.

**3. Page 2**

Add new sub clause 1.B.13:

- 1.B.13     **“Cellular Technology”** such as GPRS/UMTS/HSPA/LTE etc.

**4. Page 5**

Clause 3.1.1.1. a, Substitute the following text for the existing text:

- a.     Device shall be capable for operating in L and/or S band and include support for NAVIC/IRNSS (Indian Regional Navigation Satellite System) for devices installed on vehicles on or after 1<sup>st</sup> October 2018. However VLT devices shall be compliant as per other GNSS constellation in the interim period.

**5. Page 5**

Clause 3.1.1.1. d, Substitute the following text for the existing text:

- d.     Device shall have an acquisition sensitivity of minimum (-) 145 dBm with GNSS/ (-) 140 dBm with IRNSS (NAVIC as applicable).

**6. Page 5**

Clause 3.1.1.1. e, Substitute the following text for the existing text:

- e.     Device shall have a tracking sensitivity of minimum (-) 160 dBm with GNSS / (-) 153 dBm with IRNSS (NAVIC as applicable).

**7. Page 5**

Clause 3.1.1.1. f, Substitute the following text for the existing text:

- f.     Device shall have an internal antenna; however, if in case of Integrated systems with vehicle OEM fitted kits if the fitment location prevents the internal antenna from functioning, then additional external antenna may be provided.

**8. Page 5**

Clause 3.1.1.2, Substitute the following text for the existing text:

- 3.1.1.2 Device shall support standard minimum I/Os as mentioned: 4 Digital, 2 Analog Input and 1 Serial Communication (e.g. RS232) for interfacing external systems (E.g. Digital input for Emergency request button interfacing).

**9. Page 5**

**Clause 3.1.1.3, Substitute the following text for the existing text**

- 3.1.1.3 Device shall be capable of transmitting data to Backend Control Server (Government authorized server) via Wide Area (Mobile) Communications network (Cellular) as per Communication Protocol in Section 4.

**10. Page 5**

Clause 3.1.1.4, Substitute the following text for the existing text :

- 3.1.1.4 Device shall be capable of transmitting Position, Velocity and Time (PVT data) along with heading (direction of travel) to a Backend Control Server (Government authorized server) at configurable frequency as per Communication Protocol of Section 4.

The fixed frequency shall be user configurable. Highest data transmission rate shall be 5 sec during vehicle operation and not less than 10 minutes in sleep/IGN OFF) as per the protocol defined in Communication Protocol of Section 4.

**11. Page 5**

Clause 3.1.1.6, Substitute the following text for the existing text :

- 3.1.1.6 On pressing of Emergency button, the system implementing VLT function shall send emergency Alert (Alert ID 10 as mentioned in Sub-section 4.2.1 of Communication Protocol Section 4) to the configured IP address(s) as per the Communication Protocol mentioned in Section 4. In the absence of Cellular network, the emergency alert shall be sent as SMS message along with vehicle location data to configured control center number(s). The SMS shall consist parameters as given in Sub-section 4.2.2.

**12. Page 6**

Clause 3.1.1.12, Substitute the following text for the existing text:

- 3.1.1.12 The Device shall have a unique identifier for identifying the VLT device and data. The unique ID shall be stored in a read only memory area so that it cannot be altered or overwritten by any person. The unique identifier is IMEI (International Mobile Station Equipment Identity) Number.

**13. Page 6**

Clause 3.1.1.14, Substitute the following text for the existing text:

- 3.1.1.14 Device shall have an Embedded SIM/UICC.

**14. Page 6**

Clause 3.1.1.15, Substitute the following text for the existing text:

3.1.1.15 Device shall be designed to operate 12V DC and or 24 V DC.

**15. Page 6**

Clause 3.1.1.16, Substitute the following text for the existing text:

3.1.1.16 Device shall have a sleep mode current  $\leq 50$  mA.

**16. Page 6**

Clause 3.1.1.18, Substitute the following text for the existing text:

3.1.1.18 The Device shall support:

- Location on Cellular /SMS
- Non-volatile memory to store min 40,000 positional log
- Configurable backup SMS facility in case of Cellular failure
- Capability to send serving and adjacent cell ID as well as network measurement report (NMR)

**17. Page 7**

Clause 3.1.1.19, Substitute the following text for the existing text:

3.1.1.19 The VLT Device shall have:

- The capability of Hot start  $< 10$ s
- The capability of Warm start :  $< 60$  s
- The capability of Cold start  $< 120$  s

**18. Page 7**

Clause 3.1.1.20, Substitute the following text for the existing text:

3.1.1.20 Device shall support data Outputs as per protocol covered in this standard.

**19. Page 7**

Clause 3.1.1.21, Substitute the following text for the existing text:

3.1.1.21 The Device Cellular module shall have:

- Multi slot Cellular with In – built Quad-band Cellular module/Modem
- Cellular class 10 or above
- Support Embedded SIM/UICC to cater to the operational requirement such as vibration, temperature and humidity and provide long life span with at least 10 years life and more than 1 million read/write cycles
- Cellular module & Embedded SIM/UICC shall support
  - SMS, Data (Cellular, TCP/IP) and
  - Support multiple network OTA switching (on-demand / automatic) capabilities.

**20. Page 7**

Clause 3.1.1.23, Substitute the following text for the existing text:

- 3.1.1.23 Device shall be manufactured by manufacturer whose quality management system has been certified for compliance to ISO / TS 16949 or ISO 9001 or any equivalent National or International standard.

**21. Page 8**

Clause 3.1.2.3, Substitute the following text for the existing text:

- 3.1.2.3 The Emergency Buttons will be such that disconnection between switch and controller should be detected through controller logic or 'Normally Closed' (NC) Type Switch. For Emergency button, there shall be indication of its working status visible for passengers in Ignition ON Condition. The form factor of Emergency Buttons will be such that the button is easy to press in the case of an emergency, and simultaneously also minimizes the possibility of accidental or unintended press thereby causing a false alert.

**22. Page 8**

Clause 3.1.2.4, Substitute the following text for the existing text :

- 3.1.2.4 On pressing of Emergency button, the system implementing VLT function shall send emergency Alert (Alert ID 10 as mentioned in Sub-section 4.2.1 of Communication Protocol Section 4) to the Backend Control Server (Government authorized server) as per the Communication Protocol mentioned in Section 4. In the absence of Cellular network, the alert shall be sent as SMS message along with vehicle location data to configured control center number. The SMS shall consist of parameters as given in Sub-section 4.2.2.

**23. Page 8**

Clause 3.1.2.5, Substitute the following text for the existing text :

- 3.1.2.5 In absence of both Cellular and GSM networks and on pressing of Emergency Button, the system implementing VLT function shall store the emergency Alert (Alert ID 10 as mentioned in Sub-section 4.2.1 of Communication Protocol Section 4). Once the Cellular or GSM is available, this alert information shall be sent on high priority to the configured IP addresses as per the communication protocol mentioned in Section 4 or as SMS message along with vehicle location data to configured control center number. The SMS shall consist of parameters as given in Sub-section 4.2.2.

**24. Page 8**

Clause 3.1.3, Substitute the following text for the existing text :

**3.1.3 Configuration of Device Parameters Over the Air (OTA)**

The device shall support at least the below parameters to be configurable over the air (through SMS and Cellular). The updation/ configuration shall be allowed only over an 'authenticated' channel:

1. Setting/ Change of the Primary or Secondary IP and port number
2. Setting/ Change of the APN
3. Set configuration parameter like sleep time, over speed limit, harsh braking, harsh acceleration, rash turning threshold limits etc.
4. Emergency control SMS Centre Number(s)
5. Configuring the vehicle registration number

6. Configuring the frequency of data transmission in normal / Ignition state / OFF state sleep mode/ Emergency state, etc.
7. Configuring the time duration for Emergency state
8. Capability to reset the device
9. Command to get the IMEI of the device Configurable commands must involve the following features:
  - 9.1. SET: For setting the parameters.
  - 9.2. GET: For enquiring regarding the parameters such as mobile number, GSM strength, vehicle number and other important parameters.
  - 9.3. CLR: For clearing certain commands, alarms, alerts etc. except emergency alert

After each SET, GET, CLR command the device should send alert to Backend Control Centre, as mentioned in Section 4 Alert 12, giving the details of Mode, mobile no/ IP of control center sending commands.

**25. Page 9**

Clause 3.1.5, Substitute the following text for the existing text :

- 3.1.15 In case of emergency state, (i.e. on pressing of Alert button), the device will shift to the SMS mode in case Cellular connectivity is not available. In such case, the device will send the Alert message and tracking data through SMS mode. Since SMS has the limitation of sending only 160 characters, so the tracking data to be sent in one SMS will have fields - IMEI, Latitude, Direction, Longitude, Direction, location fix, speed, Cell ID, LAC (Location Area Code), Date and Time as per emergency alert . The details is provided in Sub-section 4.2.2.

**26. Page 12**

In Table 4 A , for the item Checksum and entries thereof, substitute the following:

Checksum	Ensures No error in transmission (optimal)	16
----------	--	----

**27. Page 13**

In Table 4 B, for the item – Alert Id 2. Location Update (history) and entries thereof, substitute the following:

2.	Location Update (history)	Would be sent, if Cellular is not available at the time of sending the message in protocol format Zero, BLANK, NIL, etc.
----	---------------------------	--

**28. Page 14**

Clause 4.2.2, For first paragraph substitute the following text for the existing text:

- 4.2.2 In case of emergency alert, the alert message shall be sent to 2 different IP addresses hence the device shall support minimum 2 IP addresses (1 IP address for regulatory purpose (PVT data) and 1 IP address for Emergency response system other than the IP's required for Operational purpose. The PVT data will send the emergency alert to the system. Only Primary alert data will go to the emergency response Backend Control Centre (NERS/ MHA) as may be notified by the Government of India in the schema below:

29. Page 14

Substitute the following Table 4 C for existing Table 4 C :

<b>Table 4C:</b>		
<b>Indicative Format for Alert to Emergency Response System</b>		
<b>Attribute</b>	<b>Value / Description</b>	<b>Size</b>
Start Character	\$	1 Byte
Packet Header	EPB, The unique identifier for all messages from VLT	Character, 3 bytes
Packet Type	Message Types supported. Emergency Message (EMR) or Stop Message (SEM)	Character, 3 bytes
IMEI Number	Unique ID of the Vehicle (IMEI Number)	Character, 15 bytes
Packet Status	NM – Normal Packet, SP – Stored Packet	Character, 2 bytes
Date	Date and time of location the location obtained from the data in DDMMYYYY hhmmss format	Character, 14 bytes
GPS Validity	A – Valid, V – Invalid	Character, 1 byte
Latitude	Latitude in decimal degrees - dd.ddddd format	Double, 12 bytes
Latitude Direction	N – North, S – South	Character, 1 byte
Longitude	Longitude in decimal degrees - dd.ddddd format	Double, 12 bytes
Longitude Direction	E – East W – West	Character, 1 byte
Altitude	Altitude in meters (above sea level)	Double, 12 bytes
Speed	Speed of Vehicle as Calculated by GPS module in VLT. (in km/hr)	Float, 6 bytes
Distance	Distance calculated from previous GPS data	Float, 6 bytes

Provider	G - Fine GPS N - Coarse GPS or data from the network	Character, 1 byte
Vehicle Regn. No	Registration Number of the Vehicle	Character, 16 bytes
Reply Number	The mobile number to which Test response needs to be sent. (Emergency Mobile No. as specified by MHA/MoRTH/States.)	0 Note: No number needs to be sent. This field will with value 'zero'
End Character	*	1 byte
Check sum	Ensure no error in transmission	8 bytes
*Above format is indicative only. These Format will be notified by the Government of India time to time.		

**30. Page 15**

**In Clause 4.3, for the words:**

“• CLR: For clearing certain commands, alarms, alerts etc.”

**Substitute the following text:**

“• CLR: For clearing certain commands, alarms, alerts etc. except emergency alert.”

**31. Page 16**

Clause 5.1, Substitute the following text for the existing text :

**5.1 Requirements on vehicle interface for VLT with Emergency Button**

Connector for Power

The requirements for interface shall be as agreed between vehicle manufacturer and device manufacturer.

**32. Page 16/17**

Clause 5.3, Substitute the following text for the existing text :

### 5.3 **Physical Mounting**

The VLT system shall be mounted in a suitable location such a way that it is not easily accessible /exposed to passengers.

This requirement shall not be applicable in case of combined systems VLT with HMI (Human Machine Interface) display in front of driver.

Test agency to verify this on vehicle level approval.

Emergency button(s) shall be fitted in such a way that every passenger including driver shall be able to access the Emergency button(s).

Passenger Car shall have at least one emergency buttons on each passenger row easily accessible by each of the passenger. There shall also be one dedicated emergency button for the driver row.

Passenger Transport bus shall have emergency buttons at locations easily visible & assessable to all the passengers such as every 2 meters on both the sides on passenger seating area. For seats reserved for ladies there shall be a dedicated panic button for each row.

It shall be permissible to have a single emergency button for two successive ladies' rows on both sides of the vehicle provided each lady passenger in either rows are able to reach and operate the emergency button.

Test agency to verify this on vehicle level approval.

## 33. **Page 17**

Clause 5.4, Substitute the following text for the existing text :

5.4 The vehicle tracking device will be installed on vehicles in which the power supply voltage from vehicle battery is widely varying (12V, 24V etc.) and also the power supply is not as stable as that in case of fixed locations, especially during engine start-up and braking when the voltage can fall to as low as 9V. Typically electronic devices are very sensitive to power surges and spikes, and equipment may fail if they do not receive stable power supply. The devices will need to have a resilient power supply unit that can withstand such fluctuations and the devices also need to have power backup so that they continue to function for some duration when the vehicle battery is not functional or is disconnected from the devices.

Vehicle power interface shall have

- One common ground linked to vehicle chassis
- One permanent power Supply (12/24V) connected to the vehicle battery (+Vbat).
- One non-permanent power line (12/24V) connect to the battery after ignition (IGN).

## 34. **Page 17**

Clause 6.1.1.2, Substitute the following text for the existing text :

6.1.1.2 System transmits PVT information to Backend Control Center (2 different IPs) at user configurable frequency (minimum 5 seconds) via GSM / Cellular.

**35. Page 18**

Clause 6.2.1.1, Substitute the following text for the existing text :

6.2.1.1 Standard connector provided for Power and other signals as per clause no 5.1.


**36. Page 18**

Clause 6.2.1.5, Substitute the following text for the existing text :

6.2.1.5 Updating of the firmware of the system from Backend Control Centre only.

**37. Page 19**

Substitute the following Table 6 A for existing Table 6 A :

Table 6A:		
Functional Testing		
Sl. No	Test	Test Procedure
1	Tracking Functionality Test	<p>The test shall be conducted on VTL to determine the proper functioning of VLT with Emergency Button by testing its connectivity to Backend Control Centre (Government authorized server).</p> <p>Procedure: The VLT with Emergency Button shall be connected to vehicle battery to switch it on. The VLT with Emergency Button shall be tested for the connectivity to server and its capability to send two location messages</p>
2	Location Accuracy Test	<p>This test shall be conducted on VLT with Emergency Button.</p> <div data-bbox="896 1357 1347 1509"></div> <p>The receiver is placed into a cold start state – usually by a command sent to the receiver through a test connection – and then a fairly strong navigation signal simulating in L and/or S band is sent. The time it takes for the receiver to determine its first good location fix is recorded. Test is done many times (&gt;15 times) over many conditions and the results are averaged.</p> <p><b>Acceptance Criteria:</b> 2.5 m CEP or 6 m 2DRMS.</p>

3	Acquisition Sensitivity Test	<p>This test shall be conducted on VLT with Emergency Button.</p> <p><b>Procedure:</b> Set the simulator to output navigation signal simulating L and/or S band to a particular location with a very level so that the tracking is not possible. Gradually increase the signal level that allows the receiver to successfully perform a cold start TTFF. The minimum signal level that allows acquisition is referred as to the acquisition sensitivity.</p> <p><b>Acceptance Criteria:</b> The acquisition sensitivity shall be minimum (-)145 dBm with GNSS/ (-) 140 dBm with IRNSS (NAVIC as applicable.).</p>
4	Tracking Sensitivity Test	<p>This test shall be conducted on VLT.</p> <p><b>Procedure:</b> The device under this test is locked on to the simulator's output frequency (navigation signal simulating L and/or S band) and the simulator power output is lowered until the lock is lost. Multiple repetition of the test with different satellite geometries ensures that an accurate average measure is recorded.</p> <p><b>Acceptance Criteria:</b> The tracking sensitivity shall be equal to or better than (-) 160 dBm with GNSS / (-) 153 dBm with IRNSS (NAVIC as applicable).</p>
5	Cold-Start Time to First Fix (TTFF) Test	<p>The device in this test is placed into a cold start state. The time it takes for the device to determine its first good location fix is recorded. The cold start test is performed several times and the results are averaged.</p> <p><b>Acceptance Criteria:</b> The cold start TTFF shall be less than 120 seconds at Open Sky condition or (-) 130 dBm.</p>
6	Warm-Start Time to First Fix Test	<p>In this test the device is started in warm start mode and time taken by device to determine the first valid location fix is recorded. This is done several times and results are averaged.</p> <p><b>Acceptance Criteria:</b> The warm start TTFF shall be less than 60 seconds at Open Sky condition or (-) 130 dBm.</p>

7	Hot-Start Time to First Fix Test	<p>In this test the device is started in Hot start mode and time taken by device to determine the first valid location fix is recorded. This test is performed several times and results are averaged.</p> <p><b>Acceptance Criteria:</b> The hot start TTFF shall be less than 10 seconds.</p>
8	Embedded SIM/ UICC Test	<p>This test is to check the suitability of the embedded SIM/ UICC and communication module. The test shall be conducted to determine the effectiveness and operation of the Cellular module with OTA network switching capabilities on demand as well as automatically in real-time. The test consist of two type of testing as below:</p> <ol style="list-style-type: none"> <li>1. The device would be tested to perform as per the protocol using an embedded SIM/UICC.</li> <li>2. The Cellular module &amp; embedded SIM/UICC, shall support: <ul style="list-style-type: none"> <li>o SMS, Data (Cellular, TCP/IP) and</li> <li>o Support multiple network OTA switching capabilities (On Demand as well as Automatic Switching on real-time basis)</li> </ul> </li> </ol> <p><b>Acceptance Criteria:</b> In the testing, vendors has to demonstrate the embedded SIM/UICC based tracking and multiple network OTA switching capabilities (On Demand as well as Automatic Switching on real-time basis) for effective network management and transmission.</p>
9	Functional Endurance Test	<p>VLT device shall be operated for 96 hours with external power supply and internal battery connected to device. PVT data monitoring will be done for complete duration of test with data frequency defined after IGN switch ON mode. VLT device shall function successfully during and after test.</p>
10	On Vehicle Dynamic Location Test	<p>VLT devices will be mounted on any target vehicle connected with vehicle battery. Target vehicle with VLT devices will be run for 10 km on pre-defined track/route to verify dynamic location test. VLT device PVT data shall be within 12 meter for more than 90% of the fixed location data (as arrived using DGPS device on the same route). VLT device PVT data shall be super imposed on followed route map to check its correctness of followed route.</p>

38. Page 23

In Table 6 B, for the Sl. No. 5 and entries thereof, substitute the following:

5	Battery Backup Test	<p>Battery backup is the amount of time that the device battery can support sending the data without being connected to the power source. This test will be performed by disconnecting the input charging voltage to the device. On disconnecting the external supply, battery would use its charge capacity to send data through Cellular. Time duration between external power disconnect to the last data packet time denotes the battery backup time.</p> <p><b>Acceptance Criteria:</b> Device shall be able to work in active mode for a period of 4 hours or more at the polling/ transmission rate of 60 sec</p>
---	---------------------	--

39. Page 19

Substitute the following Table 6 C for existing Table 6 C:

Table 6C:		
Device Level Environmental Test		
Sl. No	Test	Test Procedure
1	Dry Heat / High Temperature Test	<p>The high temperature test is used to evaluate effects of high temperature conditions on safety, integrity, and performance of the device. The test shall be carried out in accordance with Indian Standard IS: 9000 (Part 3/Sec 5) the device shall be subjected to temperature of <math>70 \pm 2^{\circ}\text{C}</math> for 16 h in high temperature. Test with device in working condition. The recovery period shall be 2 h.</p> <p><b>Acceptance Criteria:</b> Device during and after the high temperature test the device shall be required to meet the provisions of Functional Test Number 1 as listed in Table 6A.</p>

2	Cold Test	<p>The test shall be carried out in accordance with IS 9000 (Part 2/Sec 4 – 1977). The device under test shall be subjected to temperature of <math>-10 \pm 2^{\circ}\text{C}</math> for 2 h with device in working condition. The recovery period shall be 2 h.</p> <p><b>Acceptance Criteria:</b> Device during and after the cold test, the device shall be required to meet the provisions of Functional Test Number 1 as listed in Table 6A.</p>
3	Damp Heat Test	<p>The device under test shall be tested according to IS 9000 (Part 5/Sec 2 – 1981). The test is carried out at <math>+25^{\circ}</math> to <math>+55^{\circ}\text{C}</math>, Humidity 95%. Six cycles (each test cycle of 24 h) shall be run with device in off condition. Functional test shall be carried out with power in ‘On condition’ at start of 2<sup>nd</sup>, 4<sup>th</sup> and 6<sup>th</sup> cycle.</p> <p><b>Acceptance Criteria:</b> Device during and after the test the device shall be required to meet the provisions of Functional Test Number 1 as listed in Table 6A.</p>
4	Temperature Shock	<p>Temperature shock test is carried out to determine if the device can withstand sudden changes in the temperature of the surrounding atmosphere without experiencing physical damage or deterioration in performance. The device shall be tested as per IS 9000 (Part 14/Sec 2) – 1978. Exposure time at temperature extremes <math>-10^{\circ}\text{C}</math> and <math>70^{\circ}\text{C}</math> would be 3 hours/cycle and number of cycles would be two.</p> <p><b>Acceptance Criteria:</b> Device after the test the device shall be required to meet the provisions of Functional Test Number 1 as listed in Table 6A.</p>
5	Salt Spray Test	<p>The salt spray test is conducted to check corrosion resistance of device. The device shall be tested according to Clause 4.8 of IS 10250 for 96 h.</p> <p><b>Acceptance Criteria:</b> The device shall be required to meet the provisions of Functional Test Number 1 as listed in Table 6A.</p>
6	High Voltage Test	<p>The test is conducted to ensure service life requirements &amp; functionality. The device under test shall be operated for 60 minutes at 18 V for 12 V systems &amp; 36 V for 24 V systems. This test is as per ISO 16750-2:2010</p>

		<b>Acceptance Criteria:</b> Device during and after the test the device shall be required to meet the provisions of Functional Test Number 1 as listed in Table 6A.
--	--	---

**40. Page 27**

In Table 6 D; for item Packet Type and Alert ID and entries thereof, substitute the following text for existing text :

Packet Type	Specify the packet type – NR = Normal EA = Emergency Alert TA = Tamper Alert <b>(Optional)</b> HP = Health Packet IN = Ignition On IF = Ignition Off BD = Vehicle Battery Disconnect BR = Vehicle Battery Reconnect BL = Internal Battery Low HB= Harsh Braking HA= Harsh Acceleration RT= Rash Turning
Alert ID	02 Character

**41. Page 29**

**After Table 6 D; for paragraph (a), substitute the following text for existing text**

- a) The device shall support 40000 or more positional logs/packets. This is a functional test and the device will be simulated to be in non – Cellular coverage area and the logs will be maintained. The capacity of logging will be checked by monitoring the logs on the device.

**42. Page 29**

In Table 6 E; for Alert ID 2 and entries thereof, substitute the following text for existing text :

2.	Location Update (history)	Would be sent, if Cellular is not available at the time of sending the message
----	---------------------------	--

**43. Page 30**

Substitute the following Table 6 F for existing Table 6 F:

<b>Table 6F:</b>		
<b>Message Format</b>		
Start Character	\$	1 byte
Packet Header	EPB, The unique identifier for all messages from VLT	Character, 3 bytes
Packet Type	Message Types supported. Emergency Message (EMR) or Stop Message (SEM)	Character, 3 bytes
IMEI Number	Unique ID of the Vehicle (IMEI Number)	Character, 15 bytes
Packet Status	NM – Normal Packet, SP – Stored Packet	Character, 2 bytes
Date	Date and time of the location obtained from the location data in DDMMYYYY hhmmss format	Character, 14 bytes
GPS Validity	A – Valid, V – Invalid	Character, 1 byte
Latitude	Latitude in decimal degrees - dd.mmmmmm format	Double, 12 bytes
Latitude Direction	N – North, S – South	Character, 1 byte
Longitude	Longitude in decimal degrees - dd.mmmmmm format	Double, 12 bytes
Longitude Direction	E – East W – West	Character, 1 byte
Altitude	Altitude in meters (above sea level)	Double, 12 bytes
Speed	Speed of Vehicle as Calculated by GPS module in VLT. (in km/hrs.)	Float, 6 bytes
Distance	Distance calculated from previous GPS data	Float, 6 bytes
Provider	G - Fine GPS N – Coarse GPS or data from the network	Character, 1 byte
Vehicle RegnNo	Registration Number of the Vehicle	Character, 16 bytes
Reply Number	The mobile number to which Test response need to be sent. (Emergency Mobile No. as specified by MHA/MoRTH/States.)	0
End Character	*	1 byte
Check sum	Ensure no error in transmission.	8 bytes

**44. Page 31**

In Clause no. 7 for first paragraph substitute the existing text with following text :

The VLT device would transmit data to the Backend Control Centre using Cellular wireless connectivity (with SMS fall back) as per the protocol provided in respective sections (Sub-section 6.3.4). The data from the devices would travel over the wireless telecom service provider network and finally get delivered at the Backend Control Centre. Since the permit holders/Device suppliers would require to have a valid communication plan on embedded SIM/UICC cards on the devices and would avail services from multiple telecom service providers, the data would be transmitted to the Backend Control Centre using the networks of multiple telecom service providers.

**45. Page 31**

In Clause no. 7 for second paragraph substitute the existing text with following text :

A suitable control mechanism would be established for the data transfer from VLT to Backend Control Centre, as only the authorized devices should be able to transfer data to the Backend Control Centre and a mechanism for authenticating the devices/ embedded SIM/UICC shall also be put into place.

**46. Page 36**

Delete Annexure C :

PRINTED BY

THE AUTOMOTIVE RESEARCH ASSOCIATION OF INDIA  
P. B. NO. 832, PUNE 411 004  
ON BEHALF OF

AUTOMOTIVE INDUSTRY STANDARDS COMMITTEE  
UNDER

CENTRAL MOTOR VEHICLES RULES - TECHNICAL STANDING COMMITTEE  
SET-UP BY

MINISTRY OF ROAD TRANSPORT & HIGHWAYS  
(DEPARTMENT OF ROAD TRANSPORT & HIGHWAYS)  
GOVERNMENT OF INDIA

11<sup>th</sup> December 2017

**AUTOMOTIVE INDUSTRY STANDARD**

**Intelligent Transportation Systems  
(ITS) - Requirements for Public  
Transport Vehicle Operation**

PRINTED BY  
THE AUTOMOTIVE RESEARCH ASSOCIATION OF INDIA  
P.B. NO. 832, PUNE 411 004

ON BEHALF OF  
AUTOMOTIVE INDUSTRY STANDARDS COMMITTEE

UNDER  
CENTRAL MOTOR VEHICLE RULES – TECHNICAL STANDING COMMITTEE

SET-UP BY  
MINISTRY OF ROAD TRANSPORT and HIGHWAYS  
(DEPARTMENT OF ROAD TRANSPORT and HIGHWAYS)  
GOVERNMENT OF INDIA

October 2016

**Status chart of the Standard to be used by the purchaser for updating the record**

<b>Sl. No.</b>	<b>Corrigenda</b>	<b>Amendment</b>	<b>Revision</b>	<b>Date</b>	<b>Remark</b>	<b>Misc.</b>

**General remarks:**

## INTRODUCTION

The Government of India felt the need for a permanent agency to expedite the publication of standards and development of test facilities in parallel when the work on the preparation of the standards is going on, as the development of improved safety critical parts can be undertaken only after the publication of the standard and commissioning of test facilities. To this end, the erstwhile Ministry of Surface Transport (MoST) has constituted a permanent Automotive Industry Standards Committee (AISC) vide order No. RT-11028/11/97-MVL dated September 15, 1997. The standards prepared by AISC will be approved by the permanent CMVR Technical Standing Committee (CTSC). After approval, the Automotive Research Association of India (ARAI), Pune, being the secretariat of the AIS Committee, will publish this standard.

Intelligent Transport Systems (ITS) are globally proven systems to optimize the utilization of existing transport infrastructure and improve transportation systems in terms of efficiency, quality, comfort and safety. Having realized the potential of ITS, Government bodies and other organizations in India are presently working towards implementing various components of ITS across the country.

The first step taken for creation and implementation of ITS was holding a National Workshop titled “User Requirements for Interactive ITS Architecture”, which was conducted as a collaboration between SIAM and ASRTU on 26<sup>th</sup> & 27<sup>th</sup> February 2015. This was primarily focused on ITS in Public Bus Transportation. Nonetheless, the workshop helped to create the outline for “National Intelligent Transport System Architecture and Policy for Public Transport (Bus)”, which was submitted by ASRTU and SIAM to the government

In the 44<sup>th</sup> & 45<sup>th</sup> CMVR-TSC, Chairman had directed - standardization activities to be initiated on Intelligent Transportation Systems (ITS) - Vehicle Location Tracking, Camera Surveillance System and Emergency Request Button. The committee intended to extend the above user requirements to all public transportation namely – buses, taxis, etc. The current document covers the requirements for Vehicle Location Tracking and Emergency Button. The other ITS components like PIS, CCTV system, Fare collection etc. are deliberated and would be addressed in later phase and could be added as separate parts to the current document..

Based on these directions, the AISC Panel on ITS has prepared this AIS-140 titled, “Intelligent Transportation Systems (ITS) - Requirements for Public Transport Vehicle Operation”

The panel has also deliberated and identified the necessary elements for an effective implementation of vehicle level ITS system.

This standard has been prepared by considering inputs received from all stake holders on ITS, mainly -

- a. Directions of CMVR-TSC
- b. Detailed Specification Document on Vehicle Tracking Devices (dated 4<sup>th</sup> March 2015, published by MoRTH)
- c. Report of Department of Telecom (Telecom Engineering Centre) Automotive Working Group on M2M enablement in Intelligent Transport System (ITS)

This AIS on ITS, has been provisioned for device level approval; including construction and target vehicle level approval. Device level approval is needed to enable retro-fitment of ITS systems on in-use vehicles. This will ensure ITS Backend Control Centre infrastructure already presents with the STUs can be more fully utilized and make the investment in the Backend Control Centre infrastructure more viable.

As per the direction of CMVR-TSC which needed the Communication Protocol and Backend Control Centre requirement for tracking and handling the alerts to be detailed, the same has been addressed in Section 6 & 7, as detailed below.

- The devices would transmit data to the Backend Control Centre using 2G/3G/4G wireless connectivity (with SMS fall back) as per the protocol provided in respective sections (Section 6).
- The data from the devices would travel over the wireless telecom service provider network and finally get delivered at the Backend Control Centre. The detail about Device to Backend Communication Mechanism is mentioned in Section 7.

BIS and AIS both have panels which are formulating standards on ITS. It is our belief that taking the AIS route for the 1<sup>st</sup> implementation would give the faster time for adoption. Experts in the BIS panel and in DIMTS who are working on these subjects have been co-opted and invited to work in the AIS panel to make the AIS as robust as possible. Once implemented and all implementation problems in this emerging technology have been eliminated, BIS standard can be made with further inclusions if any resulting from consultations with the wider stakeholder community. Because of these reasons, we recommend the AIS route for regulation creation and first implementation.

One of the major concerns which has been raised during the panel meetings is on the issue of privacy encroachments by ITS systems. Some overseas member countries of the 1958 agreement have been continuously emphasizing in WP29 forums that the regulated ITS system must not encroach on privacy. Towards this, the panel has submitted a document titled 'Data Privacy in Transportation ITS' To help the system developers deal with these issues. Further, system developer can also take guidance from 'IS/ISO/TR 12859: 2009 - Intelligent Transport Systems — System Architecture — Privacy Aspects in ITS Standards and Systems' while developing their systems to meet the requirements of this standard. The Panel and the Automotive Industry Standards Committee (AISC) responsible for preparation of this standard are given in Annexure-D and Annexure -E respectively.

<b>CONTENTS</b>		
<b>Clause No.</b>	<b>Details</b>	<b>Page No.</b>
1.0	Scope	1/40
2.0	Application For CMVR Type Approval	3/40
3.0	ITS Functions and Requirements	4/40
4.0	Communication Protocol	10/40
5.0	Construction and Installation	16/40
6.0	Functional, Performance, Durability, Environmental and Protocol Tests	17/40
7.0	Device to Backend Communication Mechanism	31/40
<b>List of Annexures</b>		
ANNEXURE-A	Information to be Submitted for Type Approval	34/40
ANNEXURE-B	Criteria for Extension of Type Approval	35/40
ANNEXURE-C	Physical Interfaces (Connectors) for Power and I/Os	36/40
ANNEXURE-D	Composition of Panel	38/40
ANNEXURE-E	Committee Composition	40/40

## **Intelligent Transportation Systems (ITS) - Requirements for Public Transport Vehicle Operation**

### **1.0 SCOPE**

**1.A.0** This standard applies to both individual components as well as system environment intended to be used in Public transport vehicles.

### **1.A.1 INTELLIGENT TRANSPORTATION SYSTEMS-VLT WITH AN EMERGENCY SYSTEM**

Requirements on ITS devices and functions - Vehicle Location Tracking and Emergency Button.

### **1.B.0 DEFINITIONS:**

For the purpose of this standard, definitions are given below:

**1.B.1 “Acquisition sensitivity”** refers to the minimum signal level at which the device is able to successfully perform a cold start TTFF. The acquisition sensitivity test is a simulated signal test.

**1.B.2 “Assisted GPS (A-GPS)”** is a system allowing satellite receivers to obtain information from communication network resources to assist in acquiring satellite location. A-GPS system is especially useful when the receiver is in a location where it is difficult for the satellite signals to penetrate. In addition to providing better coverage, A-GPS also improves the start-up time, which is the time required by the satellites and the receivers to establish a reliable connection.

**1.B.3 “Circular Error Probability (CEP)”** is defined as the radius of a circle centered on the true value that contains 50% of the actual GPS measurements. So a receiver with 5 meter CEP accuracy will be within 5 meter of the true measurement 50% of the time. The other 50% of the time the measurement will be in error by more than one meter.

**1.B.4 “Dilution of Precision (DOP)”** is the degree of proximity of the location data to their mean value. The relative position of satellites affects the accuracy of location calculation by the locating module. Location coordinates computed when the satellites are clustered together suffer from dilution of precision (DOP), a factor that multiplies the associated errors. The DOP for an ideal satellites constellation arrangement equals close to 1, which does not magnify the underlying errors.

### **1.B.5 “Distance Root Mean Square (DRMS also called RMS, 1Sigma)”**

This is computed as square root of the average of the squared horizontal position errors with 65% probability. The position expressed has the probability of being within a circle with radius with 65% probability. A locating module with 6 metre DRMS accuracy would be within 6 meters of its actual position 65% of the time.

- 1.B.6 **“Emergency Button”** A button provided in vehicle for passengers or crew members to send specialized data packet /SMS to Centralized regulatory server to indicate safety/panic situation caused by human or natural disaster or vehicle accident etc.
- 1.B.7 **“Global Positioning System (GPS)”** is a space-based radio navigation system. It provides positioning, navigation, and timing services to military and civilian users on a continuous basis.
- 1.B.8 **“Sensitivity”** refers to the minimum signal strength level at which locating module can successfully perform a location fix. A GNSS locating module has two different sensitivity levels – acquisition sensitivity and tracking sensitivity.
- 1.B.9 **“Time to First Fix (TTFF)”** describes the time required for a tracking device to acquire adequate satellite signals and related data (almanac and ephemeris data) to compute location.
- 1.B.10 **“Tracking Sensitivity”** refers to the minimum signal level at which the device is able to successfully maintain the location fix. The acquisition sensitivity test is a simulated signal test.
- 1.B.11 **“Vehicle Location Tracking (VLT)”** device uses satellite based location technology to determine and record the precise location of a vehicle at regular intervals. The location data so determined can be stored within the device, and/or can be transmitted to the Backend Control Centre using a wireless communication modem built in the device.

## 1.C REFERENCES:

The References are listed below.

- 1.C.1 National Level Vehicle Security and Tracking System – Detailed Specification Document on Vehicle Tracking Devices (GPS) (Published by MoRTH MoRTH).
- 1.C.2 APTA TCIP - American Public Transportation Association (APTA) Standard for Transit Communications Interface Profiles (TCIP)
- 1.C.3 EBSF - European Bus System of the Future
- 1.C.4 ISO 11898-1:2003 Road vehicles — Controller area network (CAN)
- 1.C.5 SAE J 1939 Recommended Practice for a Serial Control and Communications Vehicle Network.
- 1.C.6 Bus-FMS-Standard
- 1.C.7 SAE USCAR 18 / USCAR18-3 - FAKRA SMB RF CONNECTOR SUPPLEMENT
- 1.C.8 National ITS Architecture - U.S. Department of Transportation
- 1.C.9 ISO 17185-1:2014 - Intelligent transport systems — Public transport user information — Part 1: Standards framework for public information systems

- 1.C.10 Trans model Standard (CEN/TC 278 WG3/SG4, Reference Entity-Relationship Data Model for Public Transport) - European reference data model for Public Transport operations developed within several European Projects - EN 12896:2006
- 1.C.11 Specification for Entity-Relationship for describing the main fixed objects in Public transport CEN/TC 278, 2008 - EN 28701:2012
- 1.C.12 RTIG (Real Time Information Group Ltd) - Digital Air Interface Protocol
- 1.C.13 SIRI (Service Interface for Real Time Information) European Technical Specification (TS) - CEN/TS 15531
- 1.C.14 NeTEx-Network Exchange European Technical Specification (TS) CEN/TS 16614
- 1.C.15 NaPTAN (National Public Transport Access Node)
- 1.C.16 ISO 15638-15:2014 Intelligent transport systems – Framework for cooperative telematics applications for regulated vehicles (TARV) – Part 15: Vehicle location monitoring
- 1.C.17 ISO 15638-5:2013 Intelligent transport systems – Framework for collaborative Telematics Applications for Regulated commercial freight Vehicles (TARV) – Part 5: Generic vehicle information
- 1.C.18 NMEA-0183: The NMEA 0183 standard defines an electrical interface and data protocol for communications between marine instrumentation.
- 1.C.19 IS/ISO/TR 12859:2009 – Intelligent Transport System-System Architecture-Privacy Aspects in ITS standards and systems
- 1.C.20 Report of Department of Telecom (Telecom Engineering Centre) Automotive Working Group on M2M enablement in Intelligent Transport System (ITS)
- 1.C.21 URL: <http://tec.gov.in/pdf/M2M/M2M%20Enablement%20in%20ITS.pdf>

## **2.0 APPLICATION FOR CMVR TYPE APPROVAL**

- 2.1 The application for CMVR device level approval shall be accompanied by information on the system specification as mentioned in Annexure A.
- 2.2 Type approval shall involve following steps:
  - 2.2.1 **Device Approval:** Approval provided at Device level for compliance to this standard.

These approved devices can be fitted / retro-fitted by manufacturer/ dealer/ permit holder/system integrator in any vehicle model provided it shall meet installation requirements as mentioned in Clause No. 5 of this standard. For manufacturers seeking vehicle level approval with approved VLT with Emergency Buttons fitted shall only require installation approval as per the provisions of Clause 5 and Sub-Clause 6.1 of Clause 6.

## 2.3 **Modifications and Extension of Approval**

2.3.1 Every modification pertaining to the information, even if the changes are not technical in nature declared in accordance with clause 2.1, shall be intimated by the VLT with Emergency Button Manufacturer to the test agency.

2.3.1.1 If the changes are in parameters not related to the provisions, no further action need be taken.

2.3.1.2 If the changes are in parameters related to the provisions, the test agency, which has issued the certificate of compliance, may then consider, based on the justification provided by the VLT with Emergency Button Manufacturer and reviewed by the test agency, whether,

The model with the changed specifications still complies with provisions;

Or,

Any further verification is required to establish compliance.

2.3.2 In case of 2.3.1.2, tests for only those parameters which are affected by the modifications need be carried out based on Criteria for extension of type approval as per Annexure B.

2.3.3 In case of fulfilment of criterion of clause 2.3.1.1 or after results of further verification as per clause 2.3.1.2 are satisfactory, the approval of compliance shall be extended for the changes carried out.

## 3.0 **ITS FUNCTIONS AND REQUIREMENTS**

The list of ITS functions envisaged from this device type is set out below in Table 3A –

<b>Table 3A: List of ITS Functions and Sub Functions</b>	
<b>Function</b>	<b>Sub Functions</b>
Safety and Security	Emergency Buttons
	Vehicle Location Tracking (VLT)

The above functions and their requirements shall be met by only single device that can be interfaced by external emergency buttons. The communications to Backend Control Server (Government authorized server) shall be done by device as per the protocol and functionalities defined below.

### 3.1 **Vehicle Location Tracking (VLT) With Emergency Button**

#### 3.1.1 **Functional Requirements for VLT**

- 3.1.1.1 Device shall be capable of obtaining position information using Global Navigation Satellite System (GNSS). GNSS receiver specifications are as follows:
- Device shall be capable for operating in L and/or S band and include support for NAVIC/IRNSS (Indian Regional Navigation Satellite System) for devices installed on or after 1<sup>st</sup> April, 2018.
  - The Device shall support GAGAN, the Indian SBAS (Satellite Based Augmentation System).
  - Device shall have a position accuracy of minimum 2.5 m CEP or 6 m 2DRMS.
  - Device shall have an acquisition sensitivity of minimum (-) 148 dBm.
  - Device shall have a tracking sensitivity of minimum (-) 165 dBm.
  - Device shall have an internal antenna; however if in case of Integrated systems with vehicle / aftermarket OEM approved kits if the fitment location prevents the internal antenna from functioning, then external antenna shall be provided.
- 3.1.1.2 Device shall support standard minimum I/Os as mentioned: 4 Digital, 2 Analogue and 1 Serial Communication (e.g. RS232) for interfacing external systems (E.g. Digital input for Emergency request button interfacing).
- 3.1.1.3 Device shall be capable of transmitting data to Backend Control Server (Government authorized server) via Wide Area (Mobile) Communications network (GSM/GPRS) as per Communication Protocol in Section 4.
- 3.1.1.4 Device shall be capable of transmitting Position, Velocity and Time (PVT data) along with heading (direction of travel) to a Backend Control Server (Government authorized server) at configurable frequency as per Communication Protocol of Section 4.
- The fixed frequency shall be user configurable, minimum frequency shall be 5 sec during vehicle operation and not less than 10 minutes in sleep/IGN OFF) as per the protocol defined in Communication Protocol of Section 4.
- 3.1.1.5 Device shall be capable of transmitting data to minimum 2 different IP addresses (1 IP address for regulatory purpose (PVT data) and 1 IP address for Emergency response system other than the IP's required for Operational purpose).
- 3.1.1.6 On pressing of Emergency button, the system implementing VLT function shall send emergency Alert (Alert ID 10 as mentioned in Sub-section 4.2.1 of Communication Protocol Section 4) to the configured IP address(s) as per the Communication Protocol mentioned in Section 4. In the absence of GPRS network, the emergency alert shall be sent as SMS message along with vehicle location data to configured control center number(s). The SMS shall consist parameters as given in Sub-section 4.2.2.

- 3.1.1.7 Device shall have an internal back-up battery to support 4 hours of normal operations (to be tested for positional record transmission at a frequency of 60 sec).
- 3.1.1.8 Device shall be capable of transmitting alerts to the Backend Control Server (Government authorized server) directly. The applicable list of alerts is given in Section 4.2 (Alert ID 3 to 12) of Section 4.
- 3.1.1.9 Device shall support over the air software and configuration update.
- 3.1.1.10 Device shall support basic standard configuration (Mobile communications network settings, Backend Control Server (Government authorized server) details, data frequencies, alert thresholds etc.) as per configuration specification defined in Section 4.
- 3.1.1.11 Device shall support store and forward mechanism for all type of data (periodic data and alerts) meant for backend transmission. The system shall store data in internal memory during communication network unavailability and transmit the data when the connection resumes in last in first out (LIFO) manner. The live data shall be given higher priority for transmission than back log (stored data) at any point in time.
- 3.1.1.12 The Device shall have a unique identifier for identifying the VLT device and data. The unique ID shall be stored in a read only memory area so that it cannot be altered or overwritten by any person. The unique identifier may be Vehicle Identification number or IMEI (International Mobile Station Equipment Identity) Number.
- 3.1.1.13 Device shall store/write the registration number of the vehicle in the internal nonvolatile memory.
- 3.1.1.14 Device shall have an Embedded SIM.
- 3.1.1.15 Device shall be designed to operate between 8VDC and 32VDC using vehicle battery input voltage range 12 /24Volts.
- 3.1.1.16 Device shall have a sleep mode current  $\leq 20$  mA (If the function is implemented in a dedicated system/device).
- 3.1.1.17 Device shall support any operational GNSS system with 12 (minimum) acquisition channels.
- 3.1.1.18 The Device shall support:
  - Location on GPRS/SMS
  - Non-volatile memory to store min 40,000 positional log
  - Configurable backup SMS facility in case of GPRS failure
  - Capability to send serving and adjacent cell ID as well as network measurement report (NMR)

- 3.1.1.19 The Device GNSS module shall have:
- The capability of Hot start <5s
  - The capability of Warm start : < 30s
  - The capability of Cold start < 40 s
- 3.1.1.20 Device shall support Outputs as per NMEA 0183
- 3.1.1.21 The Device GPRS module shall have:
- Multi slot GPRS with In - built Quad-band GPRS module/Modem
  - GPRS class 10 or above
  - Support Embedded SIM to cater to the automotive operational requirement such as vibration, temperature and humidity and provide long life span with at least 10 years life and more than 1 million read/write cycles
  - GPRS module & SIM shall support
    - SMS, Data (GPRS, TCP/IP) and
    - Support multiple network OTA switching (on-demand/automatic) capabilities.
- 3.1.1.22 Device shall be dust, temperature, vibration, water splash resistant, IP 65 rated or better, tamper proof as per Section 6.
- 3.1.1.23 Device shall be manufactured using processes as per quality management standard for automotive industries i.e. ISO/TS 16949 updated from time to time.
- 3.1.1.24 Device shall support A-GPS (Assisted GPS).
- 3.1.1.25 Device shall have provision of secured data transmission to the Backend Control Centre from the devices through secured channel (e.g. secured dedicated APN).
- 3.1.1.26 Device shall have 3 axis accelerometer and 3 axis gyroscope for getting the alerts on harsh breaking harsh acceleration, and rash turning.
- 3.1.2 **Functional Requirement for Emergency System**
- 3.1.2.1 Passengers or in-vehicle crew present in the vehicle shall be able to make an emergency request by pressing the emergency button provided.
- 3.1.2.2 The emergency request function shall not exist as standalone. The function shall be part of Vehicle Location Tracking (VLT) system. An alert shall be sent to the Backend Control Server (Government authorized server) when emergency request is raised. De-activation shall always be from authorized government server who receives alert message i.e. NERS system as mentioned in Sub-section 4.2.2.

- 3.1.2.3 The Emergency Buttons will be 'Normally Closed' (NC) type. The form factor of Emergency Buttons will be such that the button is easy to press in the case of an emergency, and simultaneously also minimizes the possibility of accidental or unintended press thereby causing a false alert.
- 3.1.2.4 On pressing of Emergency button, the system implementing VLT function shall send emergency Alert (Alert ID 10 as mentioned in Sub-section 4.2.1 of Communication Protocol Section 4) to the Backend Control Server (Government authorized server) as per the Communication Protocol mentioned in Section 4. In the absence of GPRS network, the alert shall be sent as SMS message along with vehicle location data to configured control center number. The SMS shall consist of parameters as given in Sub-section 4.2.2.
- 3.1.2.5 In absence of both GPRS and GSM networks and on pressing of Emergency Button, the system implementing VLT function shall store the emergency Alert (Alert ID 10 as mentioned in Sub-section 4.2.1 of Communication Protocol Section 4). Once the GPRS or GSM is available, this alert information shall be sent on high priority to the configured IP addresses as per the communication protocol mentioned in Section 4 or as SMS message along with vehicle location data to configured control center number. The SMS shall consist of parameters as given in Sub-section 4.2.2.

### 3.1.3 **Configuration of Device Parameters Over the Air (OTA)**

The device shall support at least the below parameters to be configurable over the air (through SMS and GPRS). The updation shall be allowed only over an 'authenticated' channel:

1. Setting/ Change of the Primary or Secondary IP and port number
2. Setting/ Change of the APN
3. Set configuration parameter like sleep time, overspeed limit, harsh braking, harsh acceleration, rash turning threshold limits etc.
4. Emergency control SMS Centre Number(s)
5. Configuring the vehicle registration number
6. Configuring the frequency of data transmission in normal / Ignition state / OFF state sleep mode/ Emergency state, etc.
7. Configuring the time duration for Emergency state
8. Capability to reset the device
9. Command to get the IMEI of the device

Configurable commands must involve the following features:

- SET: For setting the parameters.
- GET: For enquiring regarding the parameters such as mobile number, GSM strength, vehicle number and other important parameters.
- CLR: For clearing certain commands, alarms, alerts etc.

After each SET, GET, CLR command the device should send alert to

Backend Control Centre, as mentioned in Section 4 Alert 12, giving the details of Mode, mobile no/ IP of control center sending commands.

#### 3.1.4 Tracking Device Health Monitoring Parameters

The device shall send status of health parameters at configurable interval and this threshold value shall also be configurable over the air. It shall be possible for health parameters to be fetched on demand via command as set out below in Table 3B.

<b>Table 3B: Health Monitoring Parameter</b>		
<b>Sl. No.</b>	<b>Field</b>	<b>Description</b>
1	Start Character	\$
2	Header	The header of the packet/ identifier
3	Vendor ID	Vendor identification header
4	Firmware Version	Version details of the Firmware used in EX.1.0.0
5	IMEI	Identified of the sending unit. 15 digit standard unique IMEI no.
6	Battery percentage	Indicates the internal battery charge percentage
7	Low battery threshold value	Indicates value on which low battery alert generated in percentage
8	Memory percentage	Indicates flash memory percentage used
9	Data update rate when ignition ON	Indicates Packet frequency on ignition ON
10	Data update rate when ignition OFF	Indicates Packet frequency on ignition OFF
11	Digital I/o status	Inputs connected to the device.
12	Analog I/o status	Analog input status
13	End character	*

#### 3.1.5 SMS Fall Back

In case of emergency state, (i.e. on pressing of Alert button), the device will shift to the SMS mode in case GPRS connectivity is not available. In such case, the device will send the Alert message and tracking data through SMS mode. Since SMS has the limitation of sending only 160 characters, so the tracking data to be sent in one SMS will have fields - IMEI, Latitude, Direction, Longitude, Direction, location fix, speed, Cell ID, LAC (Location Area Code), Date and Time as per emergency alert . The details is provided in Sub-section 4.2.2.

## 4.0 COMMUNICATION PROTOCOL

### 4.1 Data Frame Format

Table below (Table 4A) contains the listing of fields that the vehicle tracking devices would be required to send to the Backend Control Centre. The first 3 fields (Start character, Header for VLT with Emergency Buttons and Vendor ID, who has supplied the device) must be fixed in position as well as format (Header part of frame). Rest all other fields are required to be present in the location data sent by the devices to the backend, but can be in any sequence or with any separator between fields. The data value can be either in American Standard Code for Information Interchange (ASCII) or in HEX format. Device must transmit the Login message whenever it establishes (re-establishes after disconnection) its connectivity with Server with the specified fields. Login Message will carry following information:

- \$DeviceName – Vehicle number on which the device is installed.
- \$IMEI – 15 Digit IMEI number.
- \$Firmware – Version of the firmware used in the hardware.
- \$Protocol -Version of the frame format protocol.
- \$LastValidLocation – Last location info saved at the device.

<b>Table 4A: Data Message Format</b>		
<b>Field</b>	<b>Description</b>	<b>Sample Data</b>
Start Character	\$	\$
Header	The header of the packet/ identifier	
Vendor ID	Vendor identification header	
Firmware Version	Version details of the Firmware used in EX.1.0.0	1.0.0
Packet Type	Specify the packet type  NR = Normal EA = Emergency Alert TA = Tamper Alert (Optional) HP = Health Packet IN = Ignition On IF = Ignition Off BD = Vehicle Battery Disconnect BR = Vehicle Battery	Depending upon the context, every frame from tracking device must carry a qualification code. This helps to determine the state in which vehicle is at that time.

	Reconnect BL = Internal Battery Low	
Packet Status	L=Live or H= History	L
IMEI	Identified of the sending unit. 15 digit standard unique IMEI no.	123456789012345
Vehicle Reg. No	Mapped vehicle registration number	DL1PC9821
GPS Fix	1 = GPS fix OR 0 = GPS invalid	1
Date	Date value as per GPS date time per GPS date time (DDMMYYYY)	220714
Time	Time value as per GPS date time in UTC format (hhmmss)	050656
Latitude	Latitude value in decimal degrees (not less than 6 places)	28.758963
Latitude Dir	Latitude Direction. Example N=North, S= South	N
Longitude	Longitude value in decimal degrees (not less than 6 places).	77.6277844
Longitude Dir	Longitude Direction. E=East, W= West	W
Speed	Speed of Vehicle as Calculated by GPS module in VLT. (in km/hrs.) (Upto One Decimal Value)	25.1
Heading	Course over ground in degrees	310.56
No of Satellites	Number of satellites available for fix	8
Altitude	Altitude of the device in meters	183.5
PDOP	Positional dilution of precision	
HDOP	Horizontal dilution of precision	
Network Operator	Name of Network	INA Airtel

Name	Operator	
Ignition	1= Ignition On , 0 = Ignition Off	1
Main Power Status	0 = Vehicle Battery disconnected 1= Vehicle Battery reconnected	1
Main Input Voltage	Indicator showing source voltage in Volts.(Upto One Decimal Value)	12.5
Internal Battery Voltage	Indicator for level of battery charge remaining. (Upto One Decimal Value)	4.2
Emergency Status	1= On , 0 = Off	0
Tamper Alert (Optional)	C = Cover Closed, O = Cover Open	C
GSM Signal Strength	Value Ranging from 0 – 31	25
MCC	Mobile Country Code	404
MNC	Mobile Network Code	10
LAC	Location Area Code	00D6
Cell ID	GSM Cell ID	CFBD
NMR (Network Measurement Report) Neighbouring Cell ID	Neighbouring 4 cell ID along with their LAC & signal strength	
Digital Input Status	4 external digital input status (Status of Input 1 to Input 3 (0=Off; 1=On))	0001
Digital Output Status	2 external digital output status (0=Off; 1=On)	01
Frame Number	Sequence Number of the messages (000001 to 999999)	000005
Checksum	Insures No error in transmission (optimal)	16
End Character	Indicated End of the frame	*

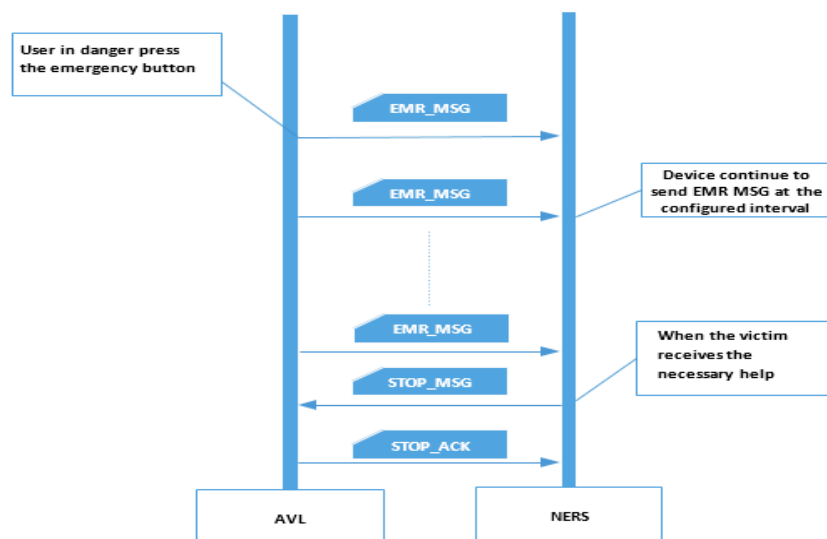
## 4.2 Messages & Alerts from Devices

4.2.1 Table below (Table 4B) contains the listing of alerts that need to come from the tracking devices. These alerts are applicable for both live packets as well as the history packets.

<b>Table 4B:</b> <b>Messages &amp; Alerts Supported</b>		
<b>Alert ID</b>	<b>Message &amp; Alerts</b>	<b>Remarks</b>
1.	Location Update	Default message coming from each device
2.	Location Update (history)	Would be sent, if GPRS is not available at the time of sending the message in protocol format Zero, BLANK, NIL, etc.
3.	Alert – Disconnect from main battery	If device is disconnected from vehicle battery and running on its internal battery
4.	Alert – Low battery	If device internal battery has fallen below a defined threshold
5.	Alert – Low battery removed	Indicates that device internal battery is charged again
6.	Alert – Connect back to main battery	Indicates that device is connected back to main battery
7.	Alert – Ignition ON	Indicates that Vehicle's Ignition is switched ON
8.	Alert – Ignition OFF	Indicates that Vehicle's Ignition is switched OFF
9.	Alert – GPS box opened (Optional)	Optional message would be generated indicating GPS box opened
10.	Alert – Emergency state ON*	When any of the emergency button is pressed
11.	Alert – emergency State OFF	When emergency state of vehicle is removed
12.	Alert Over the air parameter change	When any parameter is changed over the air. Shall include the name of parameter changed and source of command
13.	Harsh Braking	Alert indicating for harsh braking.
14.	Harsh Acceleration	Alert indicating for harsh acceleration.

15.	Rash Turning	Alert indicating for Rash turning.
16	Device Tempered	Alert Indicating Emergency button wire disconnect/ wire cut etc.

4.2.2 In case of emergency alert, the alert message shall be sent to 2 different IP addresses hence the device shall support minimum 2 IP addresses (1 IP address for regulatory purpose (PVT data) and 1 IP address for Emergency response system other than the IP's required for Operational purpose. The PVT data will send the emergency alert to the system. Primary alert will go to the emergency response Backend Control Centre (NERS/ MHA) as may be notified by the Government of India in the schema below:



Primary alert will go to the emergency response Backend Control Centre as notified by the Government of India in the indicative format below (Table 4C):

Table 4C: Indicative Format for Alert to Emergency Response System		
Attribute	Value / Description	Size
Packet Header	EPB, The unique identifier for all messages from VLT	Character, 3 bytes
Packet Header	EPB, The unique identifier for all messages from VLT	Character, 3 bytes
Message Type	Message Types supported. Emergency Message (EMR) or Stop Message (SEM)	Character, 2 bytes
Vehicle ID	Unique ID of the Vehicle (IMEI Number)	Character, 15 bytes
Packet Type	NM – Normal Packet, SP – Stored Packet	Character, 2 bytes

Date	Date and time of location the location obtained from the data in DDMMYYYY hhmmss format	Character, 14 bytes
GPS Validity	A – Valid, V – Invalid	Character, 1 byte
Latitude	Latitude in decimal degrees - dd.mmmmmm format	Double, 12 bytes
Latitude Direction	N – North, S – South	Character, 1 byte
Longitude	Longitude in decimal degrees - dd.mmmmmm format	Double, 12 bytes
Longitude Direction	E – East W – West	Character, 1 byte
Altitude	Altitude in meters (above sea level)	Double, 12 bytes
Speed	Speed of Vehicle as Calculated by GPS module in VLT. (in km/hr)	Float, 6 bytes
Distance	Distance calculated from previous GPS data	Float, 6 bytes
Provider	G - Fine GPS N - Coarse GPS or data from the network	Character, 1 byte
Vehicle RegnNo	Registration Number of the Vehicle	Character, 16 bytes
Reply Number	The mobile number to which Test response needs to be sent. (Emergency Mobile No. as specified by MHA/MoRTH/States.)	0
CRC	The 32 bit checksum of all the characters from the header up to the CRC field	8 bytes

\*Above format is indicative only. These Format will be notified by the Government of India time to time.

#### 4.3 **Testing of Configuration of Device Parameters Over the Air (OTA)**

The following testing will be done for

1. Setting/ Change of the Primary or Secondary IP and port number
2. Setting/ Change of the APN
3. Set configuration, parameter like sleep time for speed, harsh braking, rash turns, etc.

4. Emergency SMS Centre Number
5. Configuring the vehicle registration number
6. Configuring the frequency of data transmission in normal / Ignition state / OFF state sleep mode, Emergency state, etc.
7. Configuring the time duration for Emergency state
8. Capability to reset the device
9. Command to get the IMEI of the device

Configurable commands must involve the following features:

- SET: For setting the parameters.
- GET: For enquiring regarding the parameters such as mobile number, GSM strength, vehicle number and other important parameters.
- CLR: For clearing certain commands, alarms, alerts etc.

## **5.0 CONSTRUCTION AND INSTALLATION**

(To be verified on component level and target vehicle level approval)

### **5.1 Requirements on vehicle interface for VLT with Emergency Button**

Connector for Power

The requirements for interface shall be as below or as agreed between vehicle manufacturer and device manufacturer.

Standard connectors conforming to ISO 15170 shall be used at vehicle side. Connector requirements shall be as per Annexure – C, Clause 1.1 (Sl. No 1 - Low power systems 1)

However, Device/System side connector/s shall be pre-agreed with equipment manufacturer by

- Vehicle OEM in the case of OE fitment of the systems
- System supplier in case of retro fitment in aftermarket.

These requirements do not apply to integrated systems with vehicle where integration is done by vehicle manufacturer and /or System Integrator.

### **5.2 Requirement of Emergency System**

Emergency button shall be one time press type. Separate release action from authorized server shall be required to bring back the emergency button to normal mode or clear emergency flag.

### **5.3 Physical Mounting**

The VLT system shall be mounted in a suitable location such a way that it is not easily accessible /exposed to passengers.

This requirement shall not be applicable in case of combined systems VLT with HMI (Human Machine Interface) display in front of driver.

Test agency to verify this on vehicle level approval.

Emergency button(s) shall be fitted in such a way that every passenger including driver shall be able to access the Emergency button(s).

Passenger Car shall have 2 emergency buttons on each passenger row easily assessable by each of the passenger. There shall also be one dedicated emergency button for the driver.

Passenger Transport bus shall have emergency buttons at locations easily visible & assessable to all the passengers such as every 2 meters on both the sides on passenger seating area. For seats reserved for ladies there shall be a dedicated panic button for each row.

Test agency to verify this on vehicle level approval.

#### 5.4 **Power Supply**

The vehicle tracking device will be installed on vehicles in which the power supply voltage from vehicle battery is widely varying (12V, 24V etc.) and also the power supply is not as stable as that in case of fixed locations, especially during engine start-up and braking when the voltage can fall to as low as 9V. Typically electronic devices are very sensitive to power surges and spikes, and equipment may fail if they do not receive stable power supply. The devices will need to have a resilient power supply unit that can withstand such fluctuations and the devices also need to have power backup so that they continue to function for some duration when the vehicle battery is not functional or is disconnected from the devices.

Vehicle power interface shall have

- One common ground linked to vehicle chassis
- One permanent power Supply (12/24V) connected to the vehicle battery
- One non-permanent power line (12/24V) connect to the battery after ignition

##### 5.4.1 **Electrical Wiring**

The wiring harness used in the device shall be tested for flammability as per IS 2465.

## 6.0 **FUNCTIONAL, PERFORMANCE, DURABILITY, ENVIRONMENTAL AND PROTOCOL TESTS**

### 6.1 **Vehicle Level Functional Tests**

Following functionalities for each of the systems shall be demonstrated at the vehicle, in case system is provided by the vehicle OEM.

#### 6.1.1 **Vehicle Location Tracking With Emergency Button**

##### 6.1.1.1 Vehicle OEM shall only provide/ installed devices approved under component level testing.

##### 6.1.1.2 System transmits PVT information to Backend Control Center (2 different IPs) at user configurable frequency (minimum 5 seconds) via GSM/GPRS.

6.1.1.3 System to communicate to control center on the occurrence of the alerts captured in Communication Protocol of Section 4.

6.1.2 **Emergency Request**

Emergency request function - When the emergency buttons (as applicable) placed anywhere in the vehicle is pressed by any passenger / crew, make sure that the emergency request message is send/received at the control center.

6.2 **Component Level Functional Tests**

Following functionalities for each of the systems shall be demonstrated. At the choice of the manufacturer, these functionalities can also be alternately demonstrated at the vehicle level and shall be deemed to be complied with at component level as well.

6.2.1 **Vehicle Location Tracking**

6.2.1.1 Standard connector provided for Power and other signals as per Annexure C.

6.2.1.2 Configuration of device as per the standard format mentioned in Section 4.

Local configuration upload shall be verified.

Configuration upload from control center shall be verified.

6.2.1.3 Vehicle Location data transmission to Backend Control Center.

6.2.1.4 Backend Control Centre shall be able to check the version of firmware loaded on the system.

6.2.1.5 Update the firmware of the system from Backend Control Centre

6.3 **Device Level Functional, Performance & Durability Tests**

The tests to be performed for device level approvals are as listed below. These functionality check will be performed after each test as acceptance criteria –

Tested systems shall satisfy general functional requirements at all the specified ranges during the test and after the test.

Following to be checked after testing:

- i) Tracking functionality shall be checked via Backend Control Centre for the VLT system (Functional Test number 1 as per “Table 6A Functional Testing”.

6.3.1 **Functional Testing**

Functional Testing as described in the Table 6A below shall be done with the acceptance criteria in Table 6A after completion of all the Performance & Durability Tests as listed in Table 6B.

**Table 6A:  
Functional Testing**

Sl. No	Test	Test Procedure
1	Tracking Functionality Test	<p>The test shall be conducted on VTL to determine the proper functioning of VLT with Emergency Button by testing its connectivity to Backend Control Centre (Government authorized server).</p> <p>Procedure: The VLT with Emergency Button shall be connected to vehicle battery to switch it on. The VLT with Emergency Button shall be tested for the connectivity to server and its capability to send two location messages</p>
2	Location Accuracy Test	<p>This test shall be conducted on VLT with Emergency Button.</p> <div data-bbox="810 952 1260 1104" data-label="Diagram"> </div> <p>The receiver is placed into a cold start state – usually by a command sent to the receiver through a test connection – and then a fairly strong navigation signal simulating in L and/or S band is sent. The time it takes for the receiver to determine its first good location fix is recorded. Test is done many times (&gt;15 times) over many conditions and the results are averaged.</p> <p><b>Acceptance Criteria:</b> 2.5 m CEP or 6 m 2DRMS</p>
3	Acquisition Sensitivity Test	<p>This test shall be conducted on VLT with Emergency Button.</p> <p><b>Procedure:</b> Set the simulator to output navigation signal simulating L and/or S band to a particular location with a very level so that the tracking is not possible. Gradually increase the signal level that allows the receiver to successfully perform a cold start TTFF within a specified time frame. The minimum signal level that allows acquisition</p>

		<p>is referred as to the acquisition sensitivity.</p> <p><b>Acceptance Criteria:</b> The acquisition sensitivity shall be minimum (-) 148 dBm.</p>
4	Tracking Sensitivity Test	<p>This test shall be conducted on VLT.</p> <p><b>Procedure:</b> The device under this test is locked on to the simulator's output frequency (navigation signal simulating L and/or S band) and the simulator power output is lowered until the lock is lost. Multiple repetition of the test with different satellite geometries ensures that an accurate average measure is recorded.</p> <p><b>Acceptance Criteria:</b> The tracking sensitivity shall be equal to or better than (-) 165 dBm.</p>
5	Cold-Start Time to First Fix (TTFF) Test	<p>The device in this test is placed into a cold start state. The time it takes for the device to determine its first good location fix is recorded. The cold start test is performed several times and the results are averaged.</p> <p><b>Acceptance Criteria:</b> The cold start TTFF shall be less than 40 seconds at Open Sky condition or (-) 130 dBm.</p>
6	Warm-Start Time to First Fix Test	<p>In this test the device is started in warm start mode and time taken by device to determine the first valid location fix is recorded. This is done several times and results are averaged.</p> <p><b>Acceptance Criteria:</b> The warm start TTFF shall be less than 30 seconds at Open Sky condition or (-) 130 dBm.</p>
7	Hot-Start Time to First Fix Test	<p>In this test the device is started in Hot start mode and time taken by device to determine the first valid location fix is recorded. This test is performed several times and results are averaged.</p> <p><b>Acceptance Criteria:</b> The hot start TTFF shall be less than 5 seconds.</p>
8	SIM Test	<p>This test is to check the suitability of the SIM and communication module. The test shall be conducted to determine the effectiveness and operation of the GPRS module with OTA network switching capabilities on demand as well as automatically in real-time. The test consist of two type of testing as below:</p>

		<p>1. The device would be tested to perform as per the protocol using an embedded SIM.</p> <p>2. The GPRS module &amp; SIM, shall support:</p> <ul style="list-style-type: none"> <li>○ SMS, Data (GPRS, TCP/IP) and</li> <li>○ Support multiple network OTA switching capabilities (On Demand as well as Automatic Switching on real-time basis)</li> </ul> <p><b>Acceptance Criteria:</b> In the testing, vendors has to demonstrate the embedded SIM based tracking and multiple network OTA switching capabilities (On Demand as well as Automatic Switching on real-time basis) for effective network management and transmission.</p>
9	Interference Test	<p>Interference testing is a type of test, in which Cold Start/Hot Start test are performed with device exposed to interfering signals and the performance as recorded. In this test, the GPS receiver is turned on and allowed to achieve a location fix. The jamming signal is then added to the GPS signal at a level that is detectable to the GPS receiver. The jamming signal power level is increased in 1 dB increments until the first degradation of the GPS receiver is noticed. This is typically a dropped satellite. The jamming signal power level is again slowly increased until the GPS receiver loses its 3D navigation fix.</p> <p><b>Acceptance Criteria:</b> The Interference shall not result in any degradation of the Cold Start/Hot Start TTFF times. In addition, it shall not result in any degradation of the absolute location accuracy required and the same shall be 2.5 m CEP or 6 m 2DRMS.</p>
10	Multipath Test	<p>This test is a simulated frequency test conducted to determine the effect of multipath signals. The signal from a single satellite is simulated to arrive at the device via two or more paths. One path is typically a direct path, and other paths are typically a reflection of the same signal from building or structure. Multipath testing is a kind of a meta-test in that some of the above tests are done with the addition of multi-path simulation of one or more satellites by the GPS signal simulator.</p>

		<p><b>Acceptance Criteria:</b> The multipath shall not result in any degradation of the Cold Start/Hot Start TTFF times. In addition, it should not result in any degradation of the absolute location accuracy required and the same shall be 2.5 m CEP or 6 m 2DRMS.</p>
--	--	--

### 6.3.2 Performance & Durability Test

The Performance & Durability Test is listed in Table 6B.

<b>Table 6B:</b> <b>Performance &amp; Durability Test</b>		
Sl. No	Test	Test Procedure
1	Shock Test	<p>Shock test is performed to provide a degree of confidence that the device can physically and functionally withstand the relatively infrequent, non-repetitive shocks encountered in transportation environments. This test provides an assessment of the effect of the shocks on the performance of the device. The test shall be performed as per IS 9000-part 7 – 2006. Severity Level = 15g, Impact duration = 11ms, Impact Type = Half sine, Total number of impact = 9 (3 on each axis)</p> <p><b>Acceptance Criteria:</b> Device after the shock test shall be required to meet the provisions of Functional Test Number 1 as listed in Table 6A.</p>
2	Vibration Test	<p>This test is performed to check that the device the device can physically and functionally withstand the vibration exposures in the life cycle typically encountered in a vehicular environment. The test shall be performed as per IS 9000-part 8 – 1981. The test specimen mounted on a suitable support shall be rigidly fixed on a suitable vibrating machine constructed to produce simple harmonic function (total amplitude of 1.5 mm) and shall be subjected to vibration through a frequency range of 10-55-10 Hz in a sweep period of 1 min with continuously varying frequencies. The vibration shall be applied for not less than 1 h in the directions of each of the 3 major axes of the light.</p> <p><b>Acceptance Criteria:</b> During and after the test the device shall be required to meet the provisions of Functional Test Number 1 as listed in Table 6A.</p>

3	Ingress Protection (IP)	<p>The vehicle tracking devices must be able to work in dusty environment that are typically encountered by the public transport vehicles where these would be installed. IP rating (IS/IEC 60529 - 2001) is used for specifying the environmental protection characteristics of the tracking device. The device will be tested for dust and water ingress according to IP 65 rating.</p> <p><b>Acceptance Criteria:</b> The device shall be required to meet the provisions of Functional Test Number 1 as listed in Table 6A.</p>
4	EMI/EMC	<p>The Electromagnetic Interference (EMI) and Electromagnetic Compatibility (EMC) tests are performed to assess whether the device performs its intended functions in the electromagnetic environment to which it would be exposed. Further, the device shall not generate electromagnetic disturbances that may influence other equipment in the vicinity.</p> <p><b>Acceptance Criteria:</b> The device shall meet the EMI/EMC requirements as per AIS 004 (Part 3).</p>
5	Battery Backup Test	<p>Battery backup is the amount of time that the device battery can support sending the data without being connected to the power source. This test will be performed by disconnecting the input charging voltage to the device. On disconnecting the external supply, battery would use its charge capacity to send data through GPRS. Time duration between external power disconnect to the last data packet time denotes the battery backup time.</p> <p><b>Acceptance Criteria:</b> Device shall be able to work in active mode for a period of 4 hours or more at the polling/ transmission rate of 60 sec</p>
6	Reverse Polarity Protection without Fuse	<p>The device to be tested shall be connected to a reversed voltage of 14 V for 12 V systems and 27 V for 24 V systems for 2 min after connecting the system to the suitable circuit.</p> <p><b>Acceptance Criteria:</b> After test; the device shall be required to meet the provisions of Functional Test Number 1 as listed in Table 6A.</p>

7	Wiring Harness - Flammability Test	<b>Flammability Test:</b> The wiring harness used in the device shall be tested for flammability as per IS 2465.																				
8	Wiring Harness - Electrical Properties	As per AIS 028 or DIN72551 or ISO 6722																				
9	Free Fall	IS 9000 (Part VII/Sec 4) Free fall at 500 mm.  <b>Acceptance Criteria:</b> After test the device shall be required to meet the provisions of Functional Test Number 1 as listed in Table A																				
10	Performance Parametric Test  (Nine points, tri temperature/tri voltage)	<p>During testing, VLT with Emergency button shall be kept inside test chamber in power ON condition.</p> <p>(System shall be stabilized for minimum 5 min at each condition.</p> <p>At each test point the system will be powered on and shut down 5 times with a duration of 1 min ON and 1 min OFF time)</p> <p>Following are the various voltages &amp; temperatures</p> <table><tr><td>24V System</td><td>12V System</td></tr><tr><td>18V, -25°C</td><td>9V, -25°C</td></tr><tr><td>18V, +80°C</td><td>9V, +80°C</td></tr><tr><td>18V, Room Temperature</td><td>9V, Room Temperature</td></tr><tr><td>27V, -25°C</td><td>13.5V, -25°C</td></tr><tr><td>27V, +80°C</td><td>13.5V, +80°C</td></tr><tr><td>27V, Room Temperature</td><td>13.5 V, Room Temperature</td></tr><tr><td>32V, -25°C</td><td>16V, -25°C</td></tr><tr><td>32V, +80°C</td><td>16V, +80°C</td></tr><tr><td>32V, Room Temperature</td><td>16V, Room Temperature</td></tr></table> <p><b>Acceptance Criteria:</b> The device shall be required to meet the provisions of Functional Test Number 1 as listed in Table A for each value of the temperature and voltage.</p>	24V System	12V System	18V, -25°C	9V, -25°C	18V, +80°C	9V, +80°C	18V, Room Temperature	9V, Room Temperature	27V, -25°C	13.5V, -25°C	27V, +80°C	13.5V, +80°C	27V, Room Temperature	13.5 V, Room Temperature	32V, -25°C	16V, -25°C	32V, +80°C	16V, +80°C	32V, Room Temperature	16V, Room Temperature
24V System	12V System																					
18V, -25°C	9V, -25°C																					
18V, +80°C	9V, +80°C																					
18V, Room Temperature	9V, Room Temperature																					
27V, -25°C	13.5V, -25°C																					
27V, +80°C	13.5V, +80°C																					
27V, Room Temperature	13.5 V, Room Temperature																					
32V, -25°C	16V, -25°C																					
32V, +80°C	16V, +80°C																					
32V, Room Temperature	16V, Room Temperature																					

11	Insulation Resistance Test	<p>Test shall be conducted as per ISO 16750-2:2010 after damp heat test mentioned in point 3 of the Section 6.4.</p> <p>System/components shall remain 0.5 h at RT after the damp heat test.</p> <p>Test shall be conducted With a voltage of 500 V DC. Acceptance Criteria: Insulation Resistance shall be <math>&gt; 1 \text{ M}\Omega</math>.</p> <p>No arcing or puncturing of insulation allowed shall be observed</p>
12	Load Dump Test Pulse 5a	<p>VLT shall be tested for this.</p> <p>For 12 V System:</p> <p>A Voltage spike of 65V, 4 Ohms 200ms pulse-5a as per standard ISO 7637-2: 2004</p> <p>For 24 V System:</p> <p>A Voltage spike of 123V, 8 Ohms 200ms pulse-5a as per standard ISO 7637-2: 2004.</p> <p><b>Acceptance Criteria:</b> Device shall meet functional class A as per ISO 7637-2: 2004. After test, the device shall be required to meet the provisions of Functional Test Number 1 as listed in Table 6A.</p>

### 6.3.3 Device Level Environmental Tests

The environmental tests to be performed for device level approvals are as listed in Table 6C.

Following to be checked after testing:

- i) Tracking functionality shall be checked via Backend Control Centre for the VLT with Emergency Button.

Table 6C: Device Level Environmental Test		
Sl. No	Test	Test Procedure
1	Dry Heat / High Temperature Test	<p>The high temperature test is used to evaluate effects of high temperature conditions on safety, integrity, and performance of the device. The test shall be carried out in accordance with Indian Standard IS: 9000 (Part 3/Sec 5) the device shall be subjected to temperature of <math>70 \pm 2^\circ\text{C}</math> for 16 h in high temperature. Test with device in working condition. The recovery period shall be 2 h.</p>

		<b>Acceptance Criteria:</b> Device during and after the high temperature test the device shall be required to meet the provisions of Functional Test Number 1 as listed in Table 6A.
2	Cold Test	<p>The test shall be carried out in accordance with IS 9000 (Part 2/Sec 4 - 1977). The device under test shall be subjected to temperature of <math>-10 \pm 2^{\circ}\text{C}</math> for 2 h with device in working condition. The recovery period shall be 2 h.</p> <p><b>Acceptance Criteria:</b> Device during and after the cold test, the device shall be required to meet the provisions of Functional Test Number 1 as listed in Table 6A.</p>
3	Damp Heat Test	<p>The device under test shall be tested according to IS 9000 (Part 5/Sec 2 - 1981). The test is carried out at <math>+25^{\circ}</math> to <math>+55^{\circ}\text{C}</math>, Humidity 95%. Six cycles (each test cycle of 24 h) shall be run with device in off condition. Functional test shall be carried out with power in 'On condition' at start of 2nd, 4th and 6th cycle.</p> <p><b>Acceptance Criteria:</b> Device during and after the test the device shall be required to meet the provisions of Functional Test Number 1 as listed in Table 6A.</p>
4	Temperature Shock	<p>Temperature shock test is carried out to determine if the device can withstand sudden changes in the temperature of the surrounding atmosphere without experiencing physical damage or deterioration in performance. The device shall be tested as per IS 9000 (Part 14/Sec 2) – 1978. Exposure time would be 3 hours/cycle and number of cycles would be two.</p> <p><b>Acceptance Criteria:</b> Device after the test the device shall be required to meet the provisions of Functional Test Number 1 as listed in Table 6A.</p>
5	High Temperature Test	<p>The high temperature test is used to evaluate effects of high temperature conditions on safety, integrity, and performance of the device. The test shall be carried out in accordance with Indian Standard IS: 9000 (Part 3/Sec 5) the device shall be subjected to temperature of <math>70 \pm 2^{\circ}\text{C}</math> for 16 h in high temperature. Test with device in working condition. The recovery period shall be 2 h.</p> <p><b>Acceptance Criteria:</b> Device during and after the high temperature test the device shall be required to meet the provisions of Functional Test Number 1 as listed in Table 6A.</p>

6	Salt Spray Test	<p>The salt spray test is conducted to check corrosion resistance of device. The device shall be tested according to Clause 4.8 of IS 10250 for 96 h.</p> <p><b>Acceptance Criteria:</b> The device shall be required to meet the provisions of Functional Test Number 1 as listed in Table 6A.</p>
7	High Voltage Test	<p>The test is conducted to ensure service life requirements &amp; functionality. The device under test shall be operated for 60 minutes at 18 V for 12 V systems &amp; 36 V for 24 V systems. This test is as per ISO 16750-2:2010</p> <p><b>Acceptance Criteria:</b> Device during and after the test the device shall be required to meet the provisions of Functional Test Number 1 as listed in Table 6A.</p>

#### 6.3.4 Protocol Testing

**This set of testing needs to be done for all cases namely vehicle level testing and component (Device) level testing.**

Protocol is a set of rules to be followed by the device while sending data to the Backend Control Centre. The protocol comprises data update rate, number of fields, start character, end character, alert type etc. Protocol testing involves checking the compliance of data sets received by the Backend Control Centre against the protocol both with respect to the data fields as well the format. It is expected that the data coming to a central server shall be exactly as required under the protocol. Table below (Table 6D) mentions the validation process for the protocol communication.

<b>Table 6D:</b>	
<b>Protocol Testing Parameters</b>	
<b>Field Description Validation Process</b>	
<b>Field</b>	<b>Description</b>
Start Character	\$
Header	The header of the packet/ identifier
Vendor ID	Vendor identification header
Firmware Version	Version details of the Firmware used in EX.1.0.0
Packet Type	Specify the packet type – NR = Normal EA = Emergency Alert TA = Tamper Alert

	HP = Health Packet IN = Ignition On IF = Ignition Off BD = Vehicle Battery Disconnect BR = Vehicle Battery Reconnect BL = Internal Battery Low
Packet Status	L=Live or H= History
IMEI	Identified of the sending unit. 15 digit standard unique IMEI no.
Vehicle Reg. No	Mapped vehicle registration number
GPS Fix	1 = GPS fix OR 0 = GPS invalid
Date	Date value as per GPS date time (DDMMYYYY)
Time	Time value as per GPS date time in UTC format (hhmmss)
Latitude	Latitude value in decimal degrees (with minimum 6 decimal places)
Latitude Dir.	Latitude Direction. Example N=North, S= South
Longitude	Longitude value in decimal degrees (with minimum 6 decimal places)
Longitude Dir.	Longitude Direction. Example E=East, W= West
Speed	Speed of Vehicle as Calculated by GPS module in VLT.(in km/hr)
Heading	Course over ground in degrees
No. of Satellites	Number of satellites available for fix
Altitude	Altitude of the device in meters
PDOP	Positional dilution of precision
HDOP	Horizontal dilution of precision
Network Operator Name	Name of Network Operator.
Ignition	1= Ign On , 0 = Ign Off
Main Power Status	0 = Vehicle Battery Disconnected 1= Vehicle Battery Reconnected
Main Input Voltage	Indicator showing source voltage in Volts.
Internal Battery	Indicator for Level of battery charge remaining

Voltage	
Emergency Status	1= On , 0 = Off
Tamper Alert (Optional)	C = Cover Closed , O = Cover Open
GSM Signal Strength	Value Ranging from 0 – 31
MCC	Mobile Country Code
MNC	Mobile Network Code
LAC	Location Area Code
Cell ID	GSM Cell ID
NMR (neighbouring Cell ID)	Neighbouring 4 cell ID along with their LAC and signal strength
Digital Input Status	4 external digital input status (Status of Input 1 to Input 3 (0=Off; 1=On))
Digital Output Status	2 external digital output status (0=Off; 1=On)
Frame Number	Sequence Number of the messages (000001 to 999999)
Checksum	Insures No error in transmission (optional)
End Character	Indicated End of the frame
The following test would be performed along with the protocol testing of the device:	

**a) Memory Storage**

The device shall support 40000 or more positional logs/packets. This is a functional test and the device will be simulated to be in non – GPRS coverage area and the logs will be maintained. The capacity of logging will be checked by monitoring the logs on the device.

**b) Messages & Alerts from Devices**

Table below (Table 6E) contains the listing of alerts that need to come from the tracking devices. These alerts are applicable for both live packets as well as the history packets.

Table 6E: Messages & Alerts		
Alert ID	Message & Alerts	Remarks
1.	Location Update	Default message coming from each device
2.	Location Update (history)	Would be sent, if GPRS is not available at the time of sending the message
3.	Alert – Disconnect from main battery	If device is disconnected from vehicle battery and running on its internal battery

4.	Alert – Low battery	If device internal battery has fallen below a defined threshold
5.	Alert – Low battery removed	Indicates that device internal battery is charged again
6.	Alert – Connect back to main battery	Indicates that device is connected back to main battery
7.	Alert – Ignition ON	Indicates that Vehicle's Ignition is switched ON
8.	Alert – Ignition OFF	Indicates that Vehicle's Ignition is switched OFF
9.	Alert – GPS box opened (Optional)	Message would be generated indicating GPS box opened
10.	Alert – Emergency state ON*	When any of the emergency button is pressed
11.	Alert – emergency State OFF	Emergency state of switch will be cancelled by backend server, when emergency state of vehicle is removed
12.	Alert Over the air parameter change	When any parameter is changed over the air. Shall include the name of parameter changed and source of command
13.	Harsh Braking	Alert indicating for harsh braking.
14.	Harsh Acceleration	Alert indicating for harsh acceleration.
15.	Rash Turning	Alert indicating for Rash turning.

\* In case of Emergency Alert ON system, the alert message should go in the below format as set out in Table 6F. This emergency alert message shall be sent to 2 different IPs; i.e. the device shall support minimum 2 IPs simultaneously.

<b>Table 6F:</b>		
<b>Message Format</b>		
<b>Attribute</b>	<b>Value / Description</b>	<b>Size</b>
Packet Header	EPB, The unique identifier for all messages from VLT	Character, 3 bytes
Message Type	Message Types supported. Emergency Message (EMR) or Stop Message (SEM)	Character, 2 bytes

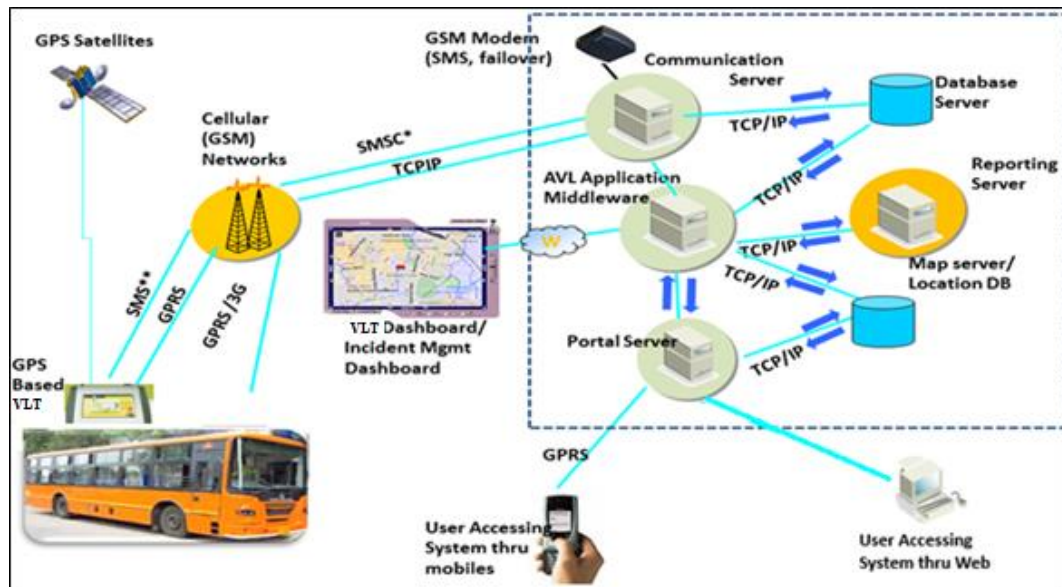
Device ID Vehicle ID	Unique ID of the Vehicle (IMEI Number)	Character, 15 bytes
Packet Type	NM – Normal Packet, SP – Stored Packet	Character, 2 bytes
Date	Date and time of the location obtained from the location data in DDMMYYYY hhmmss format	Character, 14 bytes
GPS Validity	A – Valid, V – Invalid	Character, 1 byte
Latitude	Latitude in decimal degrees - dd.mmmmmm format	Double, 12 bytes
Latitude Direction	N – North, S – South	Character, 1 byte
Longitude	Longitude in decimal degrees - dd.mmmmmm format	Double, 12 bytes
Longitude Direction	E – East W – West	Character, 1 byte
Altitude	Altitude in meters (above sea level)	Double, 12 bytes
Speed	Speed of Vehicle as Calculated by GPS module in VLT. (in km/hrs.)	Float, 6 bytes
Distance	Distance calculated from previous GPS data	Float, 6 bytes
Provider	G - Fine GPS N – Coarse GPS or data from the network	Character, 1 byte
Vehicle RegnNo	Registration Number of the Vehicle	Character, 16 bytes
Reply Number	The mobile number to which Test response need to be sent. (Emergency Mobile No. as specified by MHA/MoRTH/States.)	0
CRC	The 32 bit checksum of all the characters from the header up to the CRC field	8 bytes

## 7.0

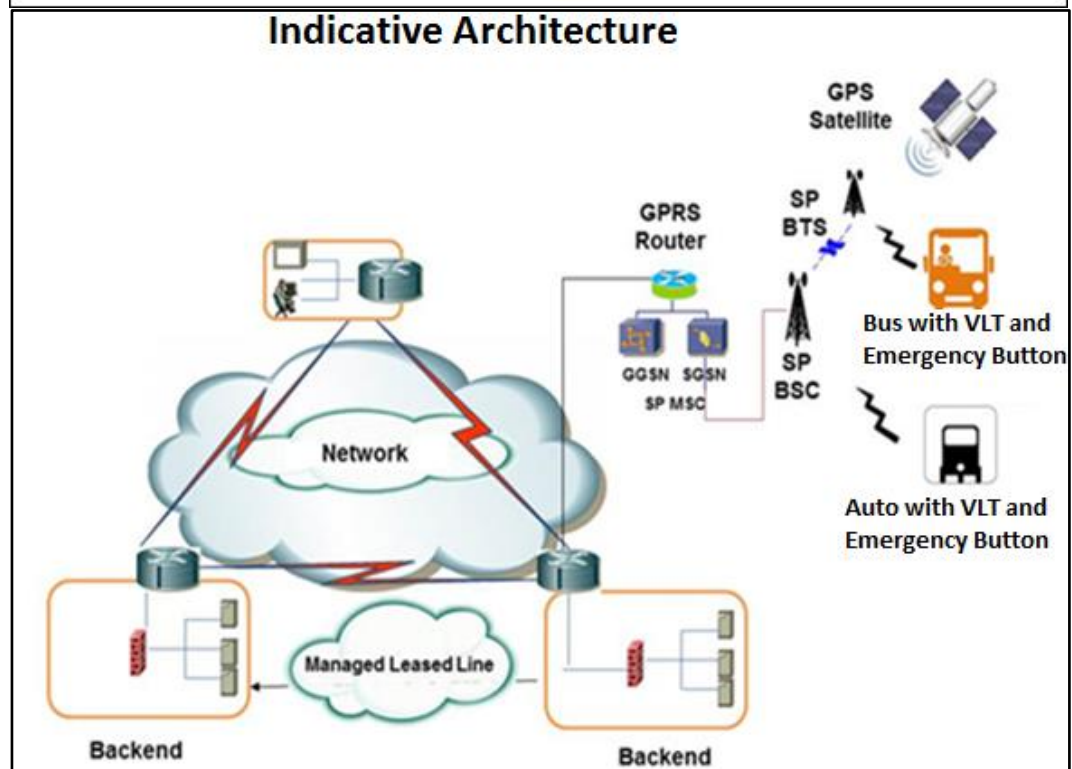
### DEVICE TO BACKEND COMMUNICATION MECHANISM

The VLT device would transmit data to the Backend Control Centre using GPRS wireless connectivity (with SMS fall back) as per the protocol provided in respective sections (Sub-section 6.3.4). The data from the devices would travel over the wireless telecom service provider network and finally get delivered at the Backend Control Centre. Since the permit holders/Device suppliers would require to have

a valid communication plan on SIM cards on the devices and would avail services from multiple telecom service providers, the data would be transmitted to the Backend Control Centre using the networks of multiple telecom service providers.



### Indicative Architecture



A suitable control mechanism would be established for the data transfer from VLT to Backend Control Centre, as only the authorized devices should be able to transfer data to the Backend Control Centre and a mechanism for authenticating the devices/SIMs shall also be put into place.

The following mandatory provisions will have to be made in the Backend Control Centre:

1. Registration and activation of the device(s) fitted on the vehicle, including the details of vehicle registration number, engine number, chassis number, vehicle make and model, device make and model, and telecom service provider's name.
2. Re-registration/re-activation of the device(s) fitted on the vehicle in case of any change in device or telecom service provider, etc.
3. Regular health check of the device(s) fitted on the vehicle, as per the parameters and frequency defined in Sub-section 3.1.4.
4. Administration/configuration of devices for any changes in the parameters as decided by the respective state from time to time.
5. Notification of alerts in case of press of an Alert Button fitted on the vehicle, in the protocol defined in Section 4.
6. Notification of alerts in case of defined deviations by vehicle such as over-speeding, deviation from defined route/geographic area, time of operation, etc.
7. Location tracking of the vehicle including real-time as well as history tracking for up to last 90 days.
8. Notification to the permit-holder through SMS in case any device(s) stops functioning/sending data to the Backend Control Centre.
9. Reports of the vehicles with devices not working/sending data beyond defined number of days (1 day, 3 days, 7 days and 30 days).
10. Ensure that the security and privacy of the data is maintained in accordance with applicable laws/guidelines of various government authorities.

In addition to the above mandatory provisions, the Backend Control Centre can provide any other optional features.

The mechanism to set up the Backend Control Centre shall be decided by the respective states. The states can choose any of the following options for setting up the Backend Control Centre:

1. States can set up their own dedicated Backend Control Centre, meeting the above listed mandatory provisions and any other optional features as they may decide.
2. States can allow telecom service providers to offer Backend Control Centre as a Value Added Service (VAS) to the permit holders, meeting the above listed mandatory provisions and any other optional features as they may decide. In this case, the telecom service providers shall provide access to the Backend Control Centre to government officials, as decided by the respective state.

**ANNEXURE A:**  
**INFORMATION TO BE SUBMITTED FOR TYPE APPROVAL**

**1.0 VLT SYSTEM DETAILS**

- a. Make
- b. Type
- c. Model No.
- d. Part No.
- e. Installation layout: Attach drawing showing location in vehicle.

**2.0 VEHICLE LOCATION TRACKING AND EMERGENCY BUTTONS**

- a. Make
- b. Model No.
- c. Part No.
- d. Connector used
- e. Connector used for antennas
  - e.1. main GSM antenna
  - e.2. GPS antenna
  - e.3. WLAN antenna

**3.0 SYSTEM SOFTWARE**

- a. Make
- b. Version
- c. Operating System Details with Version

**4.0 COMMUNICATION PROTOCOL USED**

- a. Vehicle to Center
  - VLT to Control Center
  - Command Set for Configurations

**5.0 DESCRIPTION OF DEVICE**

**6.0 DRAWINGS**

- 6.1 Device/System Drawing.
- 6.2 Vehicle installation Drawing.

**7.0 INSTRUCTIONS MANUAL**

**ANNEXURE B:****CRITERIA FOR EXTENSION OF TYPE APPROVAL**

**B1.0** In case of following changes, Functional, Performance, Durability and Environmental Tests which are necessary for establishing compliance are listed below

	<b>Changes in System</b>	<b>Tests to be conducted</b>
B1.1	Change in Make, Model, Type, accompanied with or without a Part No of Vehicle Location Tracking (VLT) and Vehicle Health Monitoring.	Applicable tests as per Section 6 and Functional verification at system integration level or component level as applicable.
B1.2	Change in onboard layout of ITS component or complete system	Verification at system integration level along with target vehicle
B1.3	Change in software of ITS System	Functional verification at system integration level.
B1.4	Change in wiring harness and connectors	Connector requirements specified in this standard.

## ANNEXURE C:

### PHYSICAL INTERFACES (CONNECTORS) FOR POWER AND I/Os

The below section is for new vehicles and not for the retro-fitment of ITS systems on in-use vehicles.

Device/System side connector/s shall be as per the equipment manufacturer by in case of retro fitment in aftermarket.

Provisions for Power connectors and Power supply to be made by Manufacturers in case of OE fitment & Dealer / Permit holder in case of retro fitment of systems outside vehicle manufacturer facility.

These requirements do not apply to integrated systems with vehicle where integration is done by vehicle manufacturer and /or System Integrator.

#### 1.0 Vehicle Side Connectors

The vehicles shall be equipped with connectors with appropriate fuse protection for interfacing systems implements the functions

Power for physical systems are supplied by vehicle battery which supplies power to all electrical system in the vehicle.

When the engine is running, the vehicle battery is in charge and the systems shall consume normal power needs. But when the engine is turned off, the power consumption by systems shall be limited by means of sleep modes or auto shut off.

Considering the power requirements for equipment packages, the systems are grouped as

ITS System Classification	Max Power	Typical Systems / Packages
Low Power Systems	Up to 120 W	VLT with Emergency Button

The power interface shall have

- One common GROUND linked to vehicle chassis - GND
- One permanent power line (12/24V) linked to the battery after Manual Switch – B+
- One non-permanent power line (12/24V) linked to the battery after Main Switch – SW+

#### 1.1 Minimum Connector Requirements

The minimum connector requirements are formulated as following.

Sl. No.	Recommended Electrical Provisions	Max Power	Applicable ITS Systems	Minimum Requirement	Recommended Connector
1.	Low Power System 1 (Mandatory Provision)	Up to 120 W	Telematics Device/VLT System with Emergency Button	B+, SW+, GND	OEM to protect ISO 15170-B1-3.1-Sn/K1 Socket (Female) Connector

The OEM may provide optional auxiliary connectors of their choice for meeting other functional requirements.

## 1.2 Connector labeling in Wiring Harness:

Vehicle side wiring shall have the following labeling for the connectors

Recommended Electrical Provisions	Labeling Requirement
Low Power System 1 (Mandatory Provision)	ITS 120 W
Low Power System 2 (Mandatory Provision)	ITS 120 W
High Power System 1 (Mandatory Provision)	ITS 360 W
CAN Interface (OBDII CAN) (Mandatory Provision)	ITS CAN

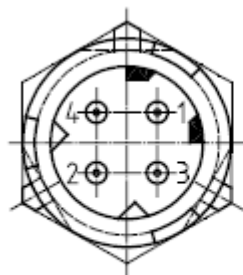
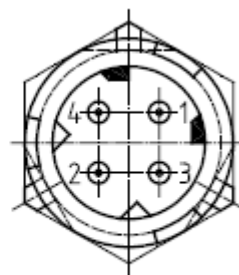
## 1.3 Connector Cavity/PIN Assignment

**Power Connector: ISO 15170-B1-3.1-Sn/K1, ISO 15170-B2-3.1-Sn/K1**

Pin 1	B+
Pin 2	SW+
Pin 3	GND

**CAN Connector: ISO 15170-B1-4.1-Sn/K1**

Pin 1	CAN High
Pin 2	CAN Low
Pin 3	Option CAN Ground
Pin 4	Not used

**a) Code 1 — Colour: black (BK)****b) Code 2 — Colour: grey (GY)**

## **2.0 Device/System connectors**

Device/System side connector/s shall be pre-agreed with equipment manufacturer by

1. Vehicle OEM in the case of OE fitment of the systems
2. Permit holder or Dealer in case of retro fitment of systems outside vehicle manufacturer facility

**ANNEXURE D:**  
(See Introduction)  
**COMPOSITION OF AISC PANEL \***

<b>Name</b>	<b>Organization</b>
<b>Convener</b>	
Mr. Rakesh Jain	Delhi Integrated Multi-Modal Transit System Ltd. (DIMTS)
<b>Members</b>	<b>Representing</b>
Mr. Prashant Tiwari /Shri Alok Sethi	Delhi Integrated Multi-Modal Transit System Ltd. (DIMTS)
Mr. A. A. Deshpande/ Mr. M. M. Desai / Mr. K. B. Patil	The Automotive Research Association of India (ARAI)
Director / Mr. Samir Sattigeri /Shri M. M. Pathak	Central Institute of Road Transport (CIRT)
Mr. G. R. M. Rao	Vehicle Research & Dev. Estt. (VRDE)
Dr. Madhusudan Joshi	International Centre for Automotive Technology (ICAT)
Mr. K. K. Gandhi	SIAM
Mr. S. Ravishankar/ Mr. D. Balakrishnan/Ms. Suchismita Chatterjee	Ashok Leyland Technical Centre (SIAM)
Mr. Girish Kodolikor	Force Motors Ltd. (SIAM)
Mr. Sanjay Tank	Mahindra and Mahindra Ltd. (SIAM)
Mr. Shrikant V. Joshi / Mr. P S Gowrishankar, / Mr. Sharad S. Bhole	Tata Motors Ltd. (SIAM)
Mr. Suchindran M	Toyota Kirloskar Motor Pvt. Ltd. (SIAM)
Mr. Jitendra Malhotra/ Mr. Sumit Sharma/ Mr. Raj Kumar Diwedi	Maruti Suzuki India Ltd.(SIAM)
Mr. RajendraKhile/Mr Karuppasamy	Renault Nissan Technology and Business Centre (SIAM)
Mr. S Ramiah	TVS Motor Company Ltd. (SIAM)
Mr. Arun Sivasubrahmaniyan	Hero Motocorp Ltd. (SIAM)
Mr. R. Narasimhan	Bajaj Auto Ltd. (SIAM)
Mr. Uday Harite	ACMA
Mr. Raju Agarwal / Mr. Rahul Jain	Castmaster Mobitec India Pvt Ltd.
Mr. Vishwajit Joshi	KPIT Cummins Infosystems Ltd

\* At the time of approval of this Automotive Industry Standard (AIS)

**ANNEXURE E****(See Introduction)**

**COMMITTEE COMPOSITION \***  
**Automotive Industry Standards Committee**

<b>Chairperson</b>	
Mrs. Rashmi Urdhwareshe	Director The Automotive Research Association of India, Pune
<b>Members</b>	<b>Representing</b>
Shri Priyank Bharti	Ministry of Road Transport and Highways (Dept. of Road Transport and Highways), New Delhi
Representative from	Ministry of Heavy Industries and Public Enterprises (Department of Heavy Industry), New Delhi
Shri S. M. Ahuja	Office of the Development Commissioner, MSME, Ministry of Micro, Small and Medium Enterprises, New Delhi
Shri Shrikant R. Marathe	Former Chairman, AISC
Shri R.R. Singh	Bureau of Indian Standards, New Delhi
Director	Central Institute of Road Transport, Pune
Director	Indian Institute of Petroleum, Dehra Dun
Director	Vehicles Research and Development Establishment, Ahmednagar
Director	International Centre for Automotive Technology
Director	Global Automotive Research Centre
Director	Indian Rubber Manufacturers Research Association
Representatives from	Society of Indian Automobile Manufacturers
Shri T. R. Kesavan	Tractor Manufacturers Association, New Delhi
Shri Uday Harite	Automotive Components Manufacturers Association of India, New Delhi

Member Secretary

Shri Vikram Tandon

Dy. General Manager

The Automotive Research Association of India, Pune

\* At the time of approval of this Automotive Industry Standard (AIS)