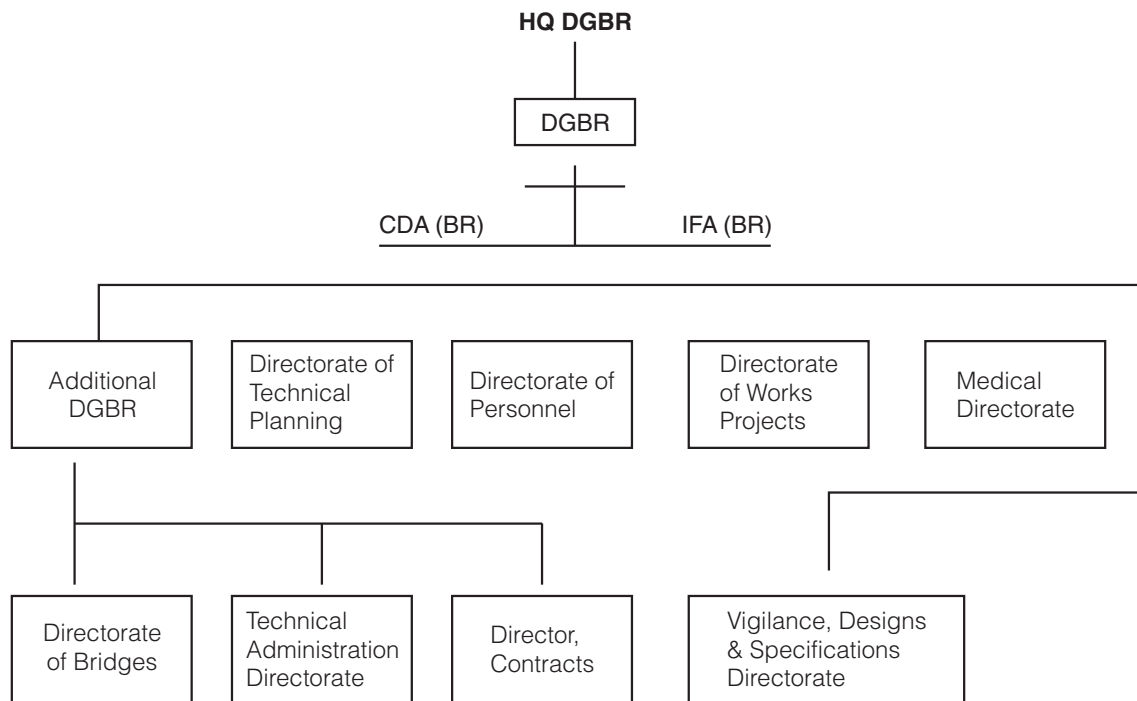


APPENDIX-V



Ministry of Road Transport & Highways
Government of India

Note : Each Directorate is headed by a Brigadier/Chief Engineer level rank GREF officer except for Director, Contracts, which is headed by a Senior Surveyor of Works from the Military Engineering Services (MES) Cadre.

With the introduction of the Integrated Financial Advisory (IFA) system in the BRO in 1995, a sound IFA establishment functions at each level of decision making and execution i.e. the HQ DGBR, HQ CE Project and HQ Task Force. The IFA (BR) was awarded the ISO 9002 certification for the activity of processing and sanctioning work estimates. The Technical Administrative Directorate at the HQ DGBR was also awarded the ISO 9002 covering the process of procurement of plant, vehicles and equipment.

Contd....

BYPASSES

NH	Section	Length (Km)
<u>Northern and Western Sector</u>		
1	Patiala	19.07 Km
2	Patiala (Northern)	12.92 Km
3	Batala	6.34 Km
4	Gurdaspur (Western)	5.226 Km
5	Sangrur	18.99 Km
6	Rohtak (Southern)	24.50 Km
7	Sonipat	8.70 Km
8	Jodhpur	43.60 Km
9	Jaisalmer	92.60 Km
10	Sanchor	23.53 Km
11	Ganganagar	23.71 Km
12	Hanumangarh Bypass rehabilitation works	10.70 Km
13	Udhampur	17.70 Km
14	Ramban	5.14 Km
15	Batote (Strengthening works)	1.70 Km
16	Nashri (Strengthening works)	17.92 Km
17	Woyil	33.41 Km
18	Sopore	5.00 Km
19	Baramula	1.40 Km
20	Kannabal	5.00 Km
21	Nagrota	14.16 Km
22	Kargil Town	12.50 Km
23	Rudraprayag Phase I	3.90 Km
24	Rudraprayag Phase II	9.50 Km
25	Bhadra (Only Maint.)	4.60 Km
26	Sangria (Only maint.)	6.37 Km
27	Suratgarh (Only maint.)	4.30 Km
<u>Eastern Sector</u>		
1	Agartala Bypass	13.58 Km
2	Karimganj Bypass	3.84 Km
3	Silchar Bypass	20.10 Km
4	Sonapur Slide	9.46 Km

(Figures in brackets indicate the year of the PM's Package under which the development/upgradation was included)



Ministry of Road
Transport & Highways
Government of India

ANNUAL REPORT
2003-2004

