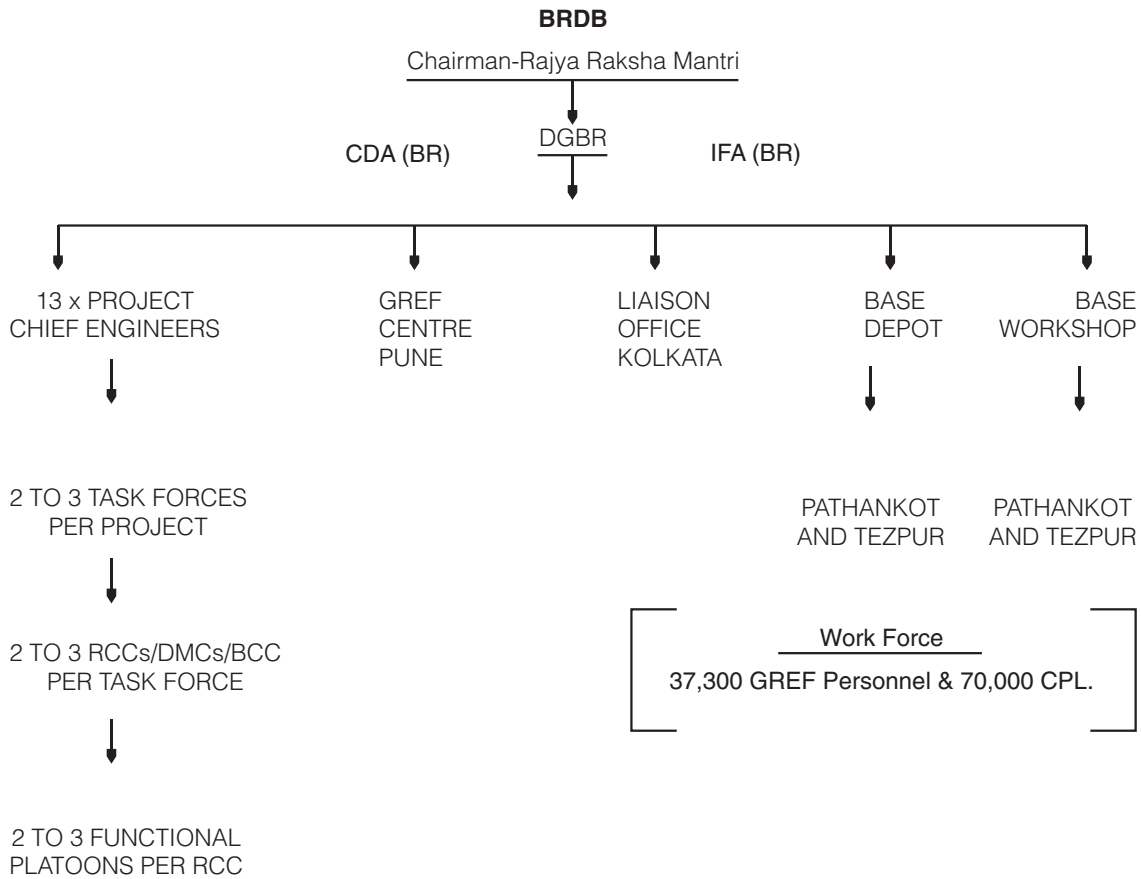


APPENDIX-IV



- | | |
|-------|-------------------------------|
| RCC - | Road Construction Company |
| DMC - | Drain Maintenance Company |
| BCC - | Bridge Construction Company |
| CDA - | Controller of Defence Account |
| IFA - | Integrated Financial Adviser |
| CPL - | Casual Paid Labour |

A Project is headed by a Brigadier from the corps of Engineers or a GREF Officer of the rank of Chief Engineer (CE), a Task Force by a Colonel or Superintending Engineer (Civil), a RCC by a Major or an Executive Engineer (Civil) and Functional Platoons by a Captain or an Assistant Executive Engineer.



Ministry of Road Transport & Highways
Government of India

